



## **W A R N I N G**

### **TOYOTA LANDCRUSIER 300 SERIES HEAT EXCHANGER UPGRADE**

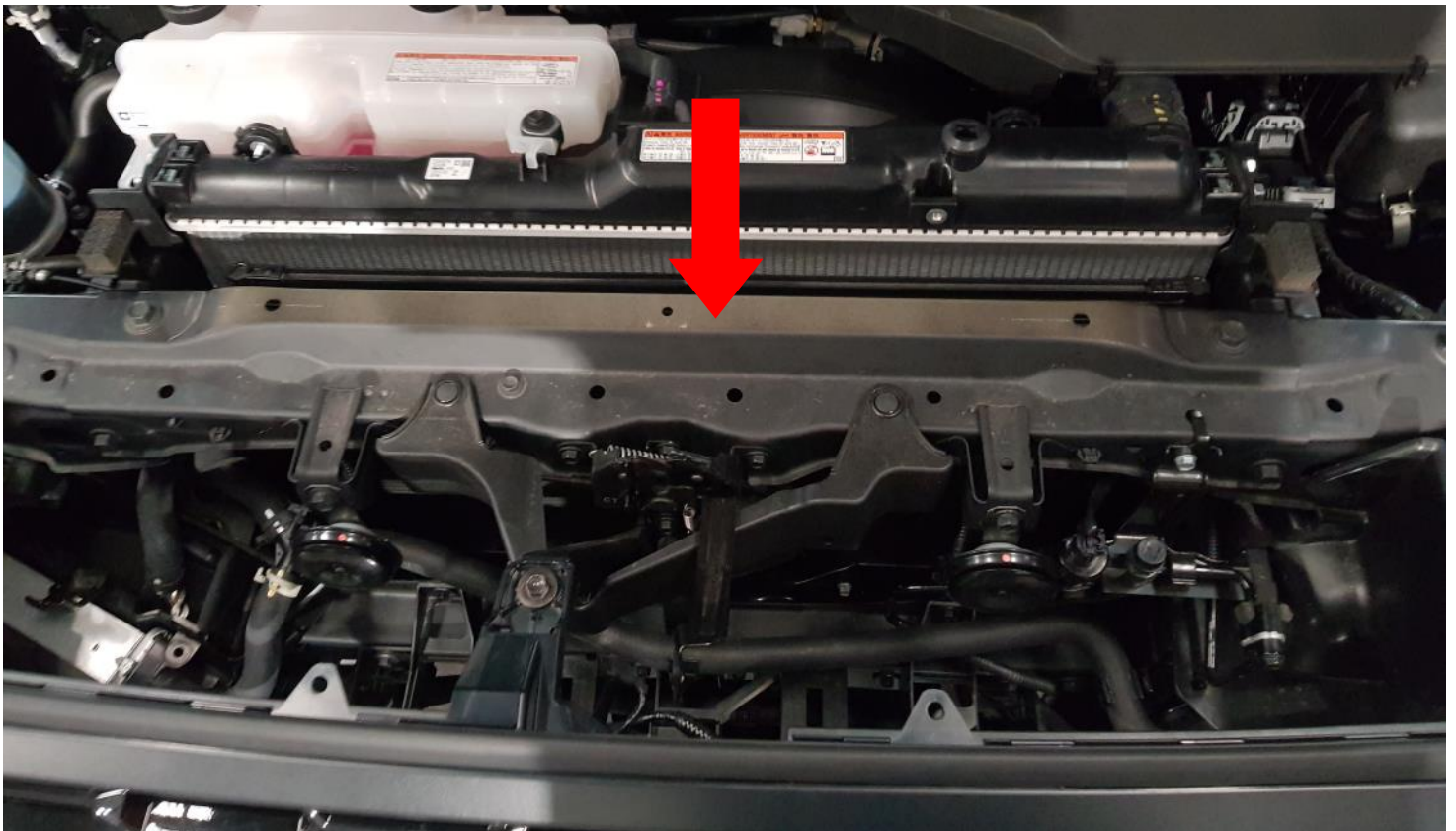
WARNING: Failure to follow this procedure will void your warranty.

- Do not use this product in any other motor vehicle for which it is not designed.
- Do not use any other mounting location / method other than described in this instruction.
- It is advisable to seek assistance of another person when installing this product.
- Do not repair or modify this product and / or its mounting bracket in any way - repair or modification may affect proper operation of the vehicle or cause destruction of property.
- Be sure to clean and remove any loose debris before removing pipe work as debris entering the engine could be detrimental to the engine and or components

REMOVE PLASTIC COVER.

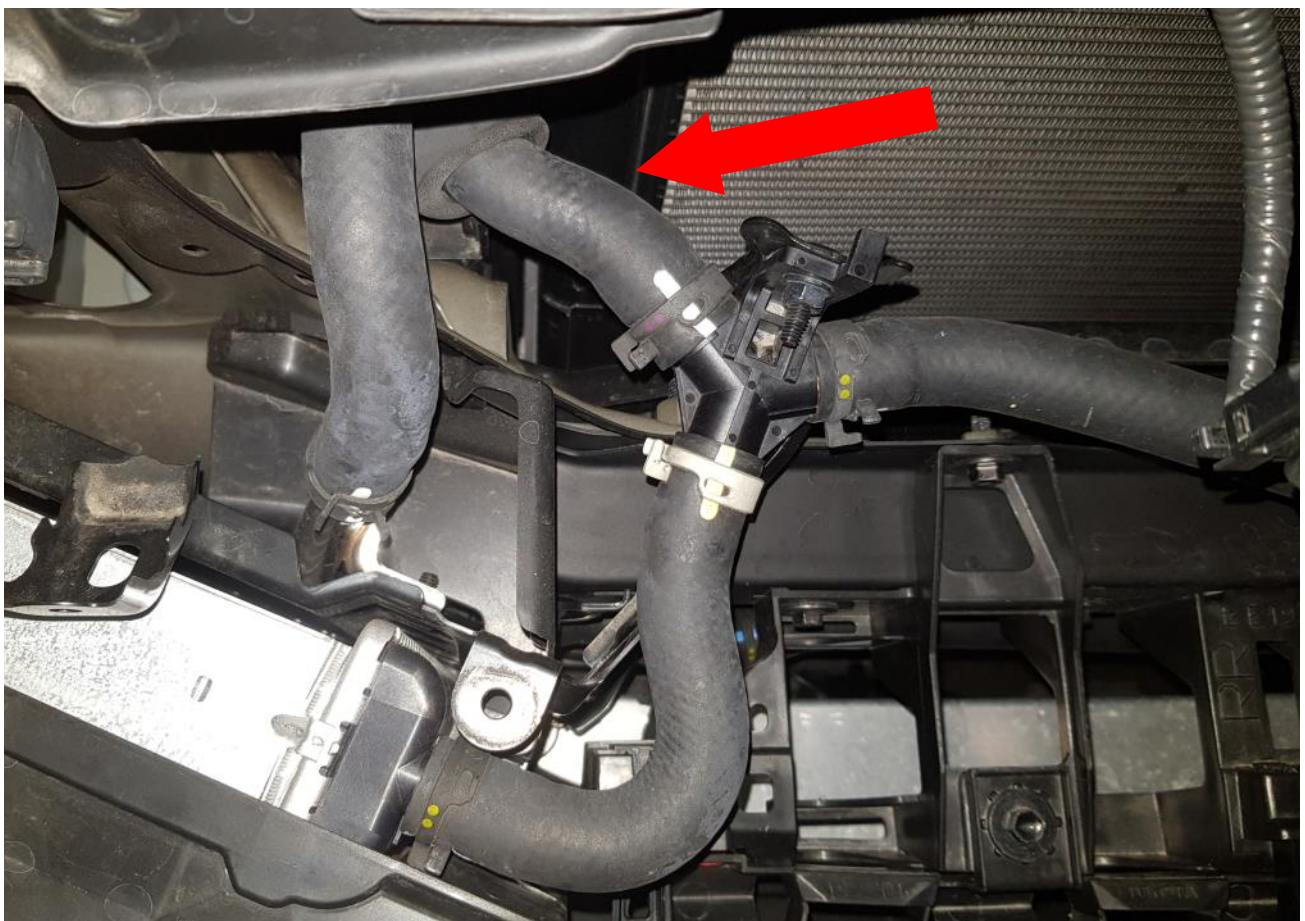


REMOVE PLASTIC COVER OVER BONNET LATCH. MARK POSITION AND UN BOLT ALONG WITH SUPPORT BRACKET. UN PLUG FANS AND UNPICK THE WIRING LOOM RUNNING UNDER THE RADIATOR SUPPORT PANEL. UN BOLT AC PIPE SUPPORT BRACKET AND REMOVE CENTRE RADIATOR SUPPORT PANEL.

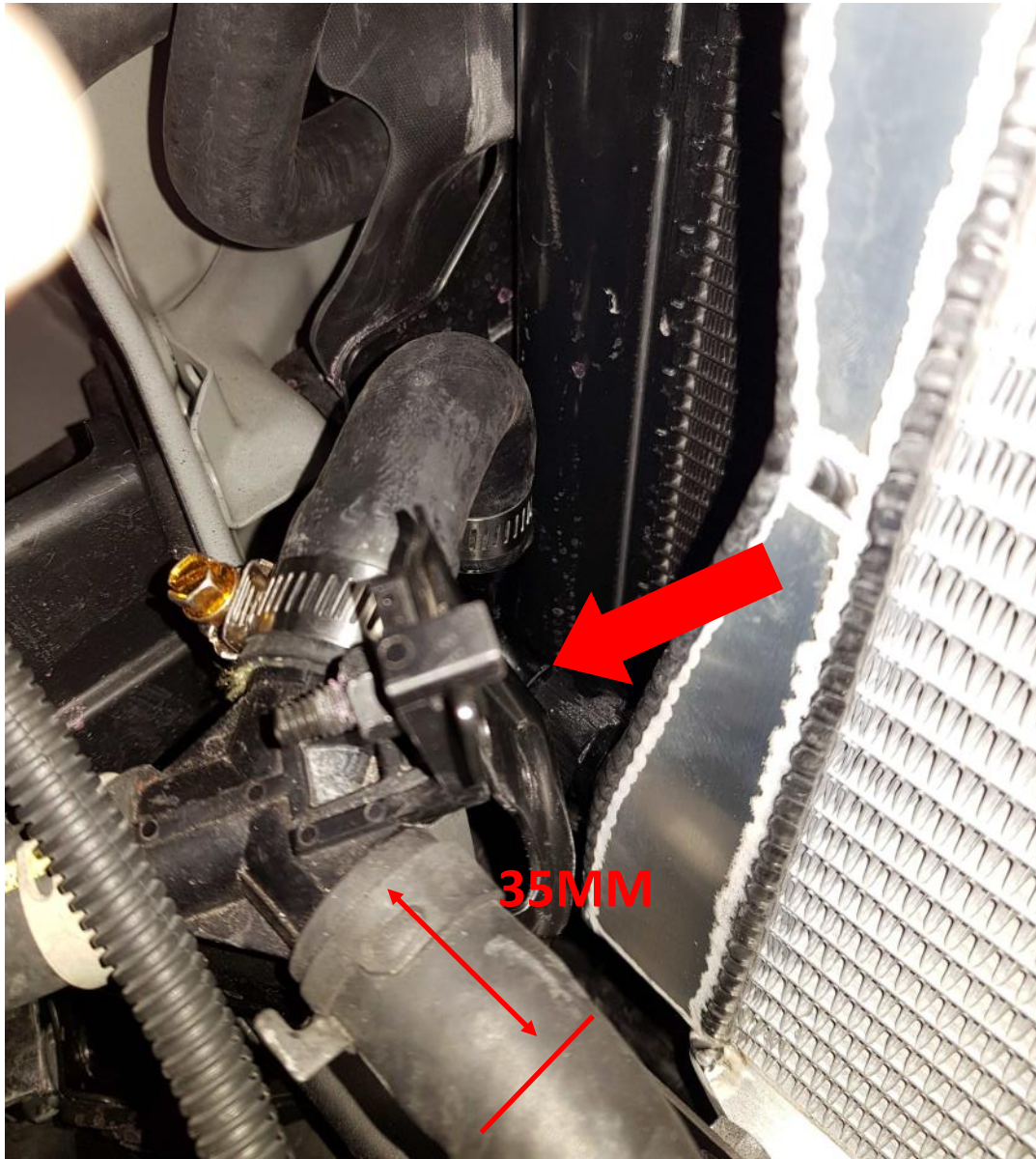




CLAMP HOSES SHOWN TO REDUCE THE LOSS OF COOLANT AND REMOVE LOWER HOSE JOINING THE INTAKE TO THE Y PIECE SHOWN.

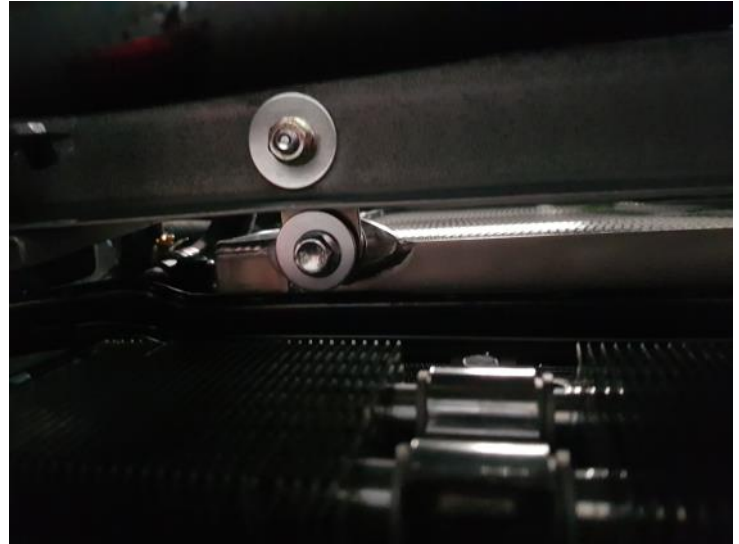
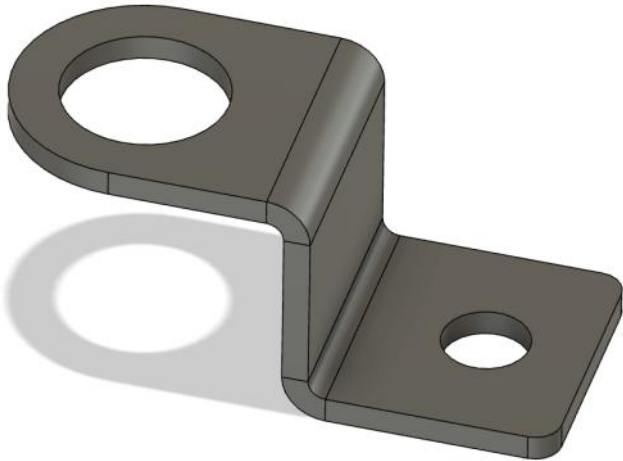


GENTLY BEND THE SUPPORT BRACKET FOR THE Y PIECE TOWARD THE FRONT OF THE VEHICLE LIKE SHOWN. SHORTEN THE LONG HOSE GOING TO THE PASSANGER SIDE HEAT EXCHANGER BY 35MM AND RE INSTALL.



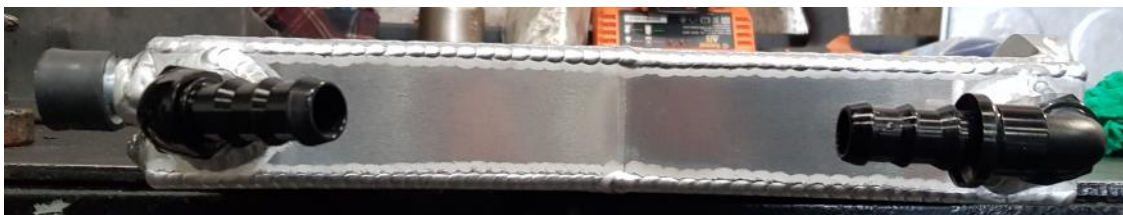


INSTALL THE LOWER MOUNTING BRACKETS TO THE LOWER CROSSBAR LIKE SHOWN USING THE M8X16 BOLT AND NUT. LEAVE FINGER TIGHT.



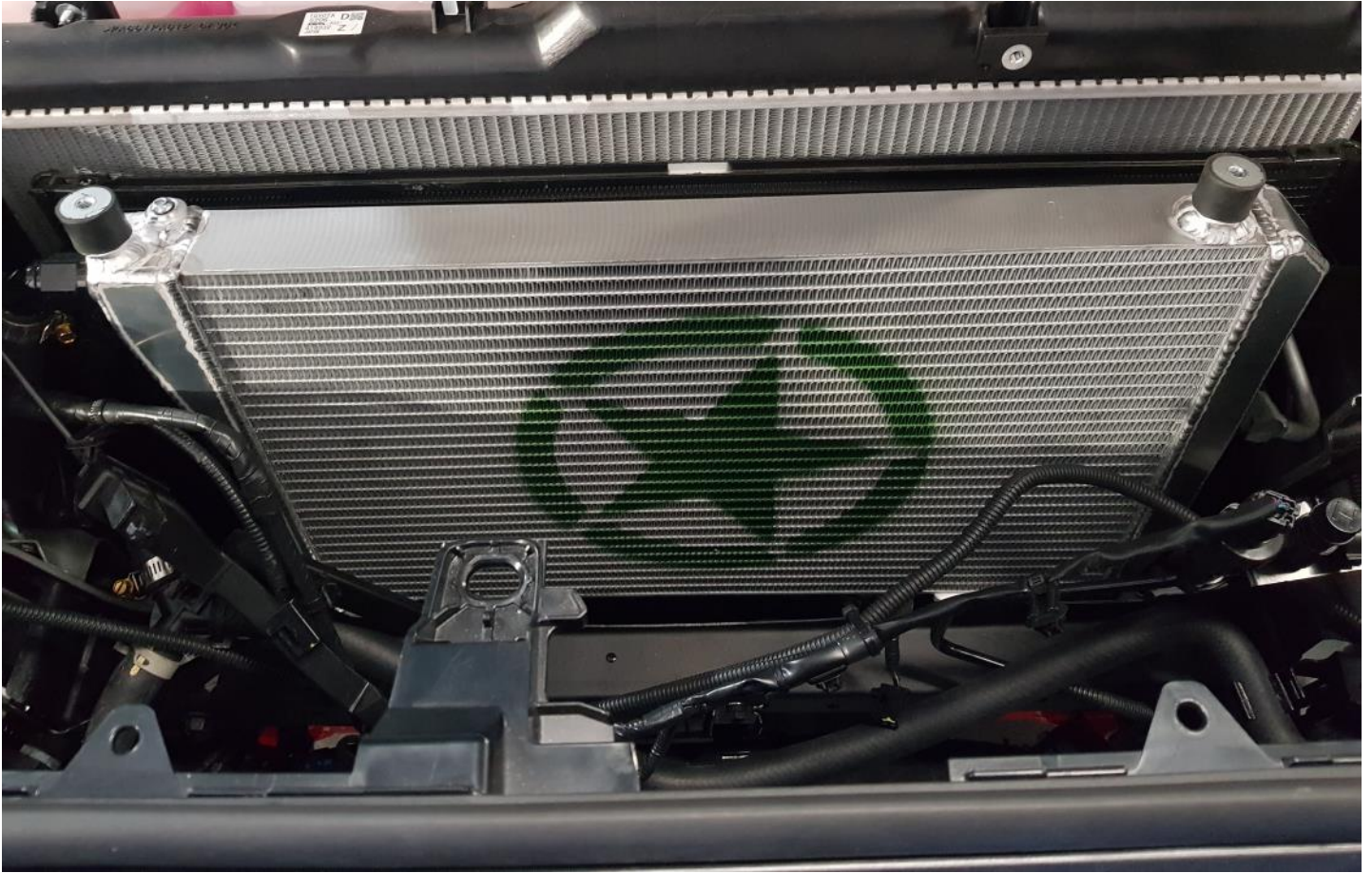
INSTALL THE TWO FITTINGS SUPPLIED LIKE SHOWN 60 DEGREE TO THE TOP AND THE 90 DEGREE TO THE BOTTOM.

60  
DEG

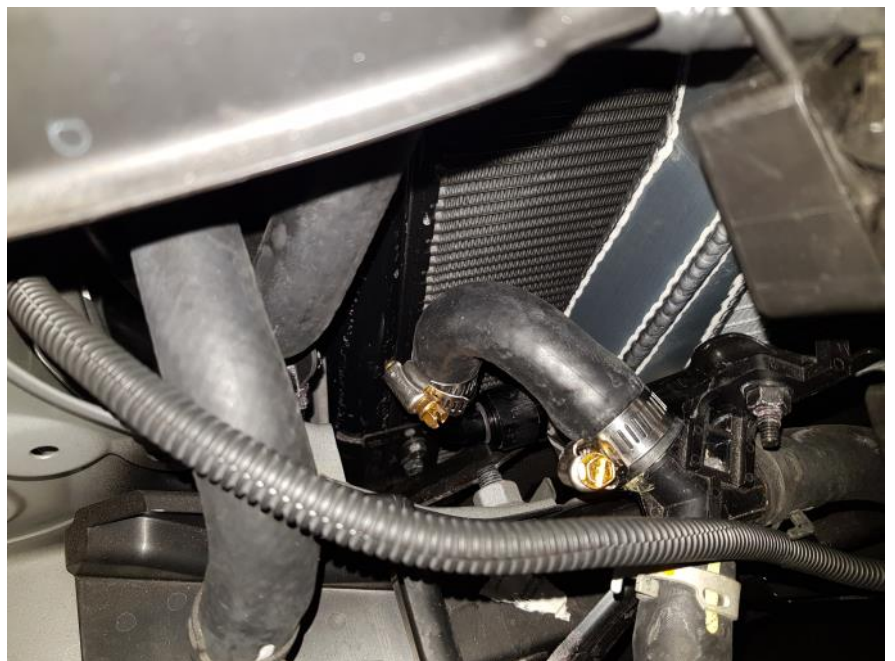


90  
DEG

INSTALL THE MOUNTING RUBBERS TO THE TOP OF THE HEAT EXCHANGER AND INSTALL THE HEAT EXCHANGER USING THE M8X20 BOLTS SUPPLIED TO THE LOWER BRACKETS. CHECK CLEARANCE TO VEHICLE, TEST FIT RADIATOR SUPPORT PANEL, ADJUST ACCORDINGLY AND TIGHTEN LOWER BOLTS. REMOVE RADIATOR SUPPORT PANEL.



INSTALL LOWER HOSE WITH SHORT END TO HEAT EXCHANGER WITH HOSE CLAMPS SUPPLIED.

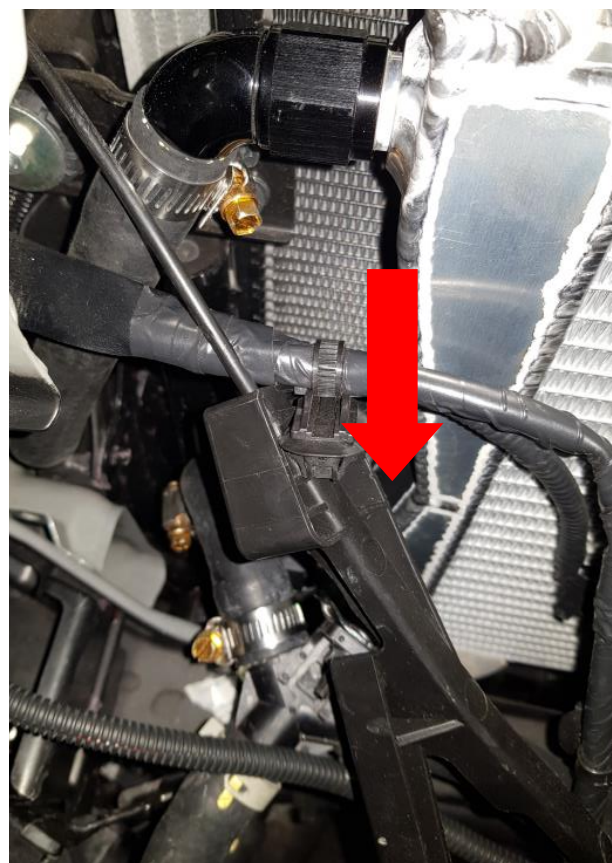




INSTALL TOP HOSE WITH SHORT SIDE TO HEAT EXCHANGER USING HOSE CLAMPS SUPPLIED.  
OPEN DRAIN VALVE ON THE REAR OF THE HEAT EXCHANGER AND ADD COOLANT TO THE COOLANT RESERVIOR UNTIL COOLANT COMES OUT OF THE BLEED VALVE. (APPROX 2 LITRES). TIGHTEN BLEED VALVE. LET SIT FOR APPROX 15 MIN AND RE CHECK LEVELS.  
REMOVE CLAMPS.

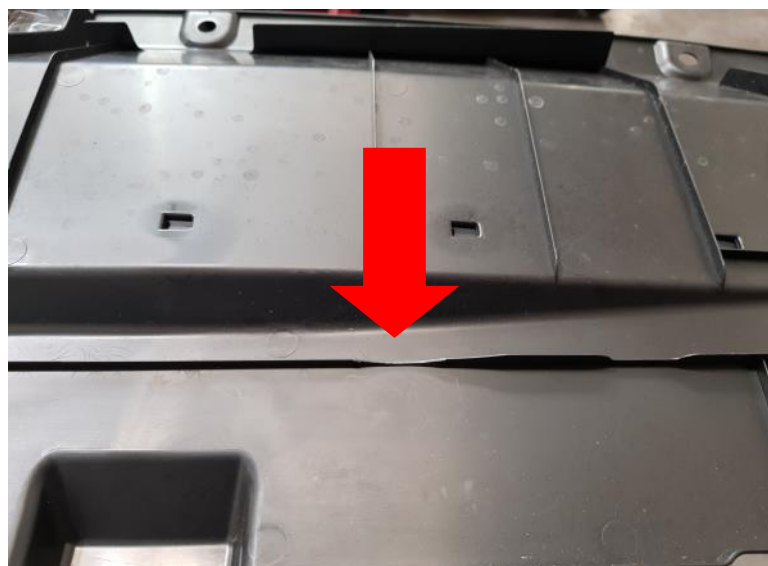
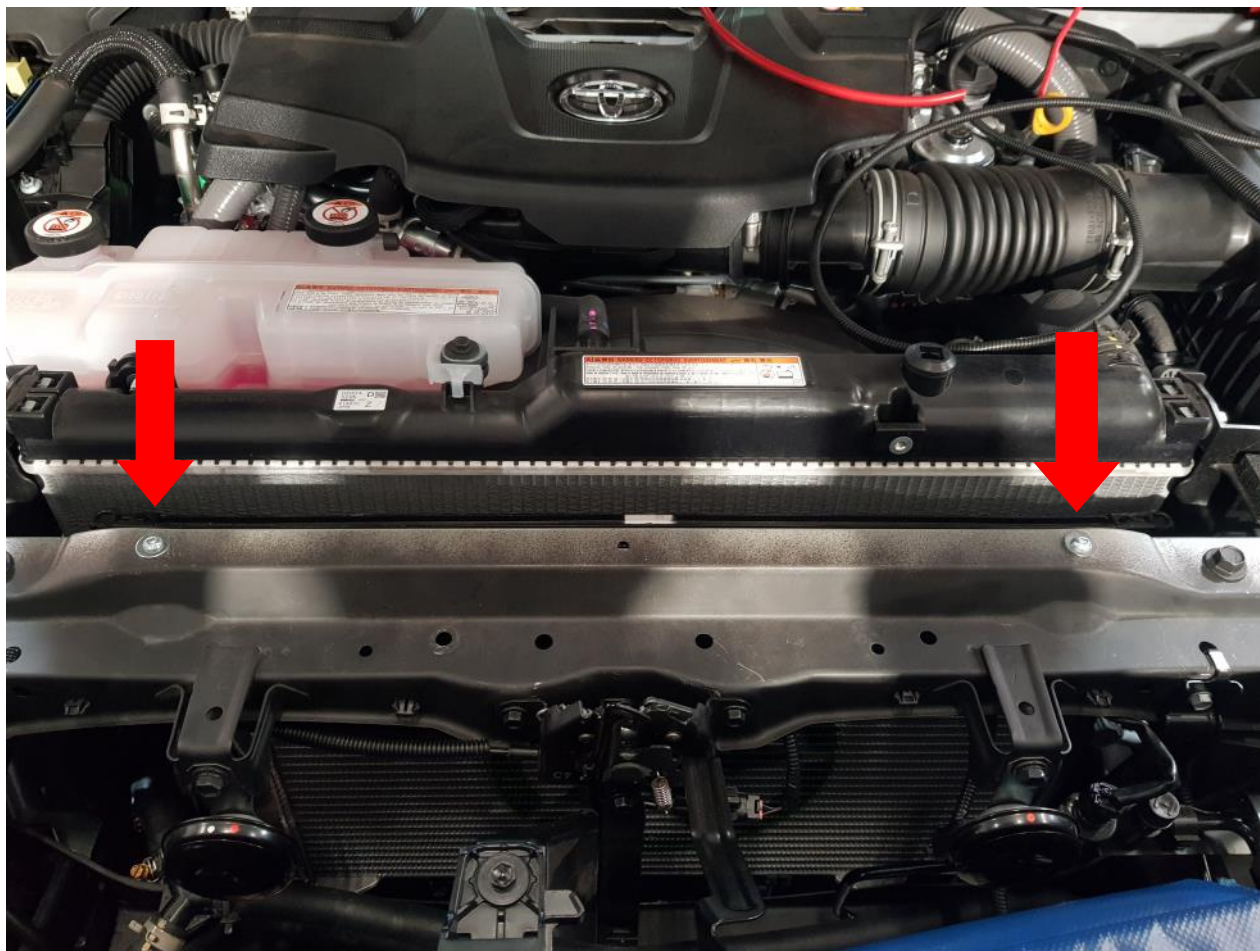


REMOVE THE PLASTIC BONNET RELEASE GUIDE AND SLIDE OVER CONDUIT SUPPLIED.



REINSTALL TOP RADIATOR SUPPORT PANEL ALONG WITH THE SUPPLIED M6X7 ALLEN HEAD BOLTS TO THE TOP RUBBER MOUNTS FOR THE HEAT EXCHANGER.

RE INSTALL ALL PREVIOUSLY REMOVED COMPONENTS. CABLE TIE BONNET RELEASE CABLE TO WIRING LOOM.



ON THE UNDER SIDE OF THE PLASTIC COVER REMOVE MATERIAL LIKE SHOWN TO CLEAR THE ALLEN HEAD BOLTS.

RE INSTALL PLASTIC COVER AND TEST DRIVE VEHICLE.

CHECK COOLENT LEVELS AT REGULAR SERVICE INTERVALS