



TOYOTA LANDCRUISER 76/78/79 SERIES

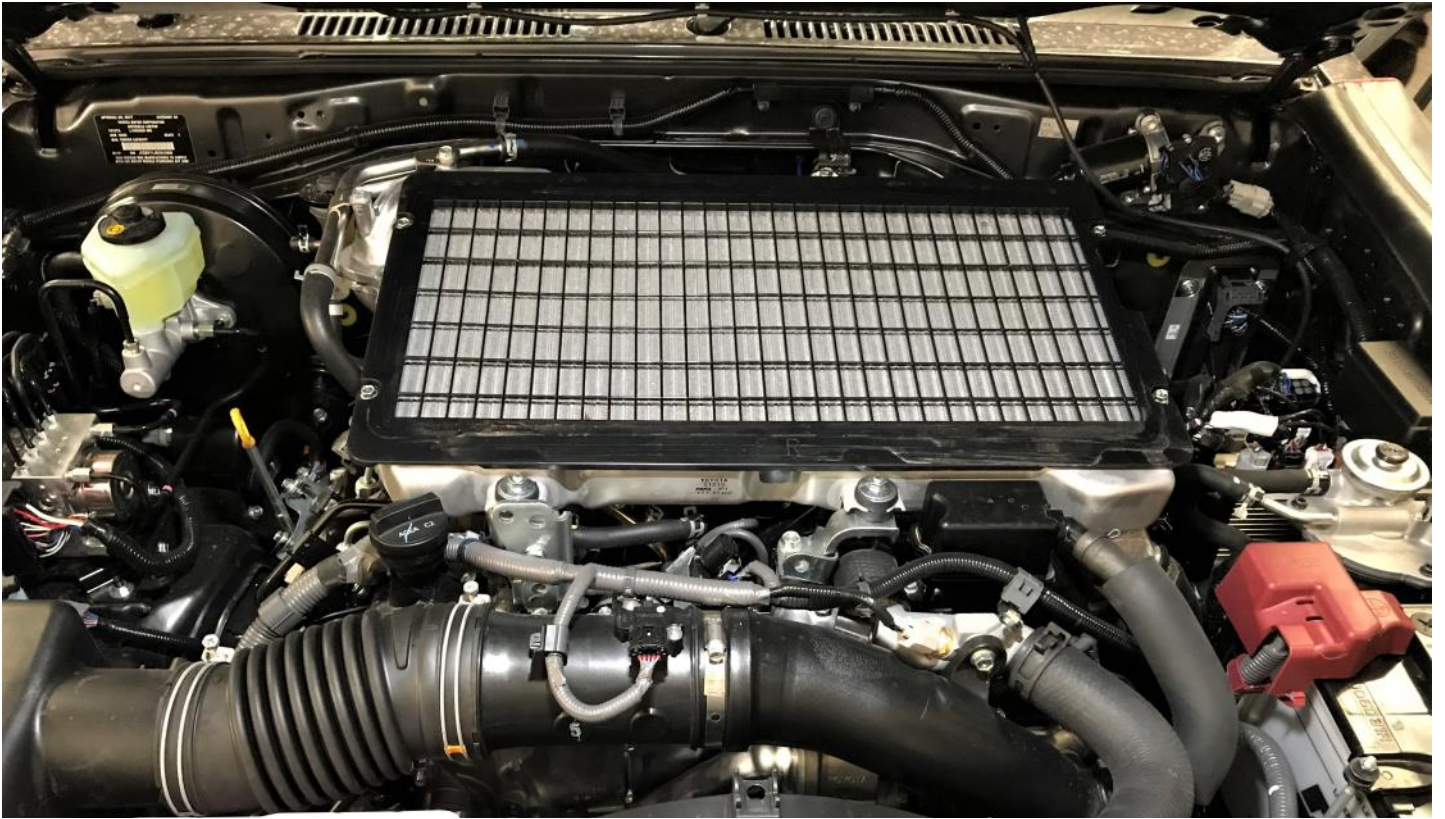
DPF ULTIMATE INTERCOOLER

INSTRUCTIONS

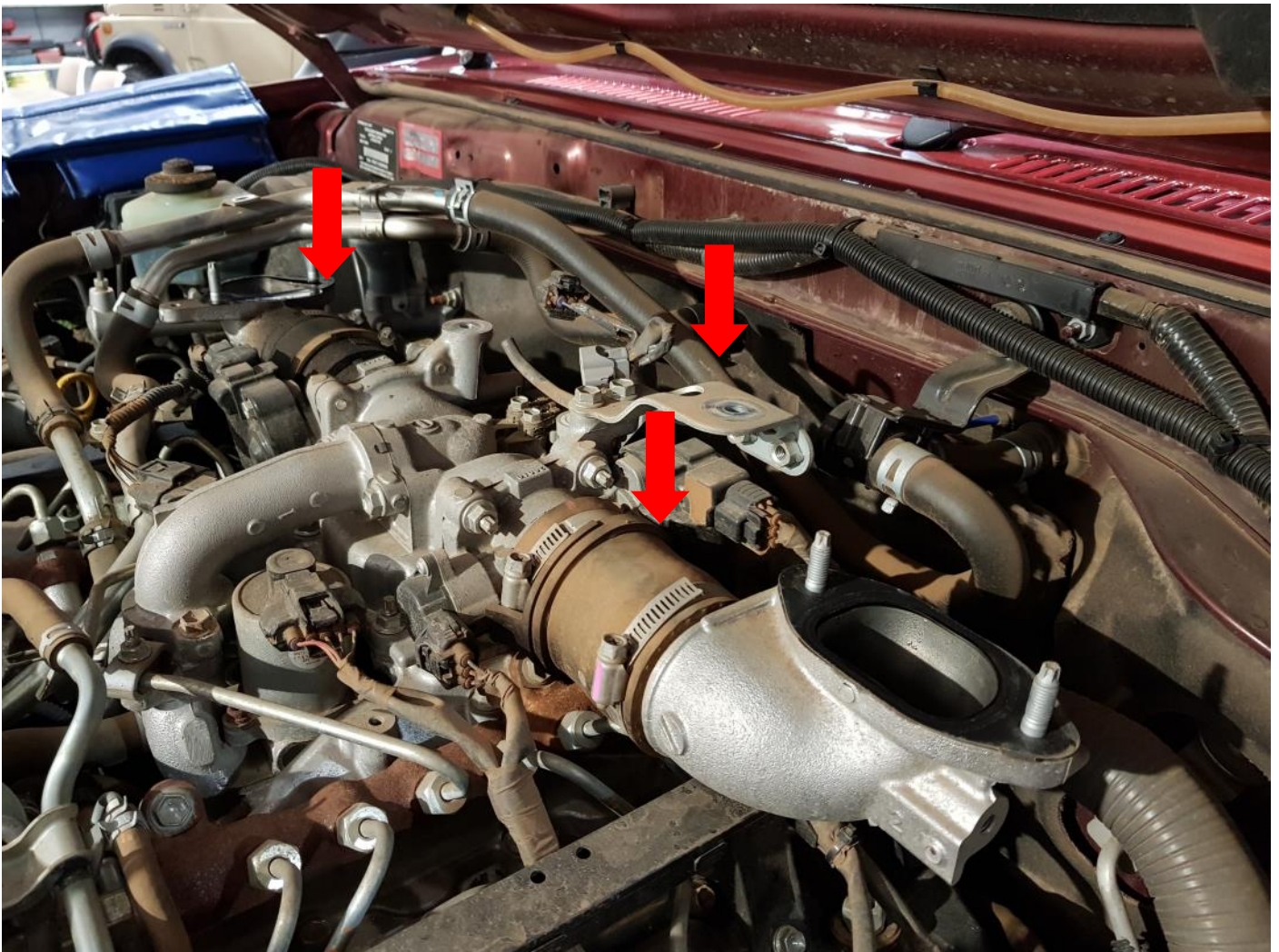
 **W A R N I N G**

WARNING: Failure to follow this procedure will void your warranty.

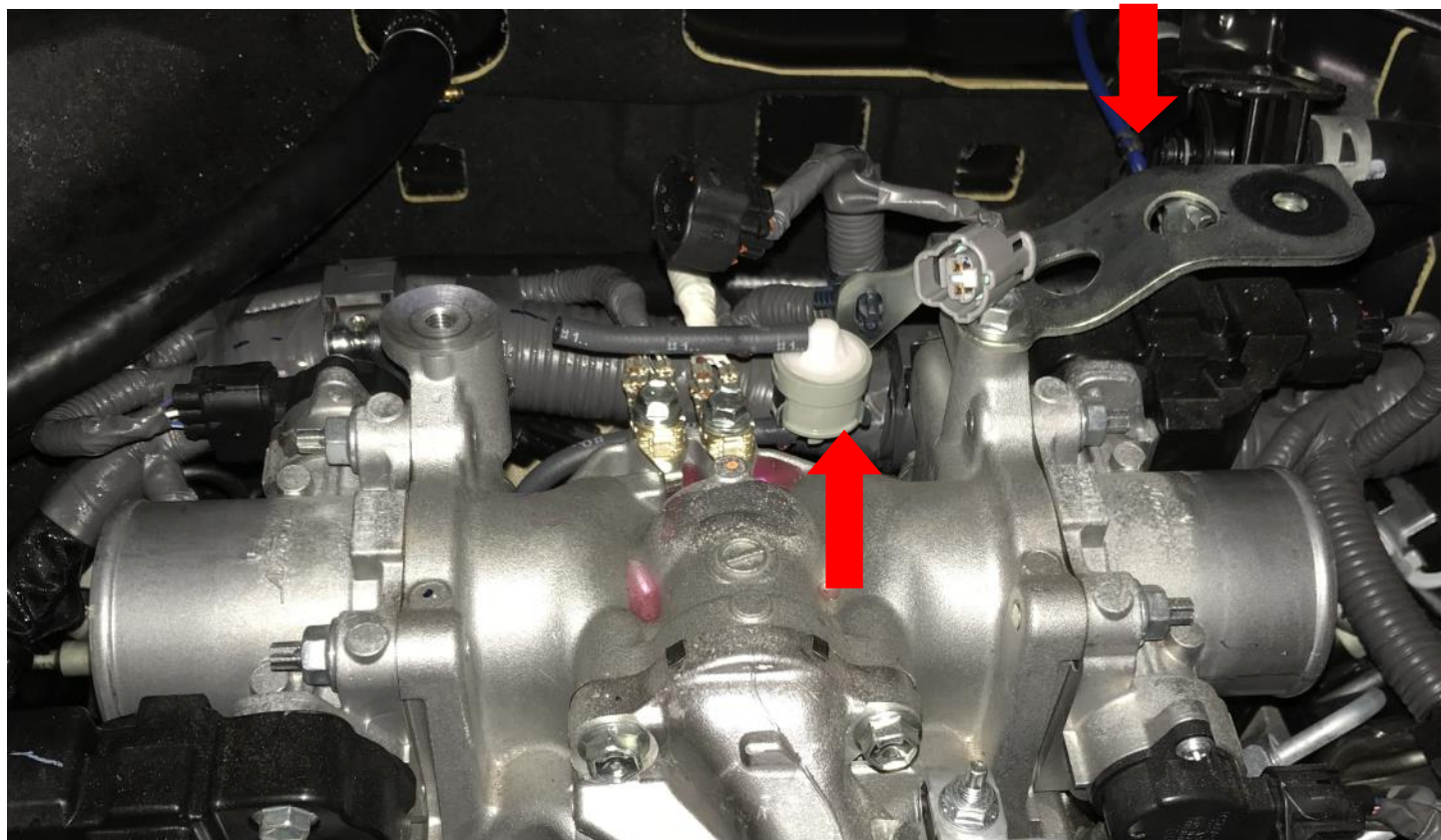
- Do not use this product in any other motor vehicle for which it is not designed.
- Do not use any other mounting location / method other than described in this instruction.
- It is advisable to seek assistance of another person when installing this product.
- Do not repair or modify this product and / or its mounting bracket in any way - repair or modification may affect proper operation of the vehicle or cause destruction of property.
- Be sure to clean and remove any loose debris before removing pipe work as debris entering the engine could be detrimental to the engine and or components



DISCONNECT MAP AND TEMP SENSOR (AT THE REAR OF THE INTERCOOLER). REMOVE FACTORY INTERCOOLER, PIPEWORK TO THE THROTTLE BODIES AND HOSE OFF THE TURBO PIPE.



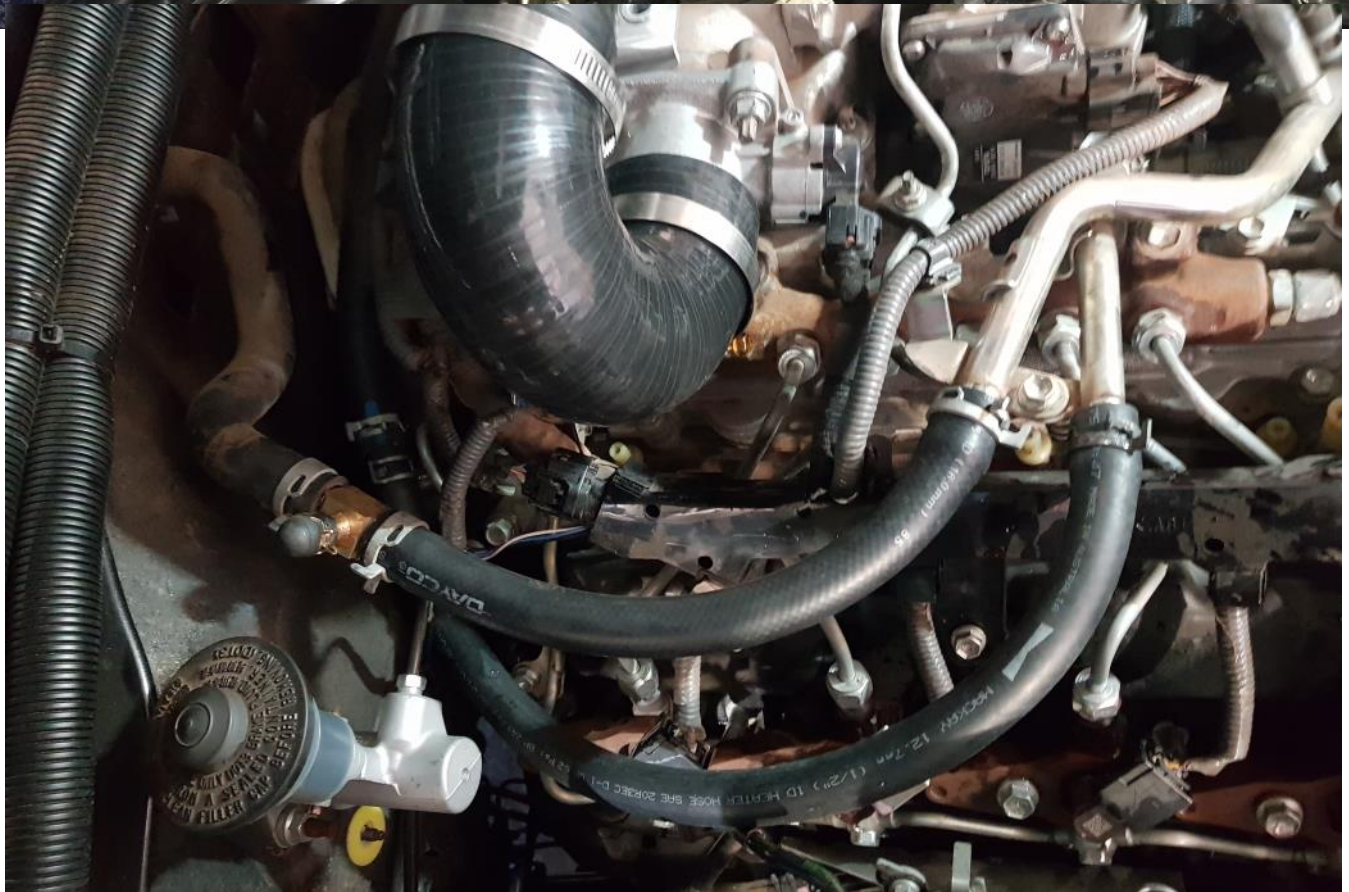
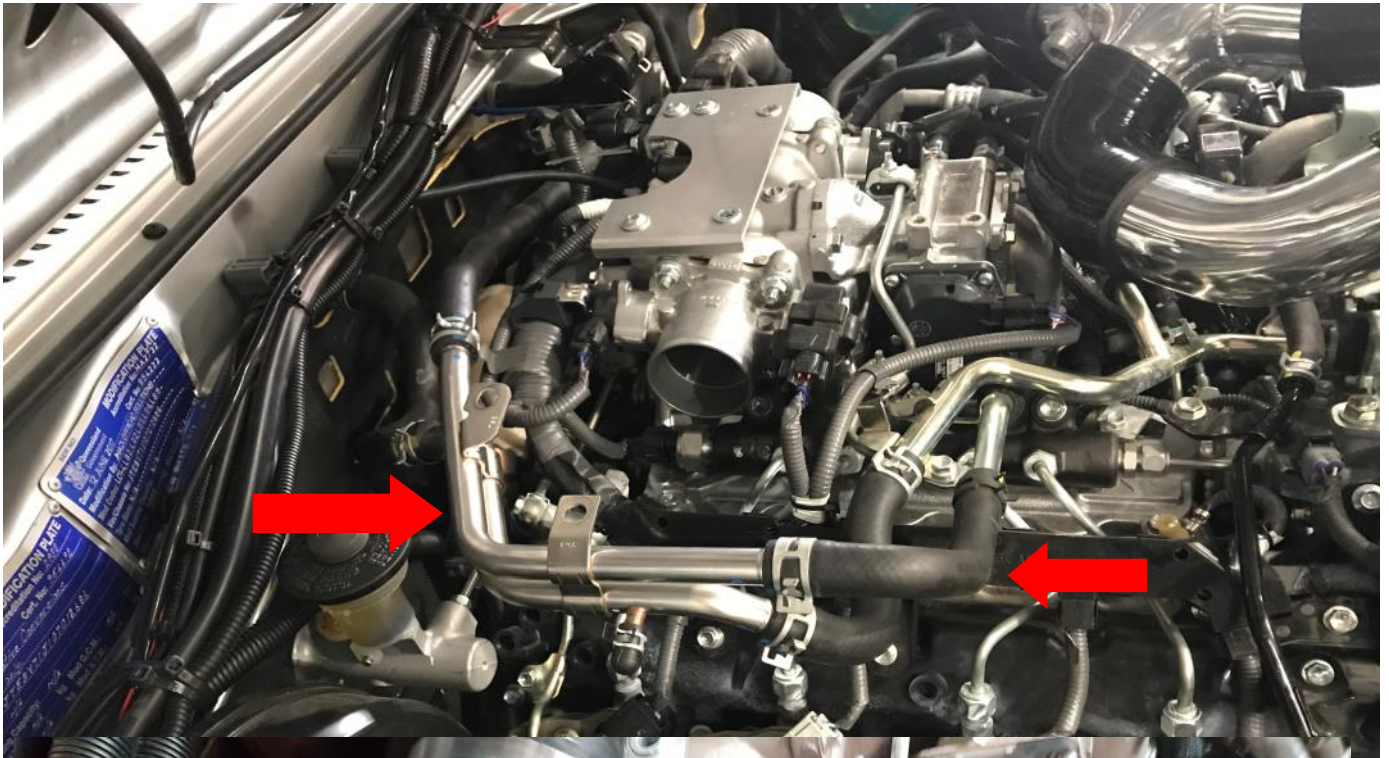
REMOVE MAP SENSOR FILTER AND LOOM FROM THE BRACKET SHOWN AND REMOVE BRACKET.



REMOVE STEEL HEATER LINES AND RUBER HOSES GOING TO THE MOTOR.

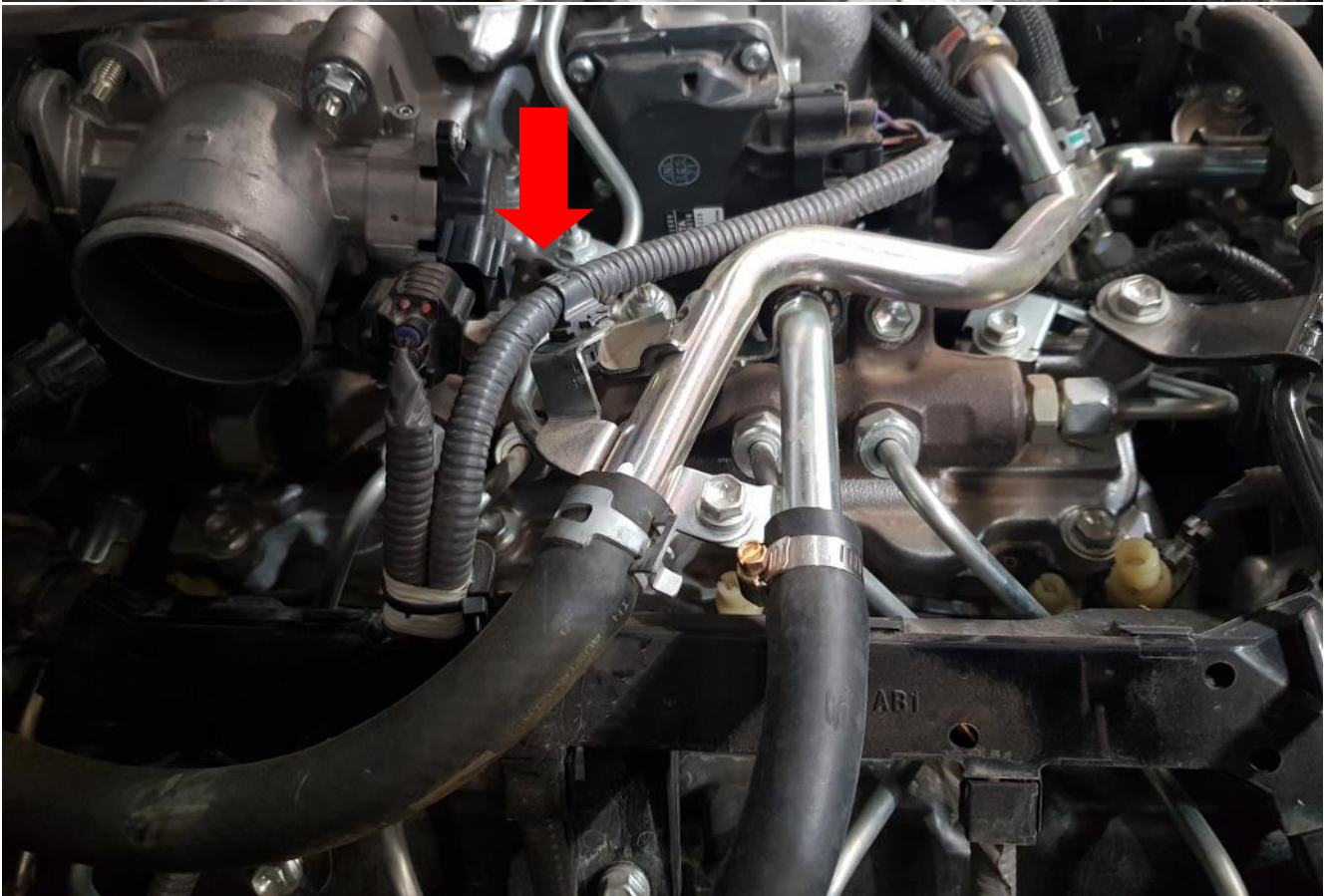
INSTALL HEATER HOSES AS SHOWN BELOW. INSTALL THE BRASS T PIECE INTO THE LINE COMING FROM THE FIREWALL USING SUPPLIED HOSE CLAMPS. REUSE THE FACTORY HOSE BLANK AND SECURE WITH SPRING CLIP SUPPLIED (SEE ABOVE). RUN SUPPLIED 5/8TH HOSE TO MOTOR. INSTALL 1/2-5/8 BRASS JOINER INTO HEATER HOSE RUNNING TO HEATER TAP AND INSTALL 1/2 HOSE AS SHOWN USING SUPPLIED CLAMPS.

WHEN THE INTERCOOLER IS INSTALLED BLEED THE COOLANT SYSTEM AS PER TOYOTA INSTRUCTIONS.

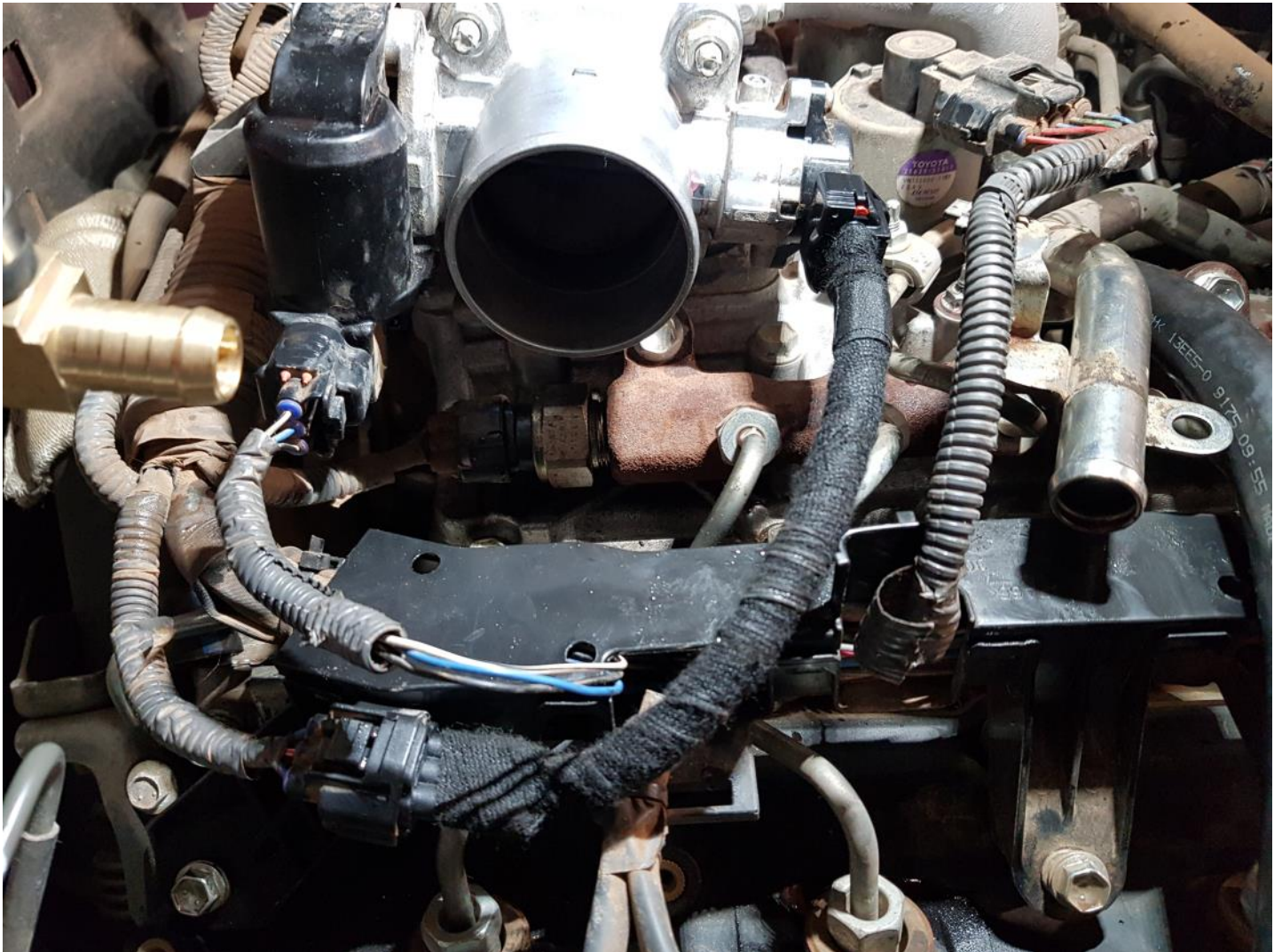


ROTATE THE SPRING CLIPS ON THE EGR COOLER LINES SO THEY ARE FACING SIDWAYS (IF APPLICABLE.)

GENTLY TAP DOWN BRACKET SHOWN FOR ADDED CLEARANCE TO THE INTERCOOLER.

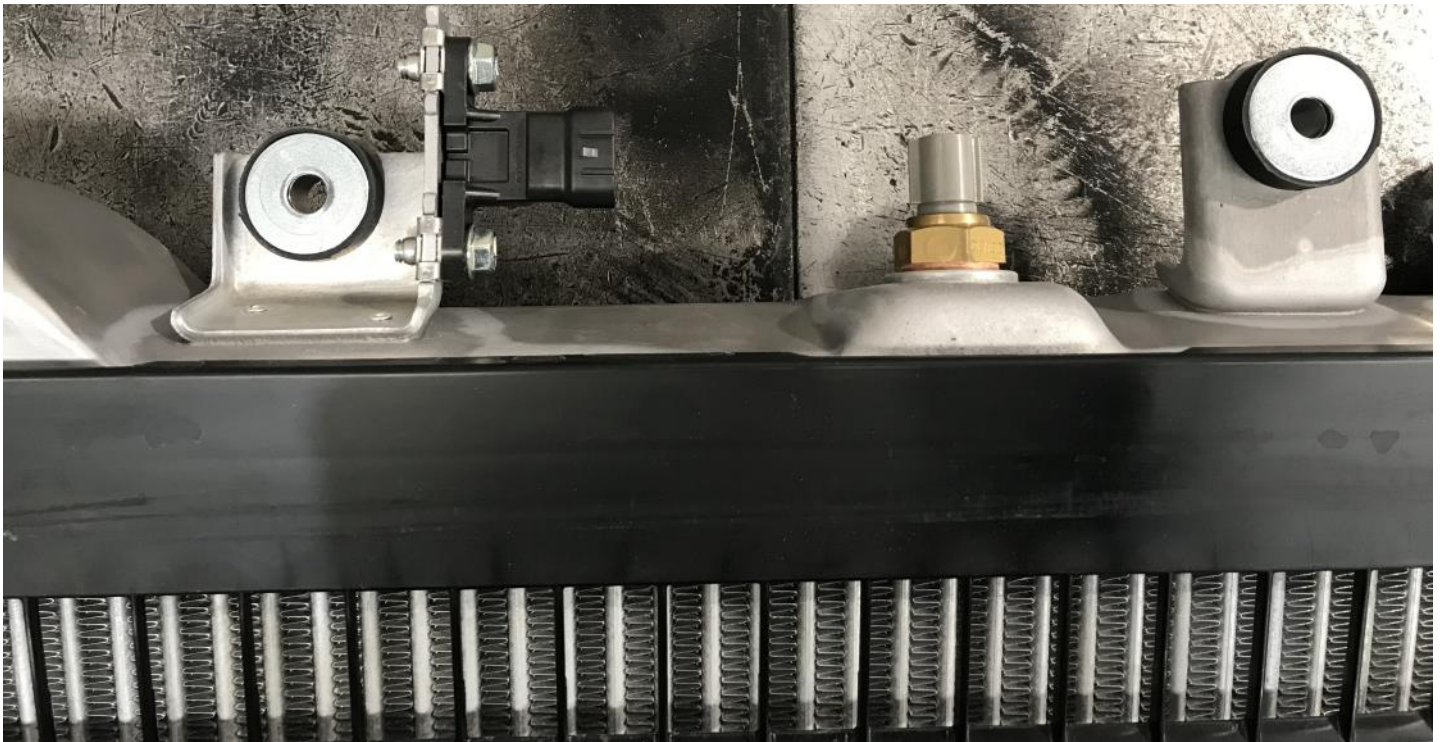


NEXT UNPLUG THE TWO CONNECTORS RUNNING TO THE DRIVERS SIDE THROTTLE BODY. ROTATE THROTTLEBODY 180 DEGREES AND REINSTALL. CONNECT THE EXTENSION LOOM SUPPLIED. THESE ARE VERY TIGHT. USE A PAIR OF PLYERS TO SQUEEZE TOGETHER MAKING SURE YOU HEAR A CLICK. IF NEEDED UNCLIP LOOM COVER AND RUN THE SECOND WIRE OUT THE REAR OF THE LOOM COVER AND CONNECT. RECLIP LOOM COVER.

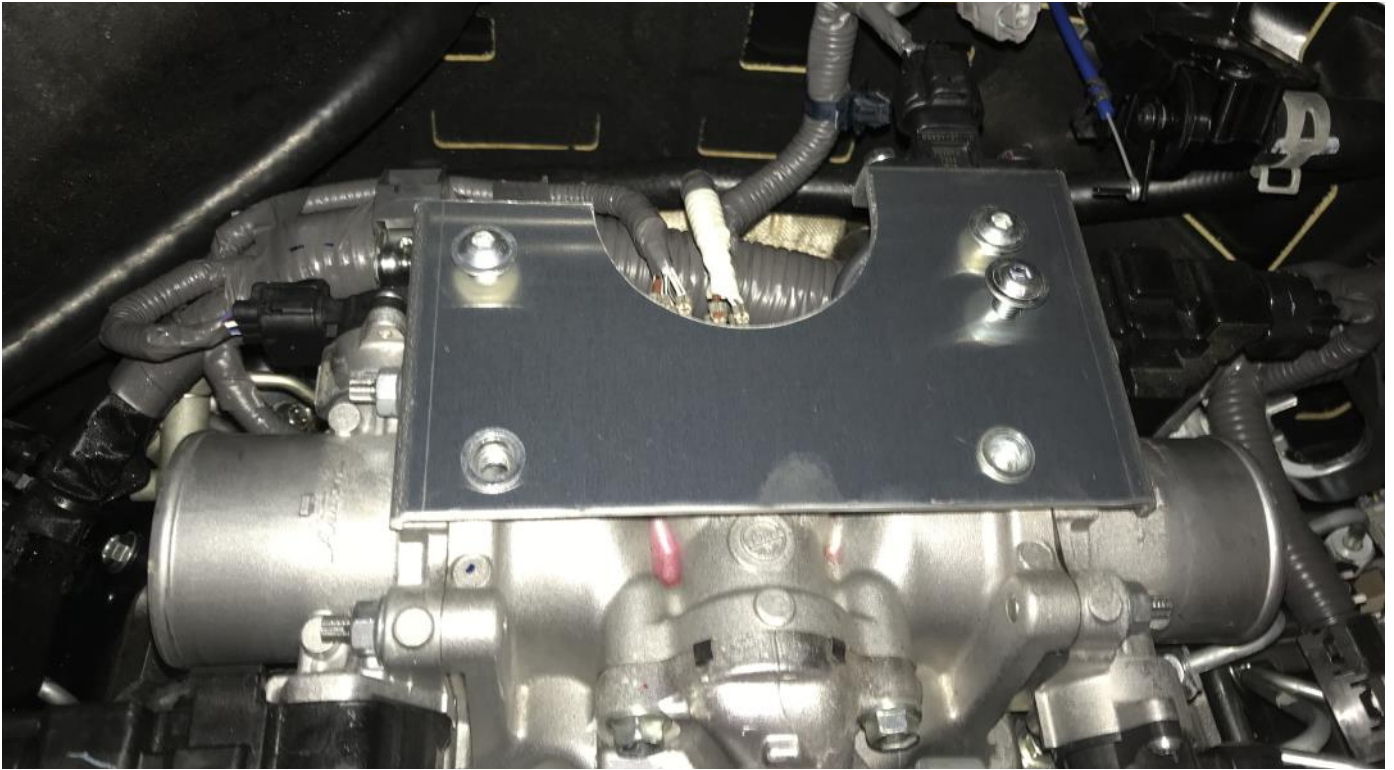


REMOVE THE MOUNTING RUBBERS AND WASHERS (FRONT AND REAR), TEMP SENSOR AND MAP SENSOR INCLUDING SPEED CLIPS FROM THE FACTORY INTERCOOLER. INSTALL THE TEMP SENSOR INTO INLET ADAPTOR USING FACTORY BRASS WASHER. INSTALL MOUNTING RUBBERS TO THE NEW INTERCOOLER FOLLOWED BY THE CRUSH TUBE WASHERS.

INSTALL SPEED CLIPS TO THE REAR INTERCOOLER BRACKET AND INSTALL MAP SENSOR AS SHOWN USING FACTORY BOLTS.



INSTALL THE REAR INTERCOOLER BRACKET AS SHOWN USING SUPPLIED M8X16 ALLEN HEAD BOLTS TO THE CENTRE OF THE SLOT. DUMMY FIT THE INTERCOOLER AND ADJUST IF NEEDED. CONNECT MAP SENSOR ELECTRICAL CONNECTOR AND MAP SENSOR VACUUM LINE.

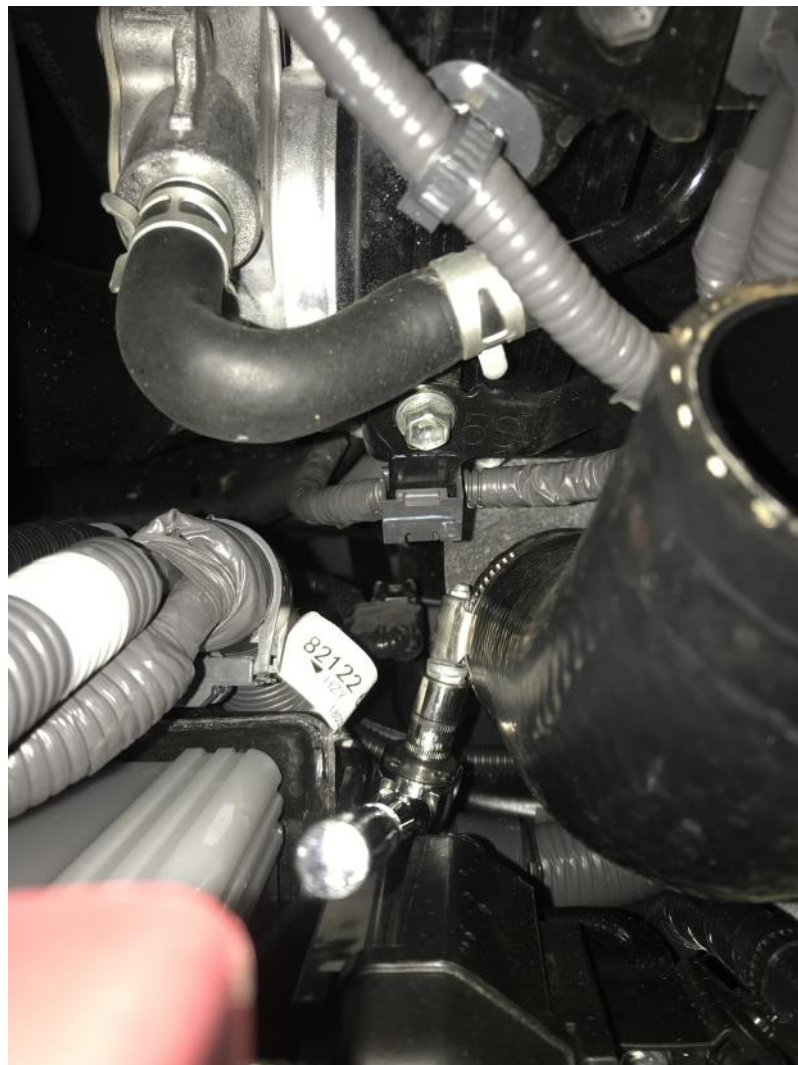


CLEAN THE MANIFOLD INLETS SO NO OIL IS PRESENT. INSTALL THE 180 SILICONE WITH THE SHORTER LEG ON DRIVERS SIDE AS SHOWN (1). THE EQUAL LENGTH 180 TO THE PASSANGER SIDE AND INLET ADAPTOR AS SHOWN WITH THE TEMP BOSS AND LONGER SIDE TO THE PASSANGER SIDE (2) ROTATING AS FAR BACK AS POSSIBLE TIGHTEN HOSE CLAMPS. ORIENTATE SO THE HOSE CLAMPS ARE ABLE TO BE TIGHTENED WITH THE INTER-COOLER FITTED. CONNECT AIR TEMP SENSOR.





REMOVE THE FACTORY HOSE OFF THE TUBRO PIPE (PASSENGER SIDE). THE BATTERY CAN BE REMOVED FOR BETTER ACCESS.



INSTALL STRAIGHT 2" SILICONE HOSE AND INSTALL BOTTOM HOSE CLAMP. INSTALL THE 45 DEGREE ALUMINIUM BEND AND SILICONE, LONG SIDE TO THE INTERCOOLER. PLACE HOSE CLAMPS OVER AND LEAVE PIPEWORK LOOSE.



INSTALL 2 SPACERS TO THE FRONT MOUNTING POINTS. MAKE SURE THE FAN WIRES ARE UNCLIPPED FROM THE FAN SHROUDS AND THE FAN WIRES ARE RUNNING TOWARDS THE REAR OF THE ENGINE BAY. INSTALL INTERCOOLER. WITH THE INTERCOOLER IN PLACE GENTLY LIFT UP THE REAR OF THE INTERCOOLER AND INSTALL THE REMAINING 2 SPACERS. INSTALL THE SUPPLIED M8X65 BOLTS AND FACTORY WASHERS. INSTALL M10 WASHERS AND INTERNAL THREADED BOLTS TO THE FRONT MOUNTING STUDS AND TIGHTEN ALL BOLTS. CONNECT TURBO SIDE PIPEWORK TO INTERCOOLER AND TIGHTEN HOSE CLAMPS.

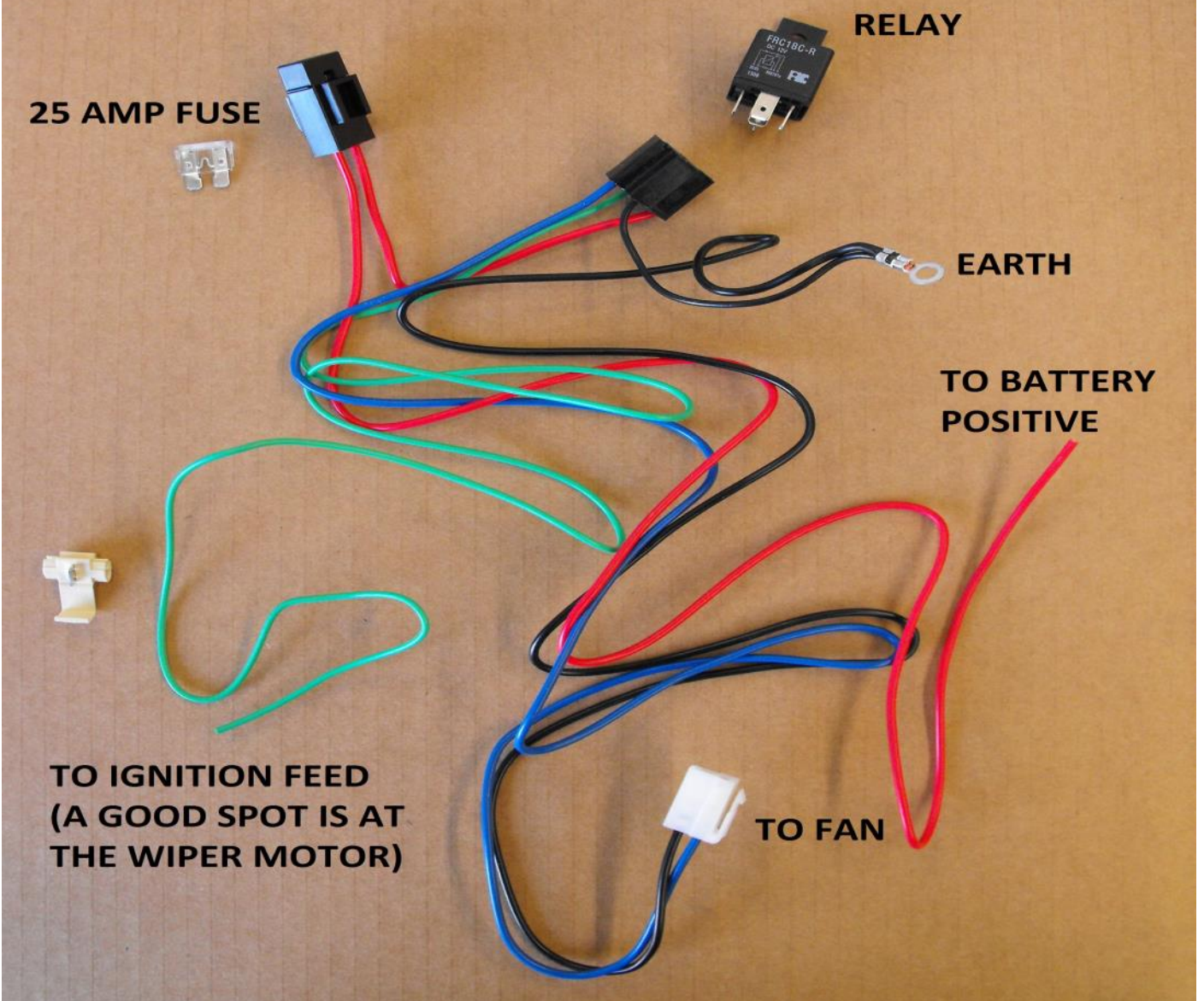


INSTALL REAR PIPEWORK AS SHOWN. DUE TO MINOR VARIATIONS BETWEEN VEHICLES THE 45 DEGREE SILICONE IS SUPPLIED LONG AND MAY NEED TO BE TRIMMED.

ONCE THE PIPEWORK IS INSTALLED TIGHTEN ALL HOSE CLAMPS.



WIRE IN THE FANS USING EITHER THE WIPER MOTOR OR THE BREAK OUT BOX AS A SOURCE FOR IGNITION. CONNECT FANS AND CHECK OPERATION.



REMOVE BONNET AND SET UPSIDE DOWN IN TRESTLES. REMOVE THE FACTORY DUCT WORK. PLACE THE NEW SHROUD ON THE BONNET LINING UP THE HOLES ON THE SHROUD WITH THE FACTORY HOLES ON THE BONNET SUPPORT STRUCTURE. MARK WHERE THE SOUND DEADENING NEEDS TO BE CUT OUT. REMOVE SHROUD AND TRIM SOUND DEADENING.



AT THE SAME TIME TRIM AROUND THE DRIVERS SIDE WASHER JET AS SHOWN AND CABLE TIE WASHER JET HOSE.

WITH THE SOUND DEADENING TRIMMED INSTALL THE NEW SHROUD USING THE TRIM CLIPS SUPPLIED. THE TOP LEFT HOLE WILL NEED TO BE DRILLED TO 6.5MM. USE A DRILL STOP ON THE DRILL AS NOT TO HIT THE BONNET SKIN UNDERNEATH WHEN DRILLING.

WITH THE SHROUD INSTALLED REFIT THE BONNET TO THE CAR. CHECK ALL FASTENERS AND HOSE CLAMPS AND TEST DRIVE THE VEHICLE.

AFTER A FEW DAYS OF DRIVING RE TENSION THE HOSE CLAMPS AND CHECK AT REGULAR-SERVICE INTERVALS. IF THE INTERCOOLER IS REMOVED CLEAN THE PIPE OUTLETS AND INSIDE THE ENDS OF THE SILICONES WITH A SOLVENT SO NO OIL IS PRESENT AT TIME OF RE INSTALLATION.

