



W A R N I N G

TOYOTA LANDCRUISER HDJ100 ULTIMATE FRONT MOUNT WITH HARD PIPE KIT FITTING INSTRUCTIONS

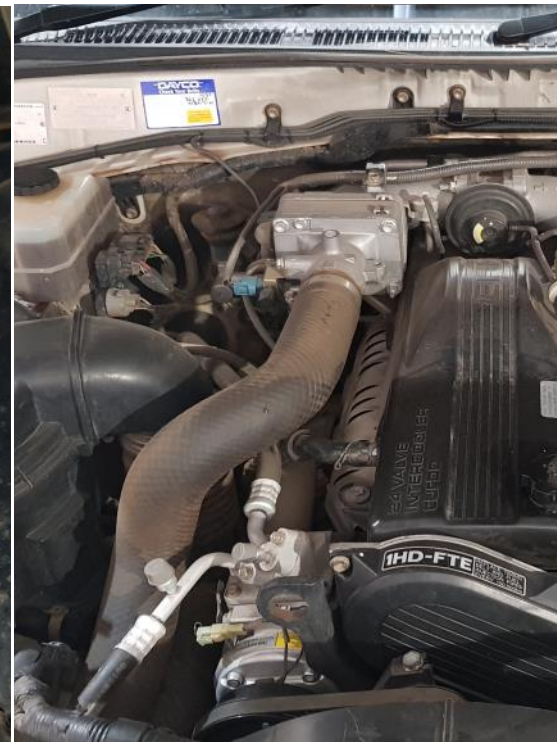
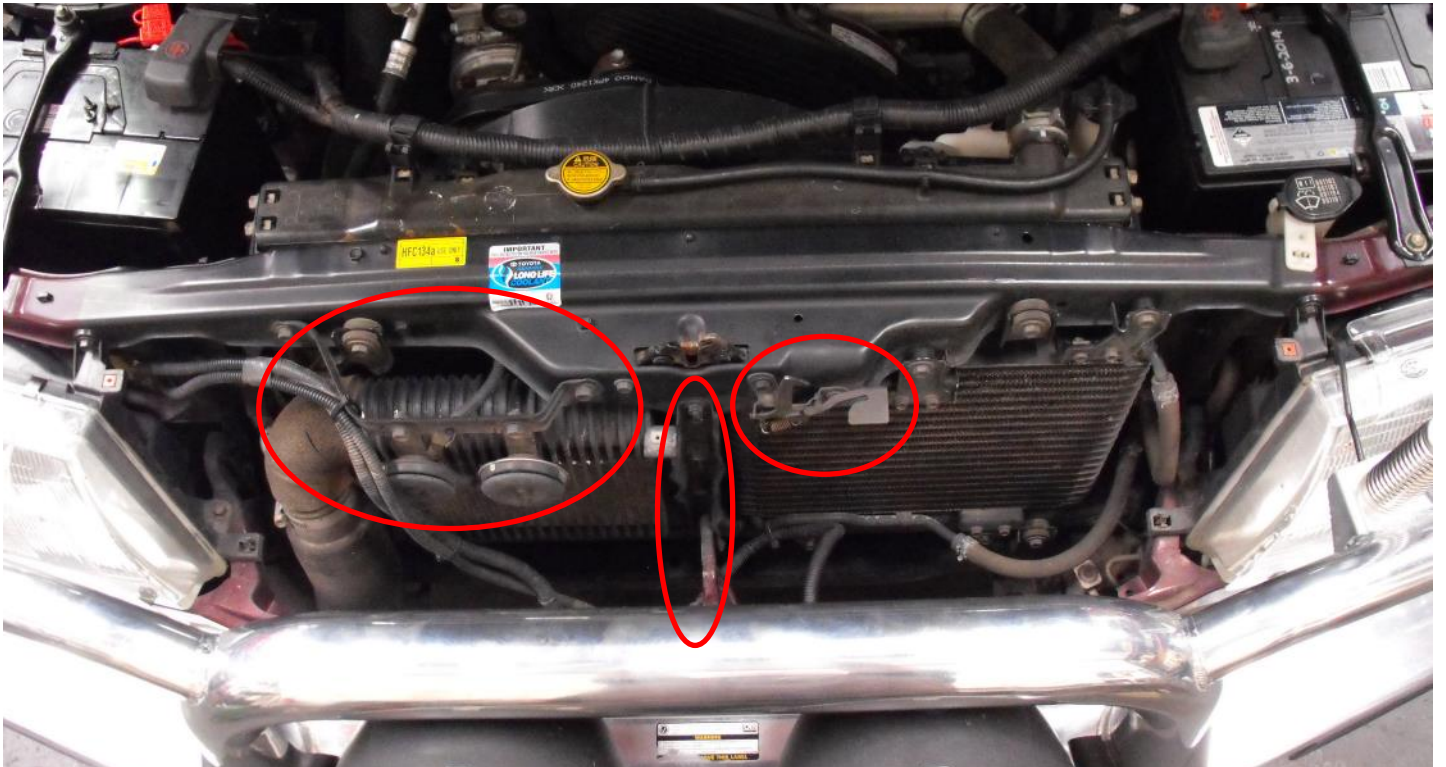
WARNING: Failure to follow this procedure will void your warranty.

- Do not use this product in any other motor vehicle for which it is not designed.
- Do not use any other mounting location / method other than described in this instruction.
- It is advisable to seek assistance of another person when installing this product.
- Do not repair or modify this product and / or its mounting bracket in any way - repair or modification may affect proper operation of the vehicle or cause destruction of property.
- Be sure to clean and remove any loose debris before removing pipe work as debris entering the engine could be detrimental to the engine and or components

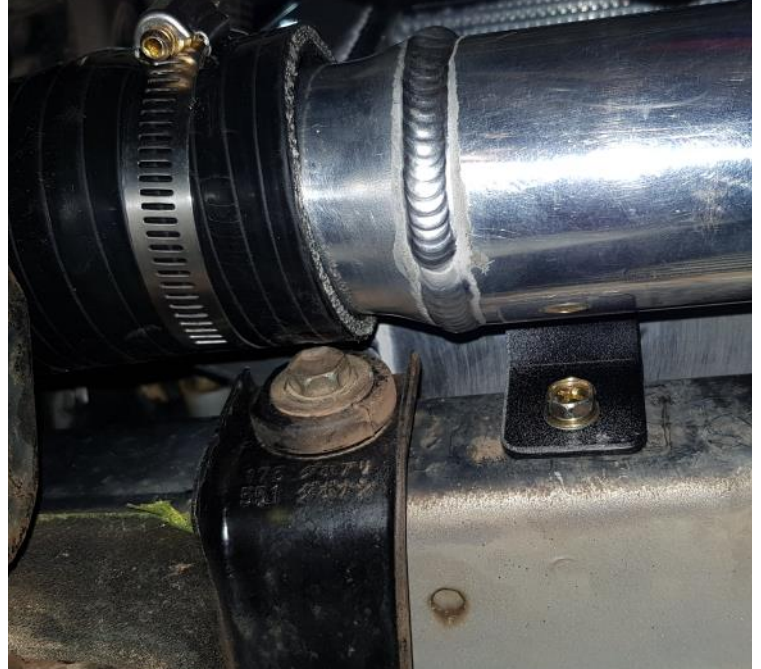
START THE INTERCOOLER INSTALL BY REMOVING THE FRONT GRILL. DISCONNECT AND REMOVE THE HORNS AND BRACKET. REMOVE THE BONNET LATCH.

IF FITTED REMOVE THE POWER STEERING COOLER (FIRST DRAIN THE RESIVOIR OF POWER STEERING FLUID), TRANS COOLER AND INTERCOOLER.REMOVE THE FACTORY INTERCOOLER PIPEWORK BACK TO THE TURBO OUTLET AND BACK TO THE CROSSOVER PIPE. REMOVE THE RUBBER HOSES FOR THE TRANS COOLER AND POWER STEERING COOLER TO THE HARDLINES GOING THROUGH THE RADIATOR SUPPORT. DO NOT REMOVE THE HARDLINES.

REMOVE THE CENTRE BONNET SUPPORT.



REMOVE APPROX 3-4MM OF MATERIAL LIKE SHOWN FROM THE RADIATOR SUPPORT PANEL. THIS IS TO ALLOW CLEARENCE FOR THE INTERCOOLER. THE DRIVERS SIDE LOWER CONDENSOR BRACKET WILL ALSO NEED TO BE TRIMMED AS SHOWN, REMOVE THE LIP OFF THE TOP OF THE BOLT HOLDING THE CONDENSOR BRACKET.



DEPENDING WHAT BULL BAR IS FITTED, REMOVE MATERIAL SHOWN FOR ADDED CLEARENCE.

INSTALL THE LOWER INTERCOOLER BRACKETS. WITH THE 6MM SLOTED BRACKET TO THE DRIVERS SIDE AND THE 8MM SLOTED BRACKET TO THE PASSANGER SIDE. INSTALL BOLT TO THE CENTRE OF THE SLOT.

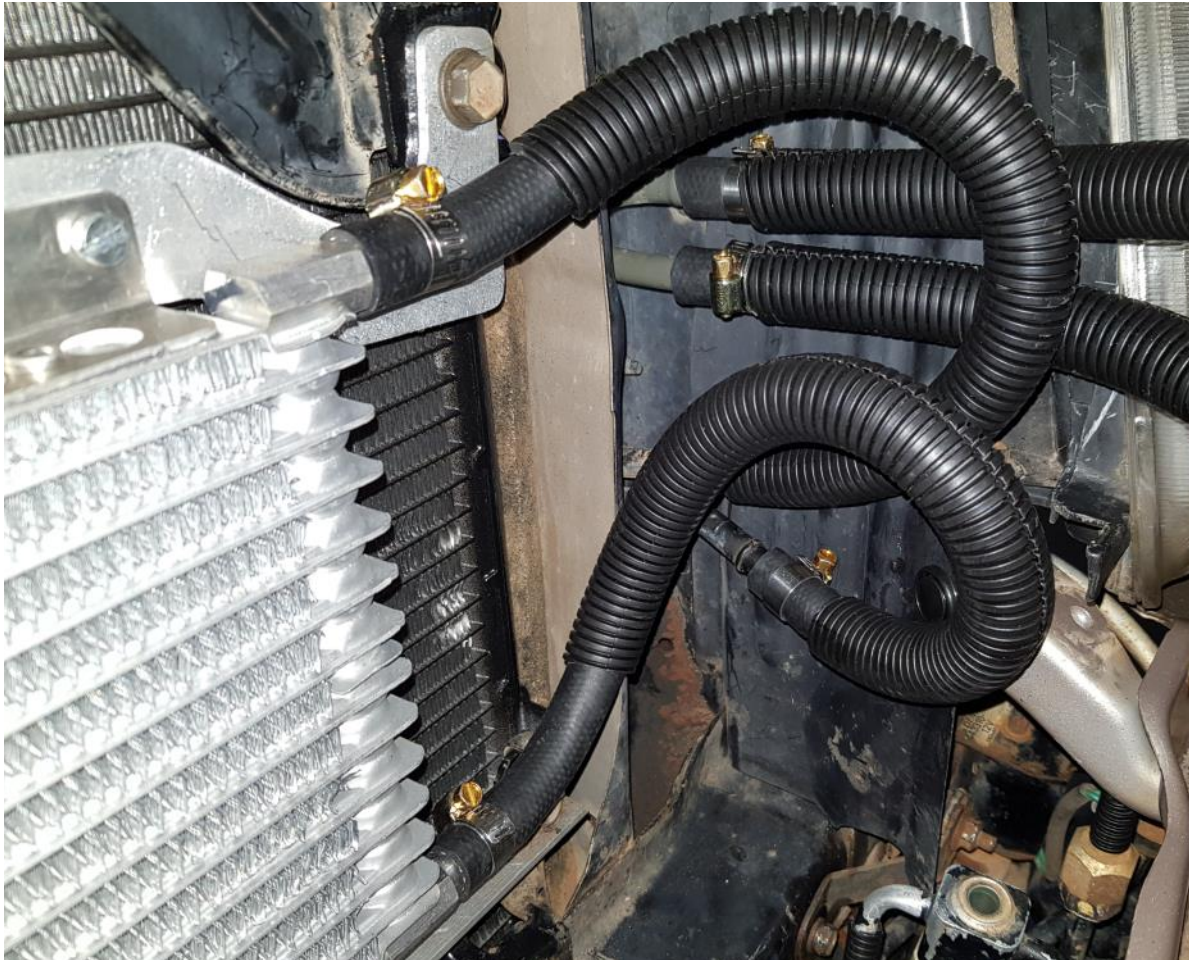


INSTALL THE TRANSCOOLER TO THE LOWER BRACKET SUPPLIED USING THE M5 BOLTS AND NUTS AND TIGHTEN. INSTALL THE TOP BRACKETS AS SHOWN LEAVING LOOSE. INSTALL THE TRANS COOLER WITH BRACKETS ATTACHED TO THE CONDENSOR SUPPORT BRACKETS AS SHOWN HAVING THE DRIVERS SIDE BETWEEN THE BRACKET AND CONDENSOR AND THE PASSANGER SIDE INFRONT OF THE BRACKET LIKE SHOWN. TIGHTEN ALL BOLTS.



INSTALL THE TWO LONG TRANS COOLER HOSES LIKE SHOWN USING HOSE CLAMPS SUPPLIED.

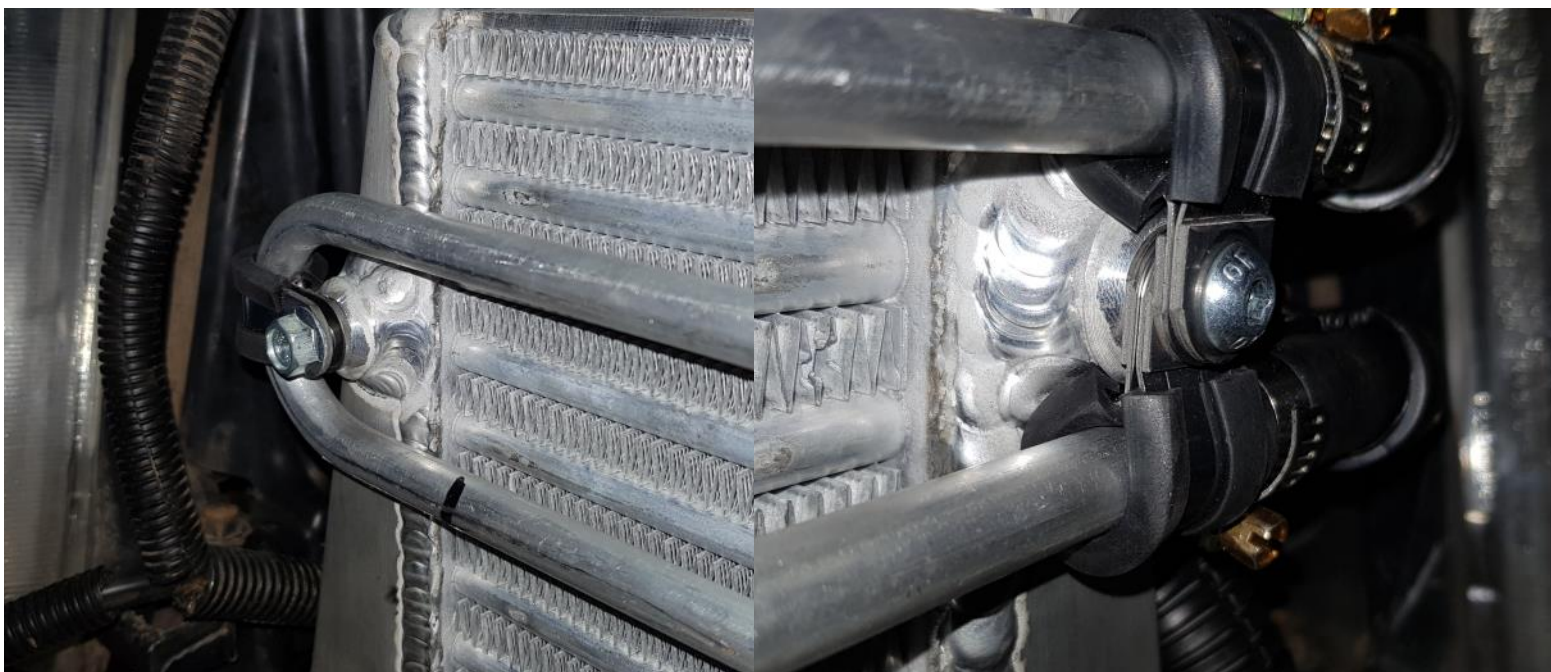
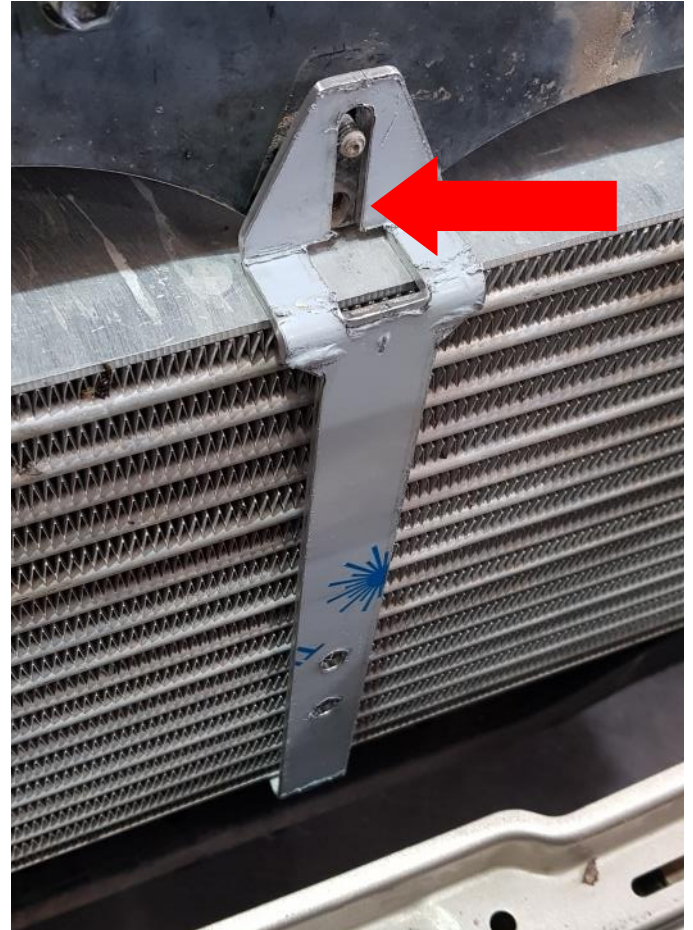
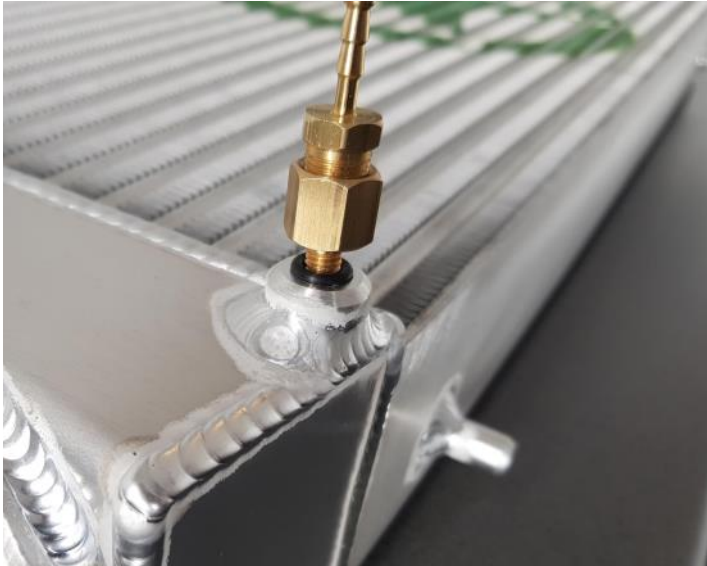
INSTALL THE TWO SHORT POWER STEERING HOSES AS SHOWN. INSTALL THE TWO CLAMPS ON TO THE HARD LINE END.



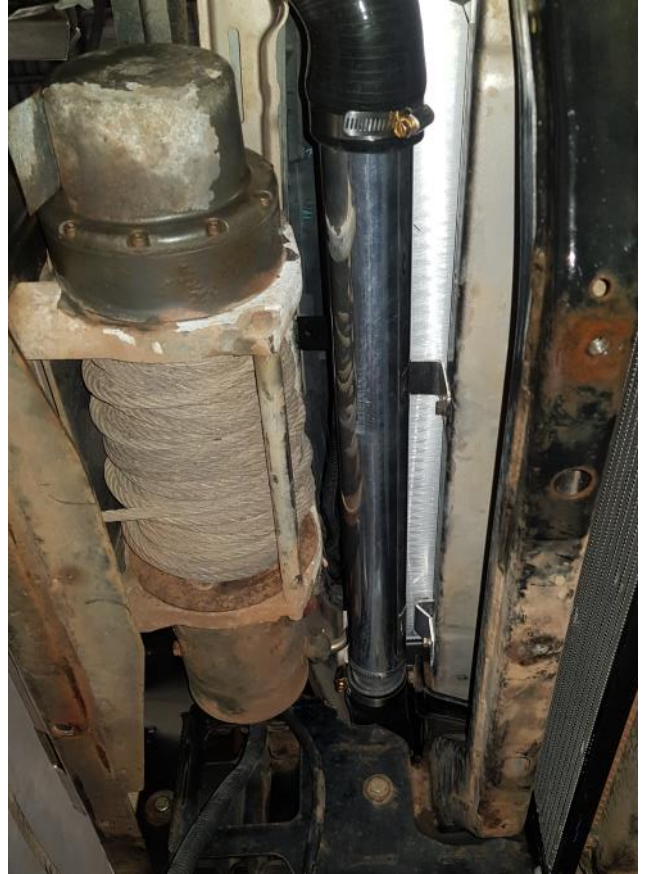
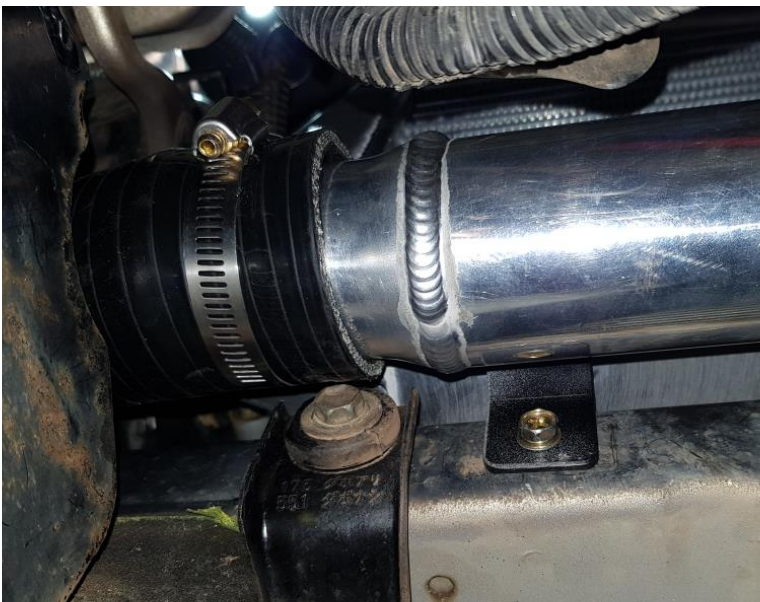
CAREFULLY INSTALL THE INTERCOOLER BY ORIENTATING THE INTERCOOLER HORIZONTALLY PUTTING THE DRIVERS SIDE IN PARTIALLY FOLLOWED BY THE PASSANGER SIDE BEING CAREFUL NO TO DAMAGE THE TRANS COOLER. WITH THE INTERCOOLER IN PLACE INSTALL THE TOP SUPPORT BRACKETS WITH SUPPLIED M8X25 BOLTS.



INSTALL THE OIL SCAVANGE FITTING TO THE BOTTOM OF THE INTERCOOLER. INSTALL THE RADIATOR SUPPORT BRACKET USING THE FACTORY NUT AND BOLT TOP AND BOTTOM AND THE M6X16 ALLEN HEAD IN POSITION SHOWN. AFTER THE CENTRE BRACKET IS IN PLACE INSTALL THE POWER STEERING COOLER TUBE IF APPLICABLE USING THE 3 SMALL P CLAMPS AND M6X12 ALLEN HEAD BOLTS. CONNECT POWER STEERING COOLER TO HOSES PREVIOUSLY FITTED USING HOSE CLAMPS SUPPLIED.



- INSTALL THE LONG END OF THE 40X100 2 1/4" 45 DEGREE SILICONE TO THE DRIVERS SIDE OF THE INTERCOOLER.
- INSTALL THE 60X60 2 1/4" 45 SILICONE TO THE BOTTOM OF THE INTERCOOLER, ORIENTATING SO IT IS NOT TOUCHING THE INTERCOOLER AND FITTED LIKE SHOWN.
- INSTALL THE LONG END OF THE 40X100 2 1/4" 45 DEGREE SILICONE TO THE END OF THE STRAIGHT ALUMINIUM PIPE, INSTALL HOSE CLAMPS LOOSE, FEED THE DRIVERS SIDE OF THE ALUMINIUM PIPE WITH THE SILICONE ATTACHED OVER THE CHASSIS ON THE DRIVERS SIDE.



- INSTALL 2 1/4" STRAIGHT SILICONE JOINER TO END A OF PIPE 1 AND 2. SLIDE LOOSE HOSE CLAMPS OVER PIPE AND INSTALL END B, OF PIPE 1 TO THE LOWER INTERCOOLER PIPE.
- INSTALL HARD PIPE BRACKET A AND B AS SHOWN USING THE M8X16 AND M8 X 25 HEX BOLTS SUPPLIED. DO FINGER TIGHT.
- SLIDE LOOSE HOSE CLAMPS OVER PIPE AND INSTALL END B OF PIPE 2 TO THE DRIVERS SIDE OF THE INTERCOOLER.
- IF FACTORY TURBO DUMMY FIT PIPE 4 LONG END TO THE TURBO AND PIPE 3 LONG END TO MANIFOLD AND ADJUST PIPE WORK. TIGHTEN MOUNTING BRACKETS AND INSTALL P CLAMPS AS SHOWN.
- TRIM THE 2'-2 1/4" STRAIGHT SILICONE REDUCERS FOR EACH PIPE. INSTALL WITH LOOSE HOSE CLAMPS.
- RE ADJUST AND TIGHTEN ALL HOSE CLAMPS.

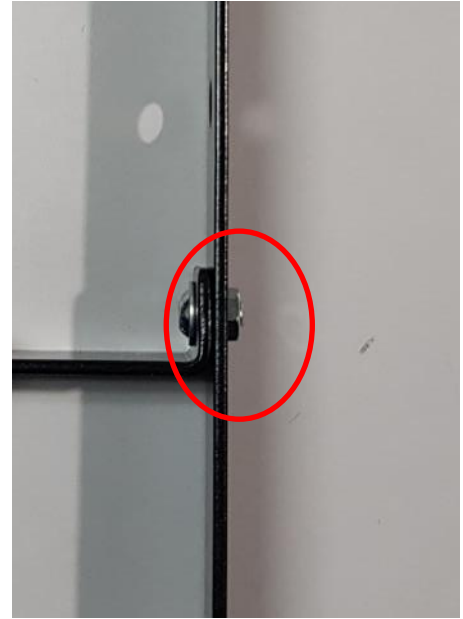


IF AFTER MARKET TURBO, INSTALL PIPE 5 IN PLACE OF PIPE 4, AND 2"-2 1/4" 135 DEGREE REDUCER IN PLACE OF THE STRAIGHT REDUCER. SOME TRIMMING OF THE SILICONE MAY BE REQUIRED.

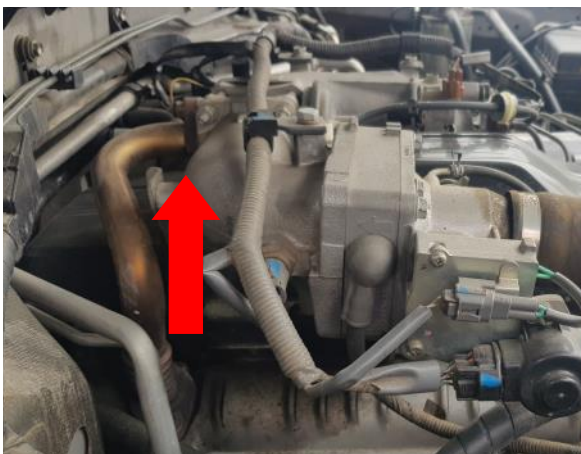


INSTALL SUPPLIED 3MM VACUUM HOSE FROM OIL SCAVANGE FITTING ON THE INTERCOOLER TO THE FITTING ON THE CROSSOVER PIPE AS SHOWN. SECURE WITH CABLE TIES.

INSTALL THE LOWER GRILL SUPPORT BRACKET WITH THE M6X10 ALLEN HEAD BOLT AND M6 HALF NUT. **CONFIRM THERE IS CLEARANCE BETWEEN THE HALF NUT AND INTERCOOLER.** MOUNT TO SKIRT PANEL WITH M5 HEX BOLT AND NUT.



REINSTALL THE HORNS AND BRACKET AND BONNET LATCH, REINSTALL GRILL USING SUPPLIED UPPER GRILL SUPPORT WITH M5 HEX BOLT AND NUT.



INSTALL OPTIONAL EGR BLANK.

REFILL POWER STEERING RESIVOIR, TOP UP TRANSMISSION FLUID AND CHECK FLUID LEVEL.

WITH THE INTERCOOLER INSTALLED CHECK ALL HOSE CLAMPS AND FIXINGS ARE TIGHT. TEST DRIVE THE VEHICLE. AFTER A WEEK OF DRIVING RE TENSION THE HOSE CLAMPS AND CHECK AT REGULAR SERVICE INTERVALS. IF PIPEWORK IS EVER REMOVED MAKE SURE THE ENDS OF THE HOSE CONNECTIONS ARE CLEANED WITH A SOLVENT LIKE BREAK CLEANER AND ARE FREE OF OIL.