



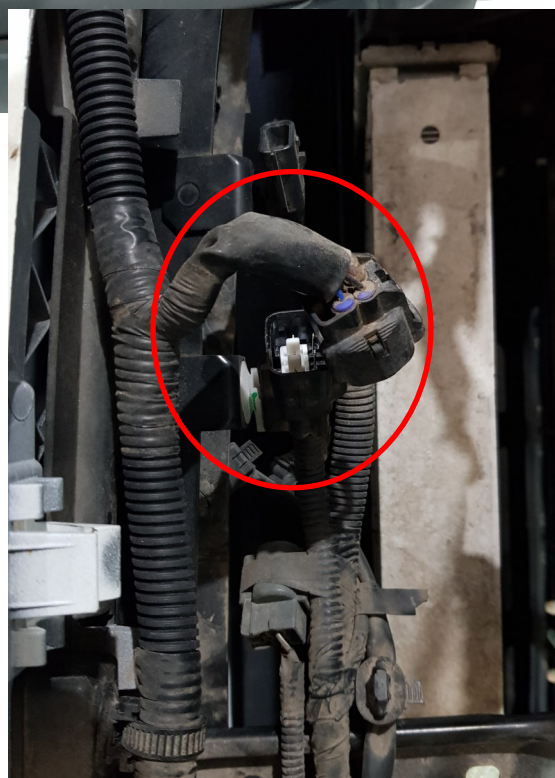
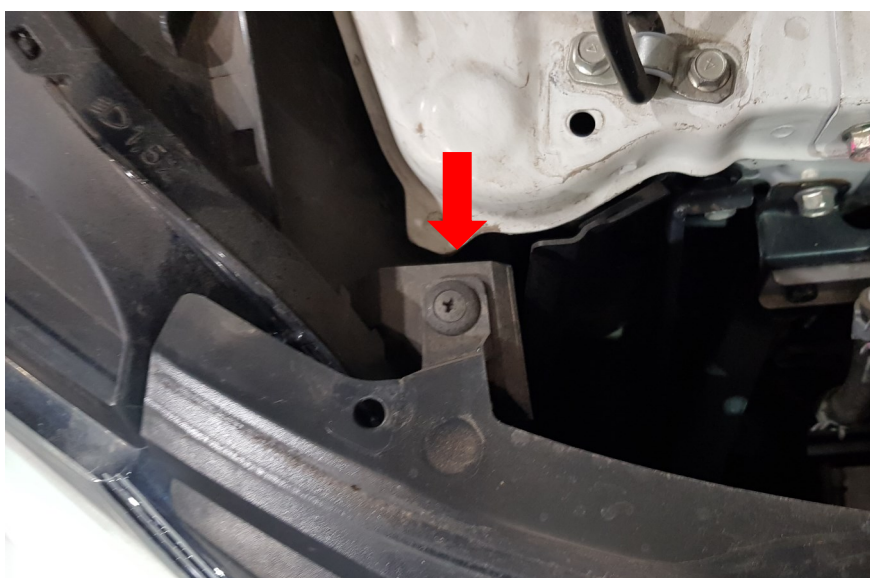
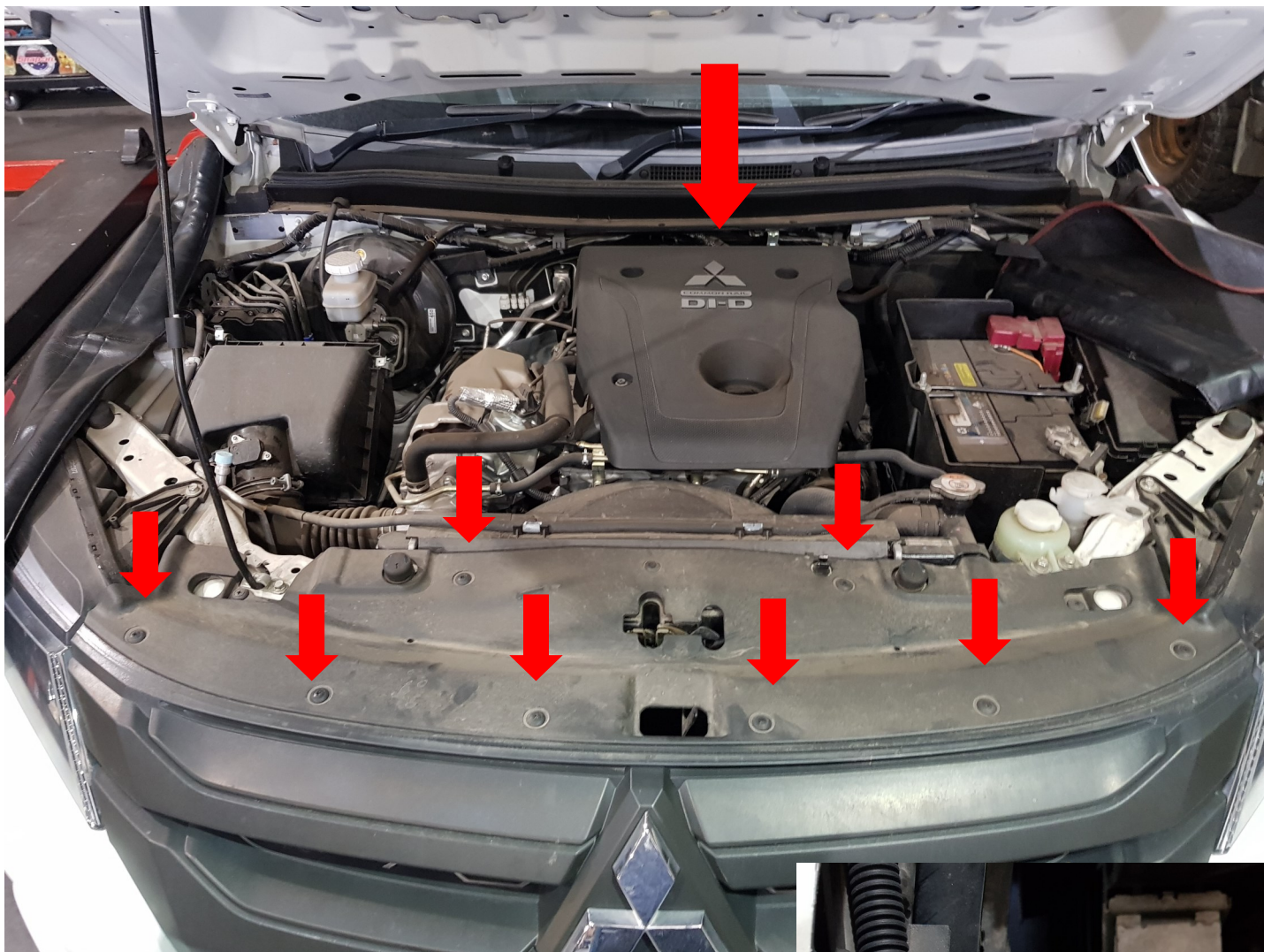
W A R N I N G

MITSUBISHI TRITON 2015 ON MQ MR 2.4L INTERCOOLER FITTING INSTRUCTIONS

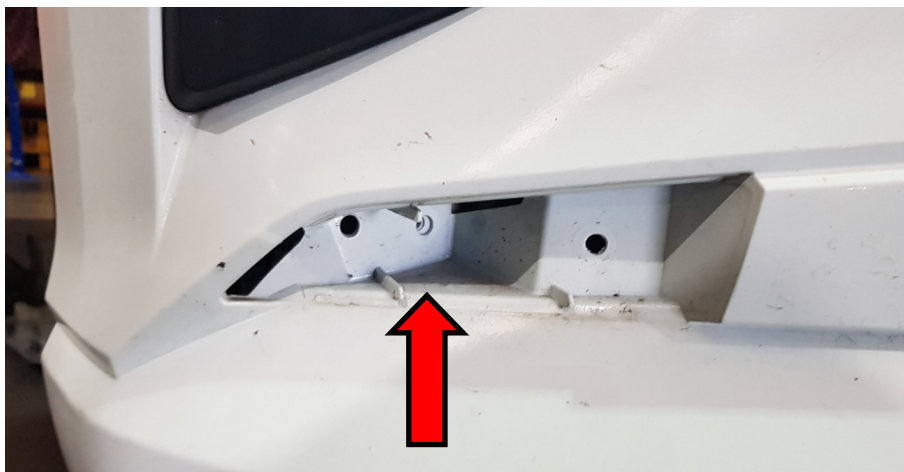
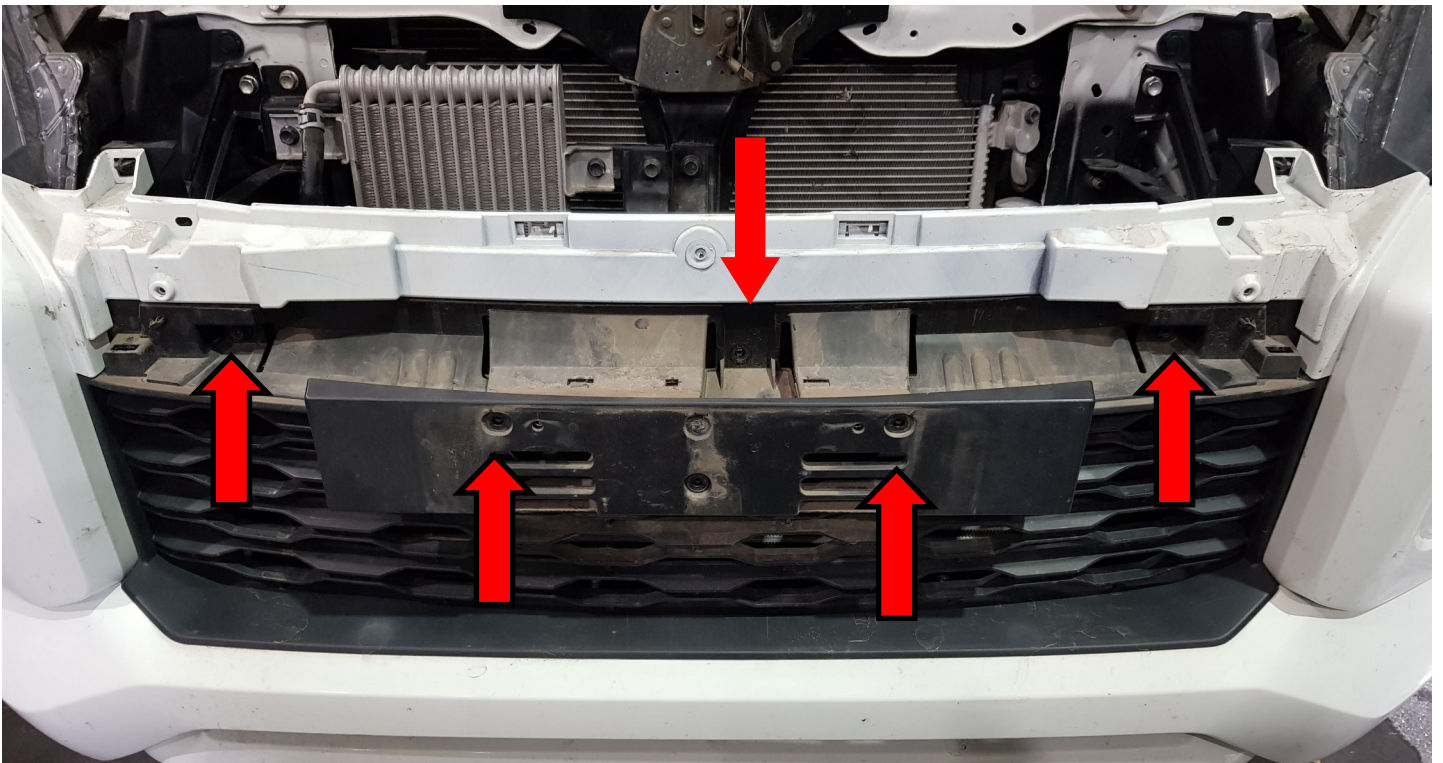
WARNING: Failure to follow this procedure will void your warranty.

- Do not use this product in any other motor vehicle for which it is not designed.
- Do not use any other mounting location / method other than described in this instruction.
- It is advisable to seek assistance of another person when installing this product.
- Do not repair or modify this product and / or its mounting bracket in any way - repair or modification may affect proper operation of the vehicle or cause destruction of property.
- Be sure to clean and remove any loose debris before removing pipe work as debris entering the engine could be detrimental to the engine and or components

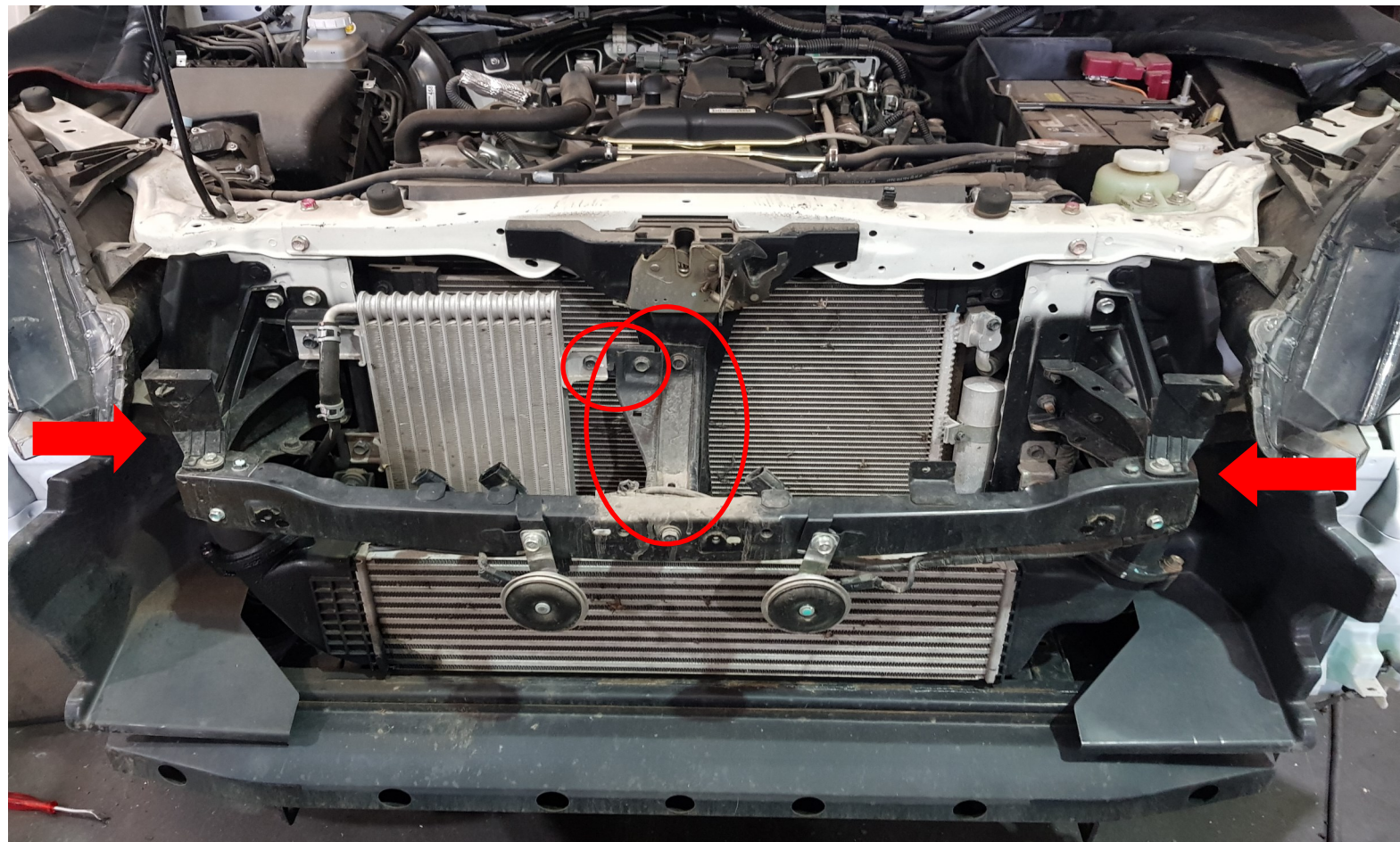
START THE INTERCOOLER INSTALL BY REMOVING THE ENGINE COVER, FOLLOWED BY THE PLASTIC GRILL COVER. REMOVE THE GRILL (2 SCREWS AT TOP AND CLIPS ALONG THE BOTTOM EDGE) DISCONNECT WIRING HARNESS. REMOVE MUD FLAPS AND PLASTIC INNER GUARDS. ON MQ MODELS CAREFULLY REMOVE THE FLARES BY SQUEEZING THE INNER SIDE OF THE TRIM CLIP WITH POINTY NOSE PLIERS AND PUSHING BACK THROUGH THE HOLE. IF THE VEHICLE IS FITTED WITH A BULLBAR IT WILL NEED TO BE REMOVED TO INSTALL THE INTERCOOLER.



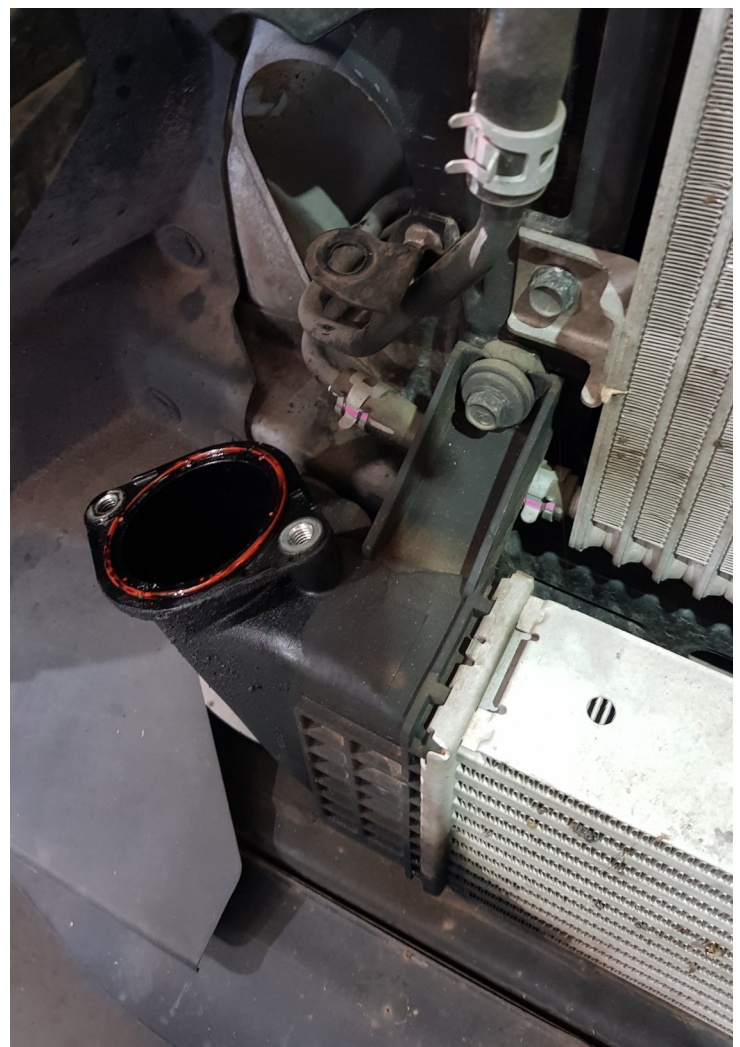
WITH THE FLARES REMOVED START REMOVAL OF THE BUMPER. MQ MODELS UNDO THE THREE SCREWS HOLDING THE BUMPER AND POP THE SIDES OF THE BUMPER FROM THE GUARD. MR MODELS REMOVE NUMBER PLATE AND PLASTIC TRIM BELOW THE FOG LIGHTS AND UNDO ALL SCREWS. POP OUT THE SIDE OF THE BUMPER AND REMOVE.



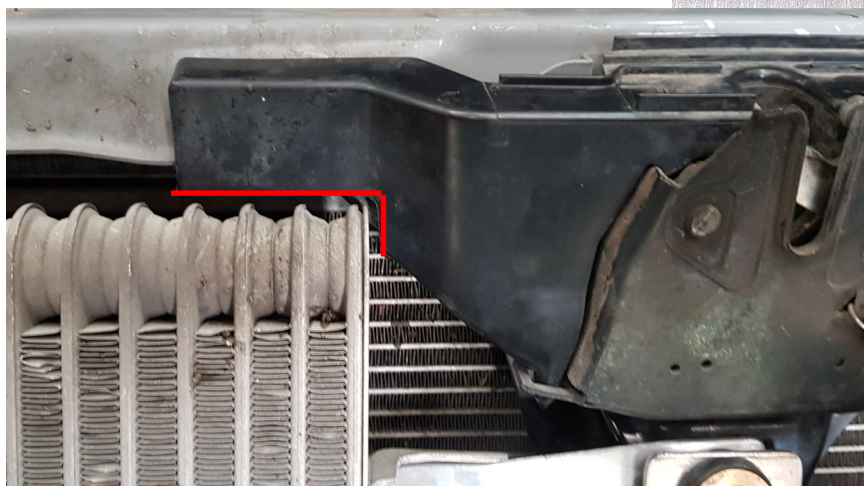
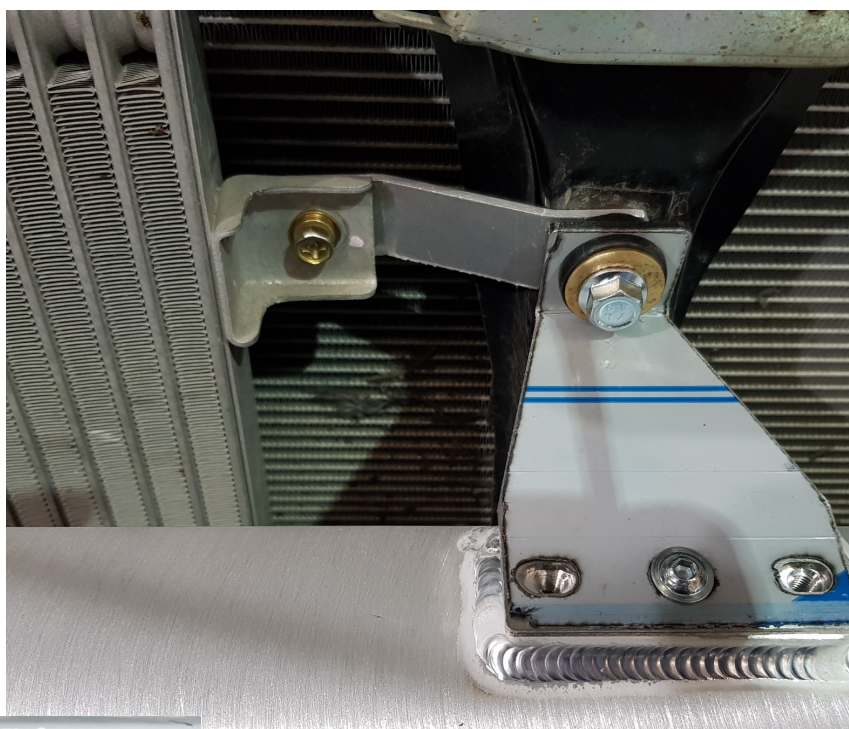
REMOVE BUMPER SUPPORT BRACE AND SET OFF TO THE SIDE. REMOVE CENTRE BRACKET AND SMALL BRACKET HOLDING THE TRANS COOLER AND DISCARD.



REMOVE AIRBOX LID AND PIPE TO GAIN BETTER ACCESS. REMOVE INTERCOOLER PIPEWORK FROM TURBO AND INTAKE MANIFOLD. UN BOLT PIPEWORK FROM FACTORY INTERCOOLER TO MAKE REMOVAL EASIER. REMOVE FACTORY INTERCOOLER BY UNDOING THE 4 MOUNTING BOLTS. CLEAN THE TURBO OUTLET AND MANIFOLD INLET SO THEY ARE FREE OF OIL.

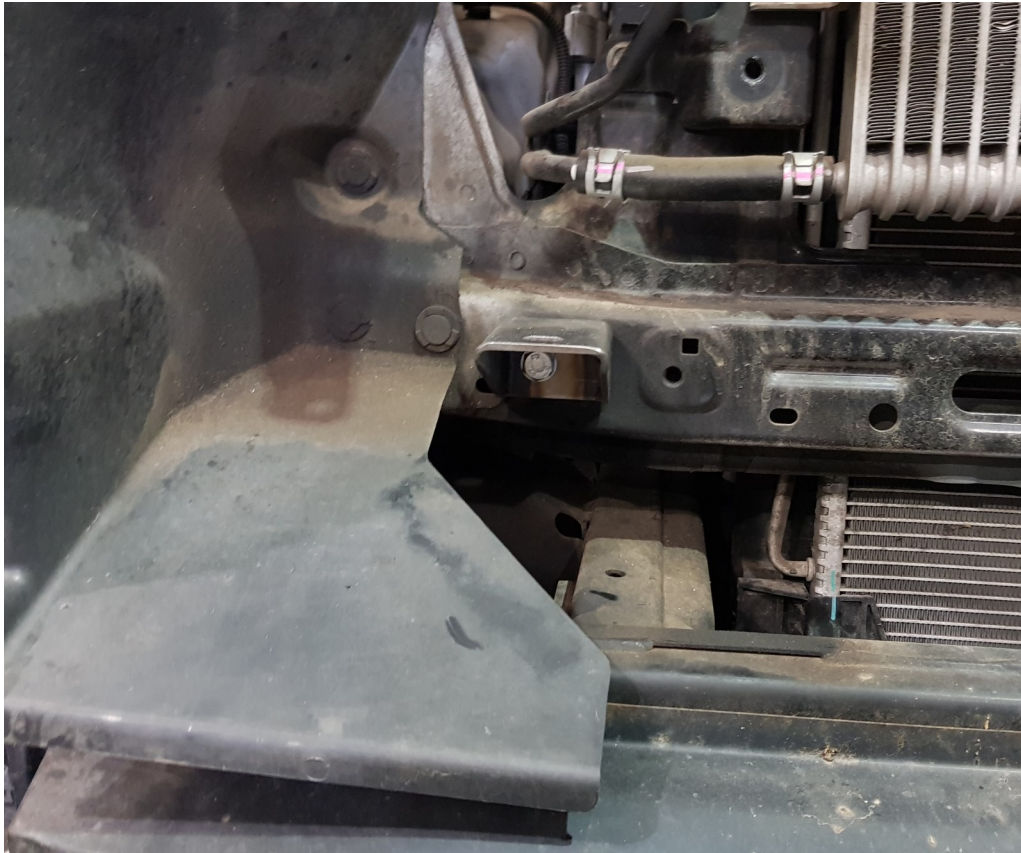


REMOVE THE LARGE DRIVERS SIDE TRANS COOLER SUPPORT BRACKET AND CUT BRACKET AS SHOWN, PAINT BARE METAL AND RE INSTALL LOWER SECTION. INSTALL SUPPLIED TRANS COOLER BRACKETS A AND B.

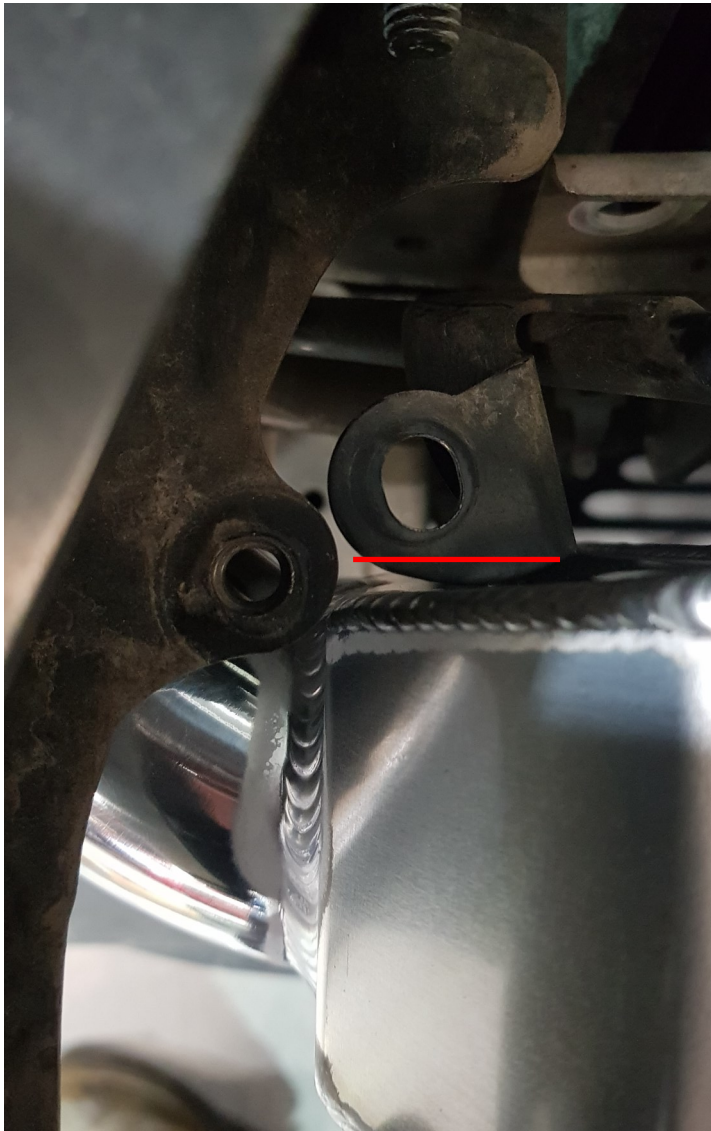


TRIM THE BONNET LATCH PLASTIC AS SHOWN FOR CLEARANCE FOR THE TRANS COOLER.

INSTALL THE LOWER INTERCOOLER SUPPORT BRACKETS WITH THE OFFSET BRACKET ON THE DRIVERS SIDE OF THE CAR AS SHOWN. MAKE SURE THE BRACKETS ARE HORIZONTAL AND TIGHTEN USING M8X20 BOLTS AND WASHERS SUPPLIED.



BEFORE INSTALLING THE INTERCOOLER GRIND A SMALL AMOUNT OFF THE TRANS COOLER LINE SUPPORT BRACKET, PAINT BARE METAL AND INSTALL RELOCATION BRACKET AS SHOWN.



REMOVE TWO OF THE FACTORY INTERCOOLER MOUNTING RUBBERS AND CRUSH TUBES AND INSTALL ON THE INTERCOOLER AS SHOWN. INSTALL THE TOP INTERCOOLER BRACKET TO THE INTERCOOLER USING THE 3X M6X10 ALLEN HEAD BOLTS. INSTALL THE INTERCOOLER INTO THE CAR USING THE M8X25 BOLT ON THE TOP BRACKET AND THE 2 M8X30 BOLTS AND NUTS ON THE BOTTOM BRACKETS. MAKE SURE THE TRANS COOLER MOUNTING BRACKET IS BEHIND THE UPPER INTERCOOLER BRACKET LIKE SHOWN.



CHECK PIPE CLEARANCE TO THE RADIATOR SUPPORT PANEL. IF NEEDED LOOSEN MOUNTING BOLTS TO ADJUST SIDE TO SIDE.



WITH THE INTERCOOLER FITTED INSTALL THE TURBO SIDE PIPEWORK USING THE 2-2 1/4" STRAIGHT REDUCER 2 1/4" 45 DEGREE ALUMINIUM BEND AND 2 1/4" 45 DEGREE SILICONE. USING THE 1X HS32 HOSE CLAMP AND 3X HS40 HOSE CLAMPS.



INSTALL THE MANIFOLD SIDE PIPEWORK USING THE 2 3/4" - 2 1/2" STRAIGHT REDUCER, 2 1/2" ALUMINIUM PIPE (53 DEGREE END TO MANIFOLD AND 45 DEGREE END TOWARDS THE INTERCOOLER) AND THE 2 1/2" 45 DEGREE SILICONE WITH THE SHORT END TO THE INTERCOOLER. USING THE 1X HS44 AND 3X HS40 HOSE CLAMPS.



CHECK ALL HOSE CLAMPS AND BOLTS ARE TIGHT.

RE INSTALL THE BUMPER SUPPORT BRACKET. INSTALL AMBIENT AIR TEMP SENSOR AS SHOWN USING THE SPARE HOLE. CABLE TIE WIRING LOOM AWAY FROM THE INTERCOOLER SO IT IS NOT TOUCHING. RE INSTALL BUMPER (CONNECT WIRING HARNESS) BULL BAR, FLARES, INNER WHEEL ARCHES, MUD FLAPS, GRILL, PLASTIC COVER AIRBOX AND PIPE, ENGINE COVER AND BULLBAR IF APPLICABLE.

TEST DRIVE THE VEHICLE. AFTER 100KM OF DRIVING RE TENSION THE HOSE CLAMPS AND CHECK AT REGULAR SERVICE INTERVALS. IF THE HOSES ARE REMOVED CLEAN THE MATING SURFACES SO THEY ARE FREE OF OIL ON RE ASSAMBLY.

