



TOYOTA HILUX GUN126 2.8

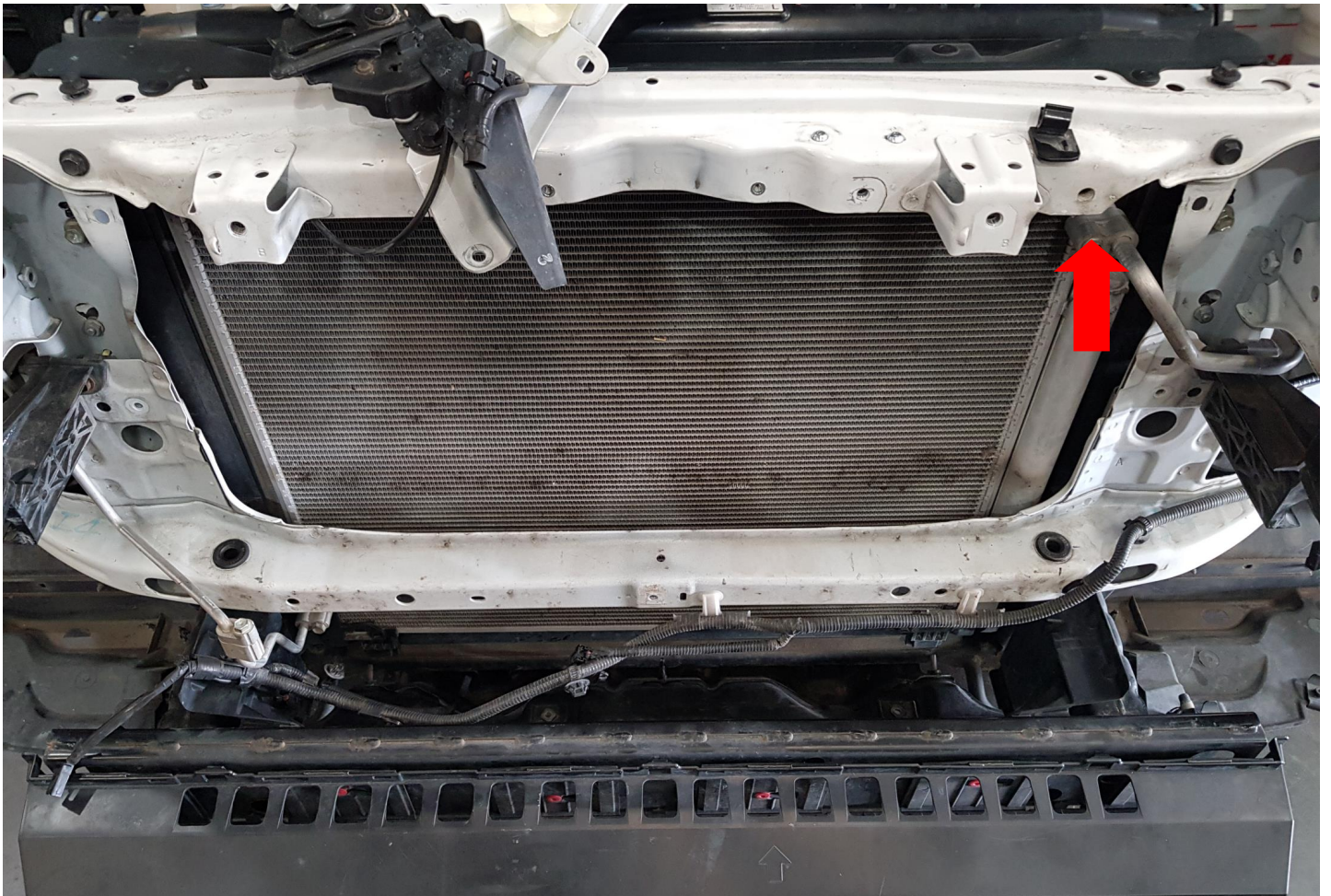
INTERCOOLER UPGRADE

2020 ON

 **W A R N I N G**

WARNING: Failure to follow this procedure will void your warranty.

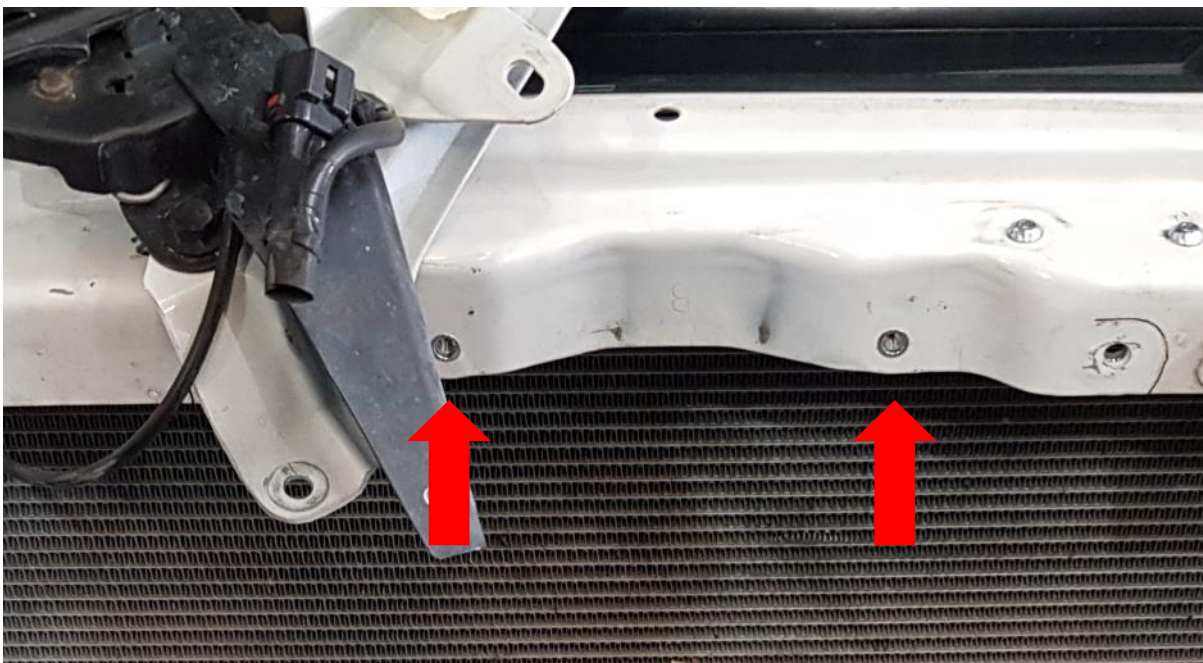
- Do not use this product in any other motor vehicle for which it is not designed.
- Do not use any other mounting location / method other than described in this instruction.
- It is advisable to seek assistance of another person when installing this product.
- Do not repair or modify this product and / or its mounting bracket in any way - repair or modification may affect proper operation of the vehicle or cause destruction of property.
- Be sure to clean and remove any loose debris before removing pipe work as debris entering the engine could be detrimental to the engine and or components



REMOVE GRILL, BUMPER, PLASTIC REINFORCING, HORNS, SIDE DUCTING, FACTORY INTERCOOLER AND PIPEWORK. MARK BONNET CATCH AND UNBOLT AND PLACE OUT OF THE WAY.

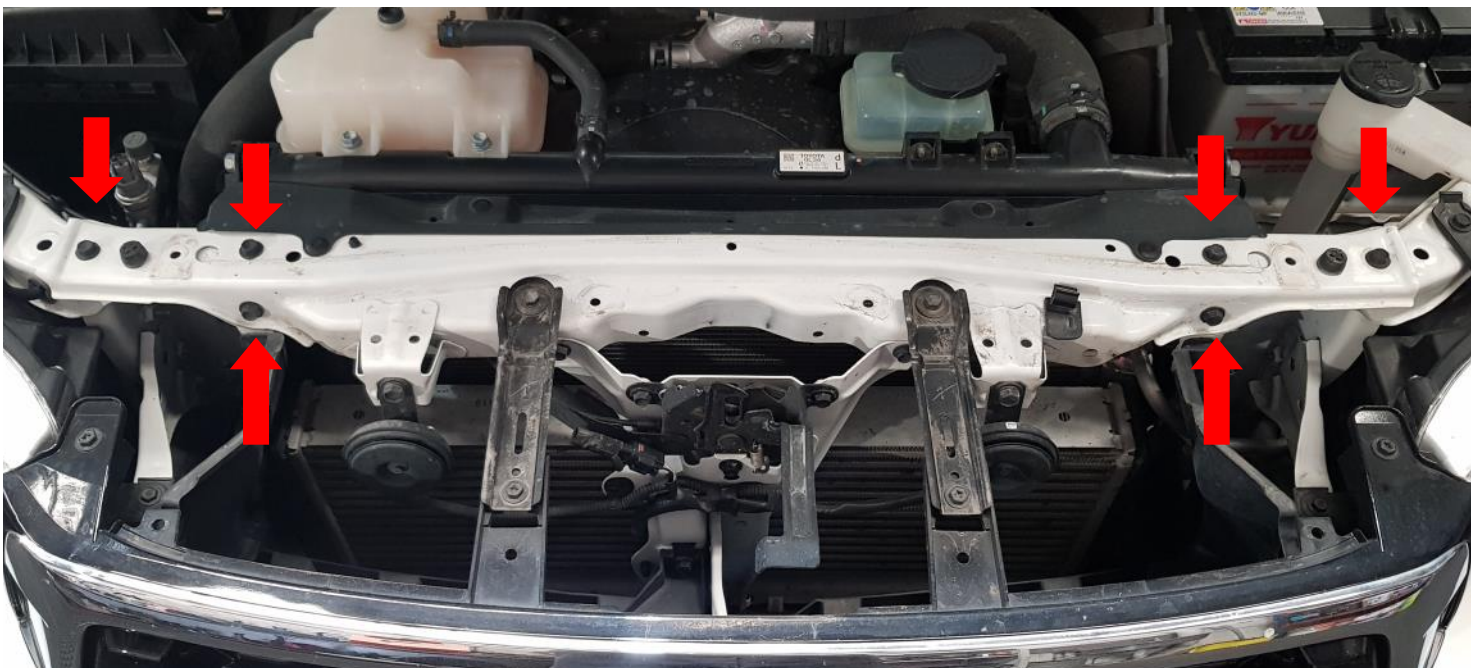
TRIM RADIATOR SUPPORT AS SHOWN. PICTURES NEXT PAGE

IF APPLICABLE INSTALL M5 NUTSERTS TO FACTORY HOLES AS SHOWN USING SUPPLIED M5X30 BOLT, M6 SAFETY NUT, M6 WASHER TO INSTALL NUTSERT. (YOUTUBE HAS MULTIPLE VIDEOS SHOWING HOW TO DO THIS)

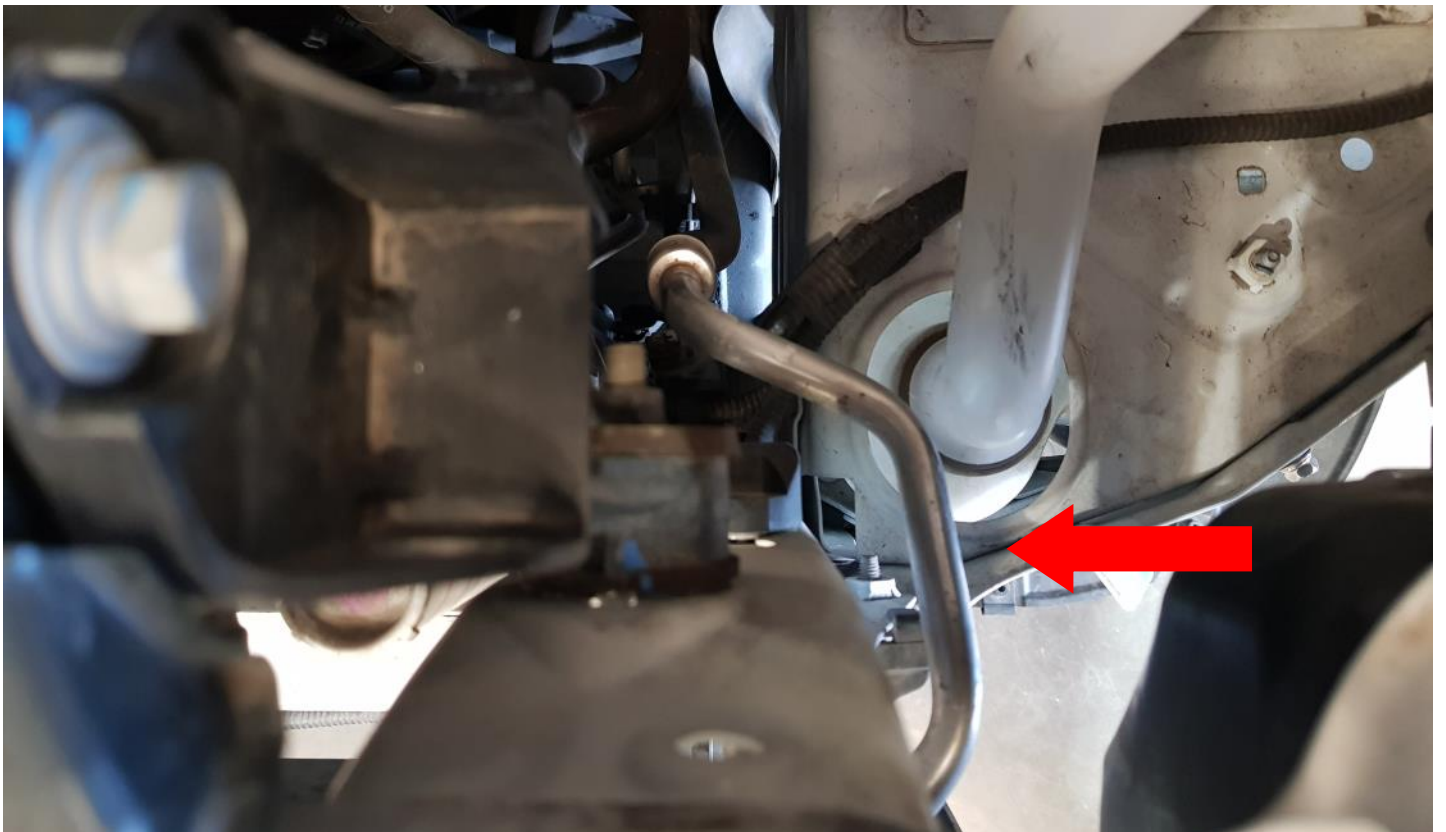


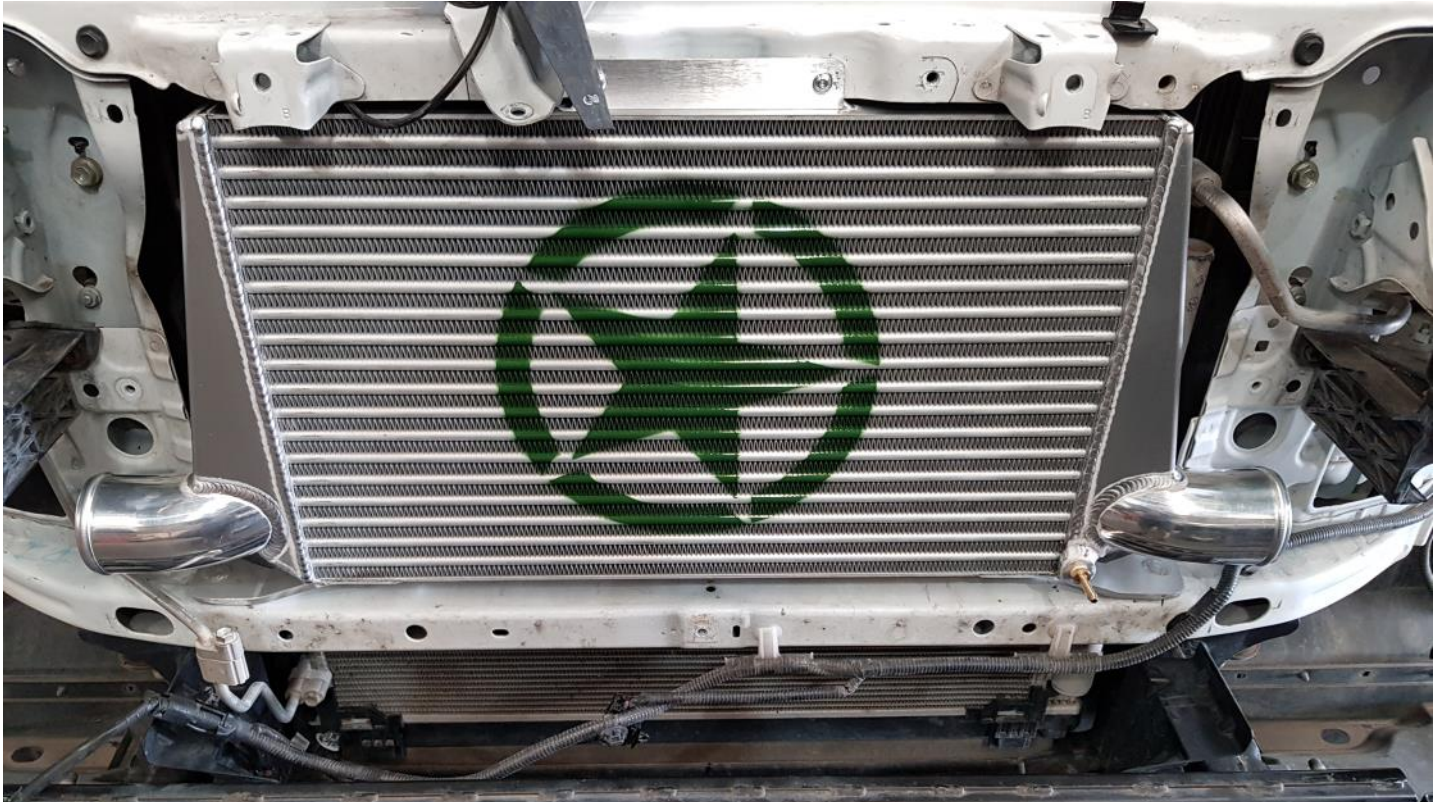


TRIM AS SHOWN. ONCE TRIMMED. LOSEN BOLTS HOLDING THE CENTRE RADIATOR SUPPORT PIECE SO THE INTERCOOLER CAN BE INSTALLED.



ADJUST AIRCON LINES TO ALLOW CLEARANCE TO NEW PIPE WORK.





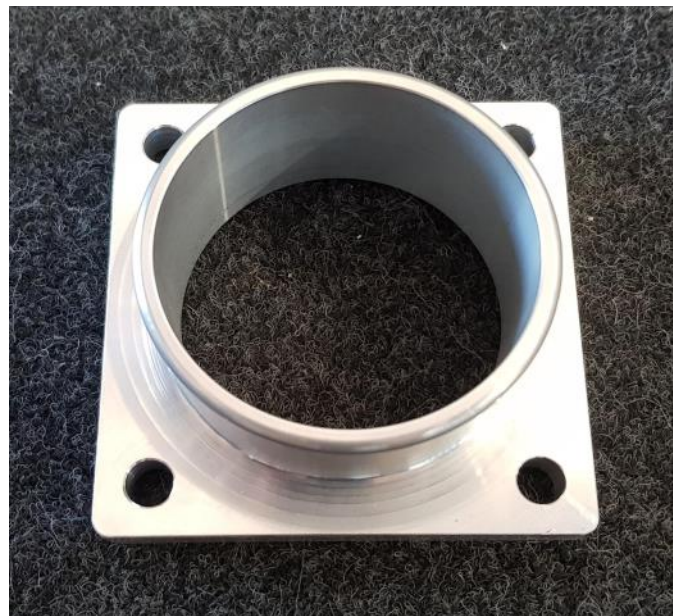
INSTALL INTERCOOLER LIFTING THE RADIATOR SUPPORT PANEL SLIGHTLY FOR EASE OF FITMENT. ONCE FITTED RETIGHTEN BOLTS ON THE SUPPORT PANEL

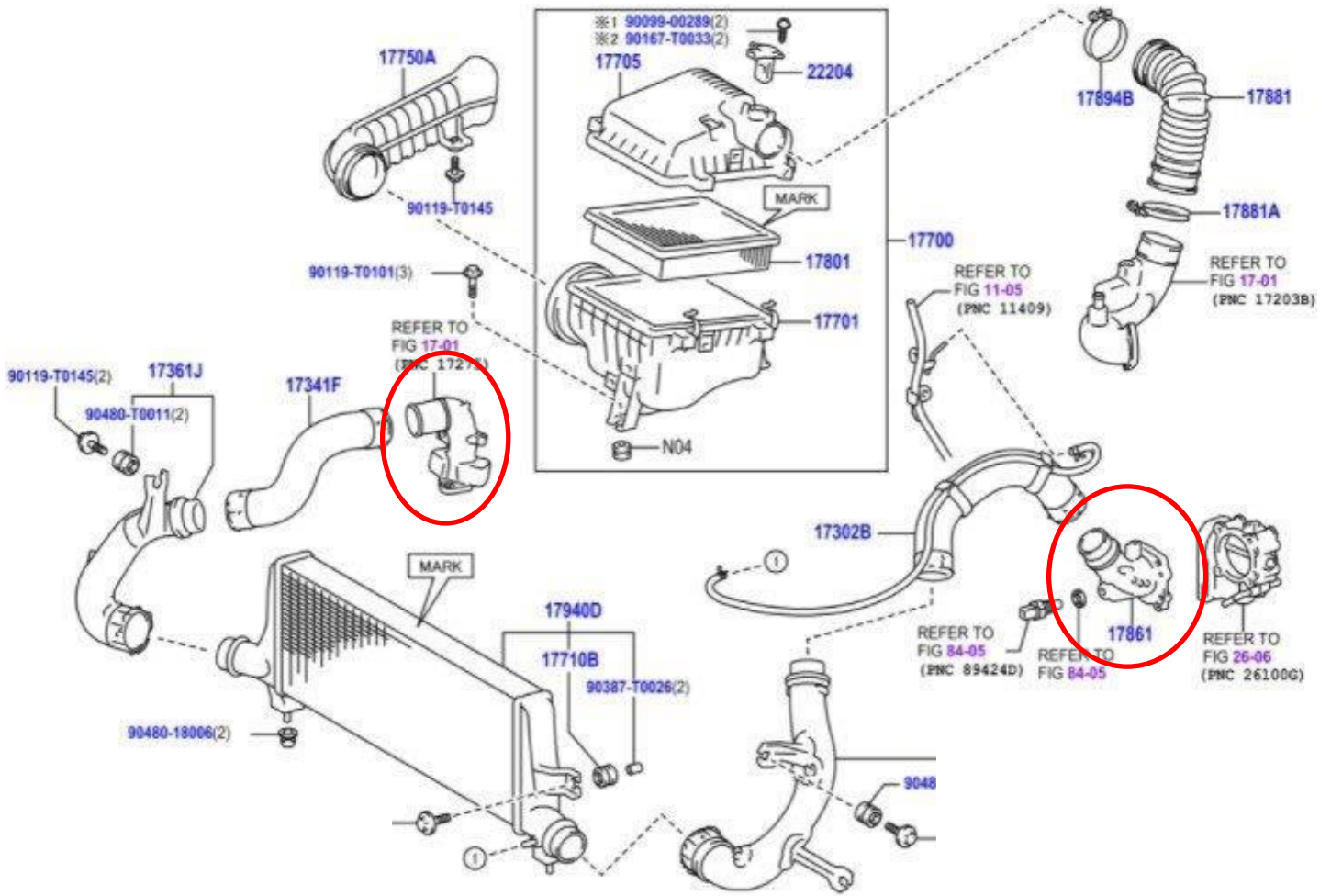
INSTALL M5 BOLTS TO TOP BRACKET.

INSTALL 2 1/2" STRAIGHT SILICONES TO INTERCOOLER. PLACE HOSE CLAMPS IN PLACE READY.

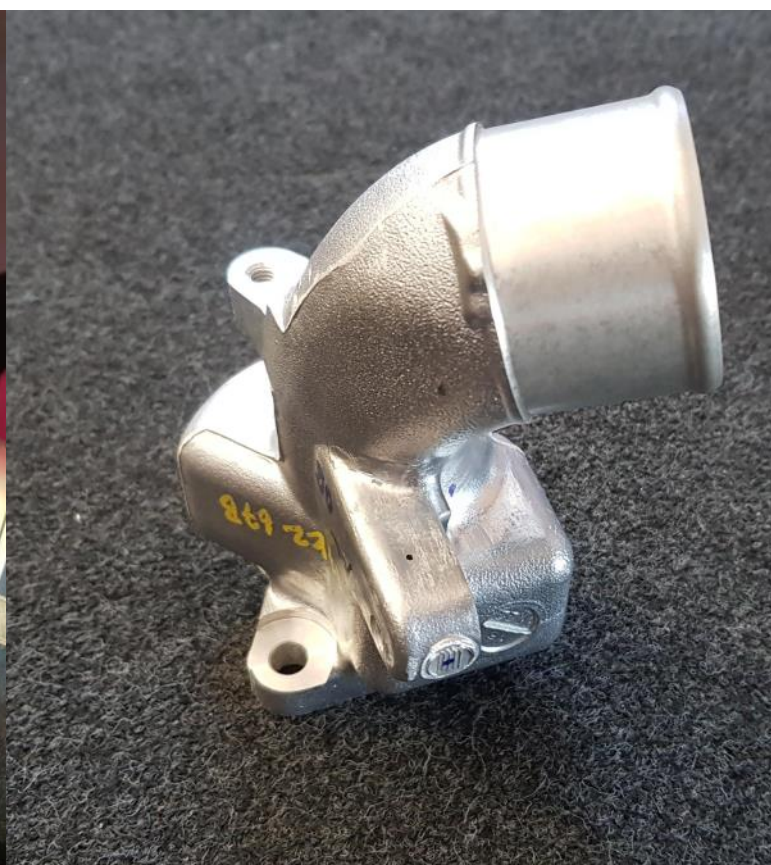
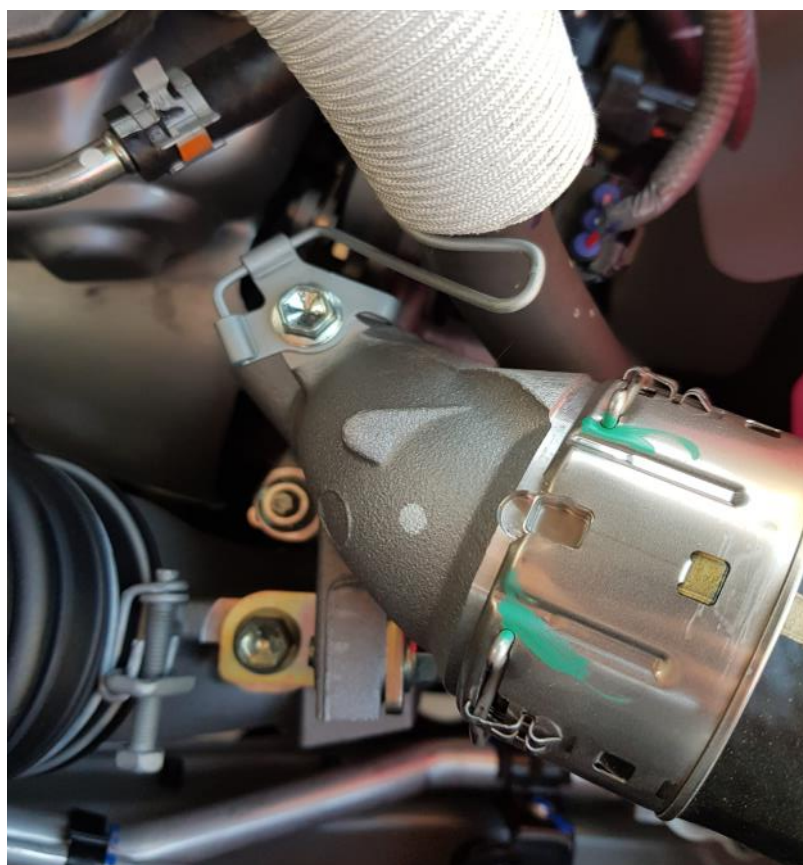
INSTALL SUPPLIED FITTING FOR OIL SCAVENGING HOSE.

REMOVE CAST ADAPTOR FROM INTAKE MANIFOLD AND INSTALL SUPPLIED MANIFOLD ADAPTOR. INSTALL 2 1/2" HUMP SILICONE TO MANIFOLD ADAPTOR.





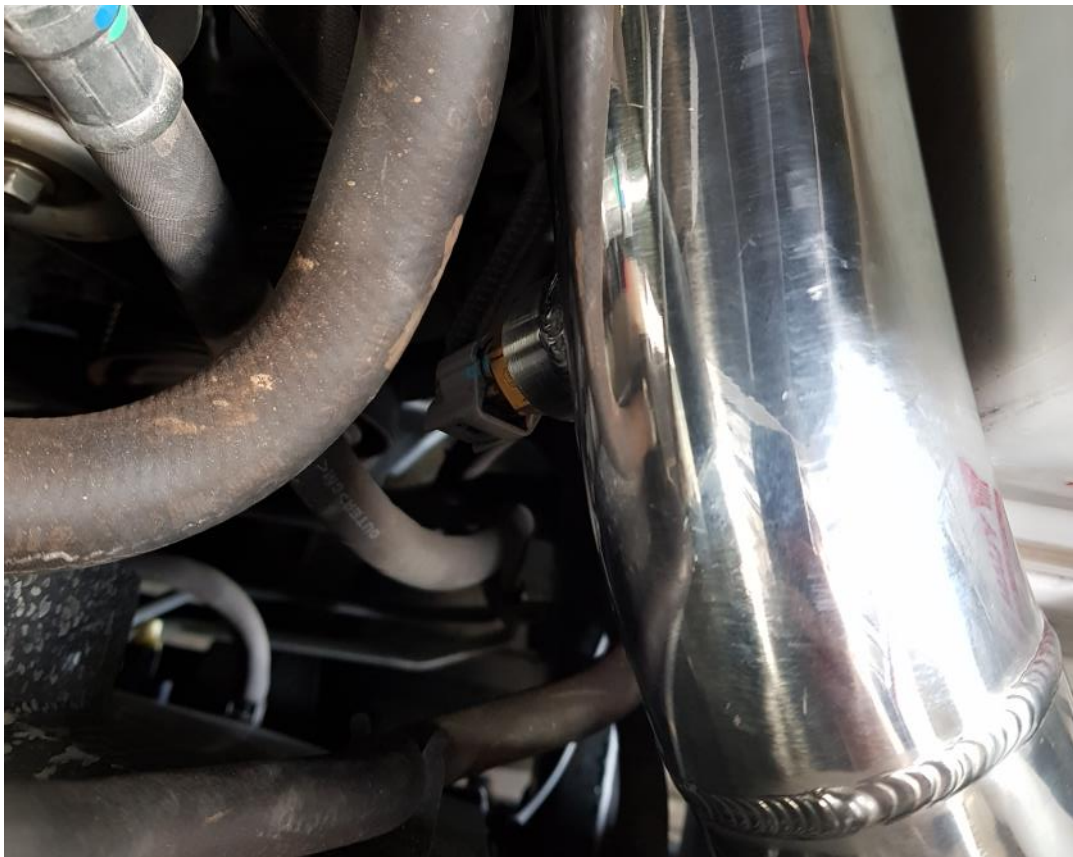
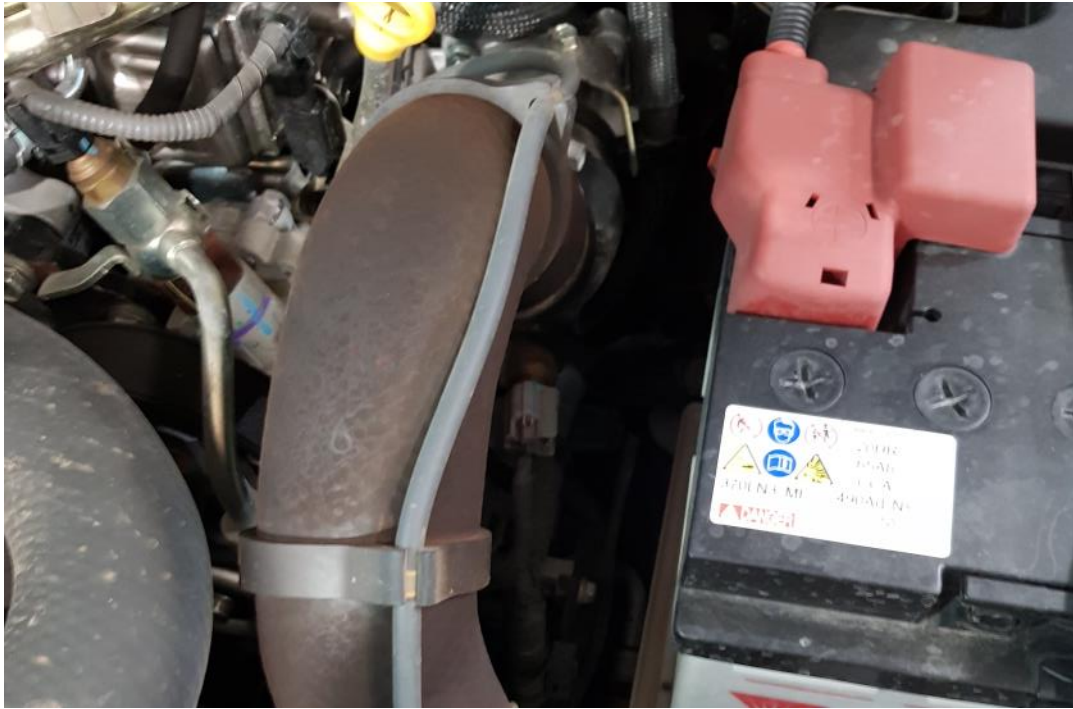
REMOVE TURBO OUTLET PIPE AND REPLACE WITH SUPPLIED ADAPTOR. 2- 2 1/2" 90 DEGREE REDUCER TO THE TURBO OUTLET. TIGHTEN HOSE CLAMPS.





REMOVE TEMP SENSOR FROM FACTORY PIPE AND INSTALL IN THE MANIFOLD PIPE.

REMOVE SMALL OIL SCAVANGE HOSE AND LINE MOUNTS FROM FACTORY HOSE AND INSTALL ON THE MANIFOLD PIPE.

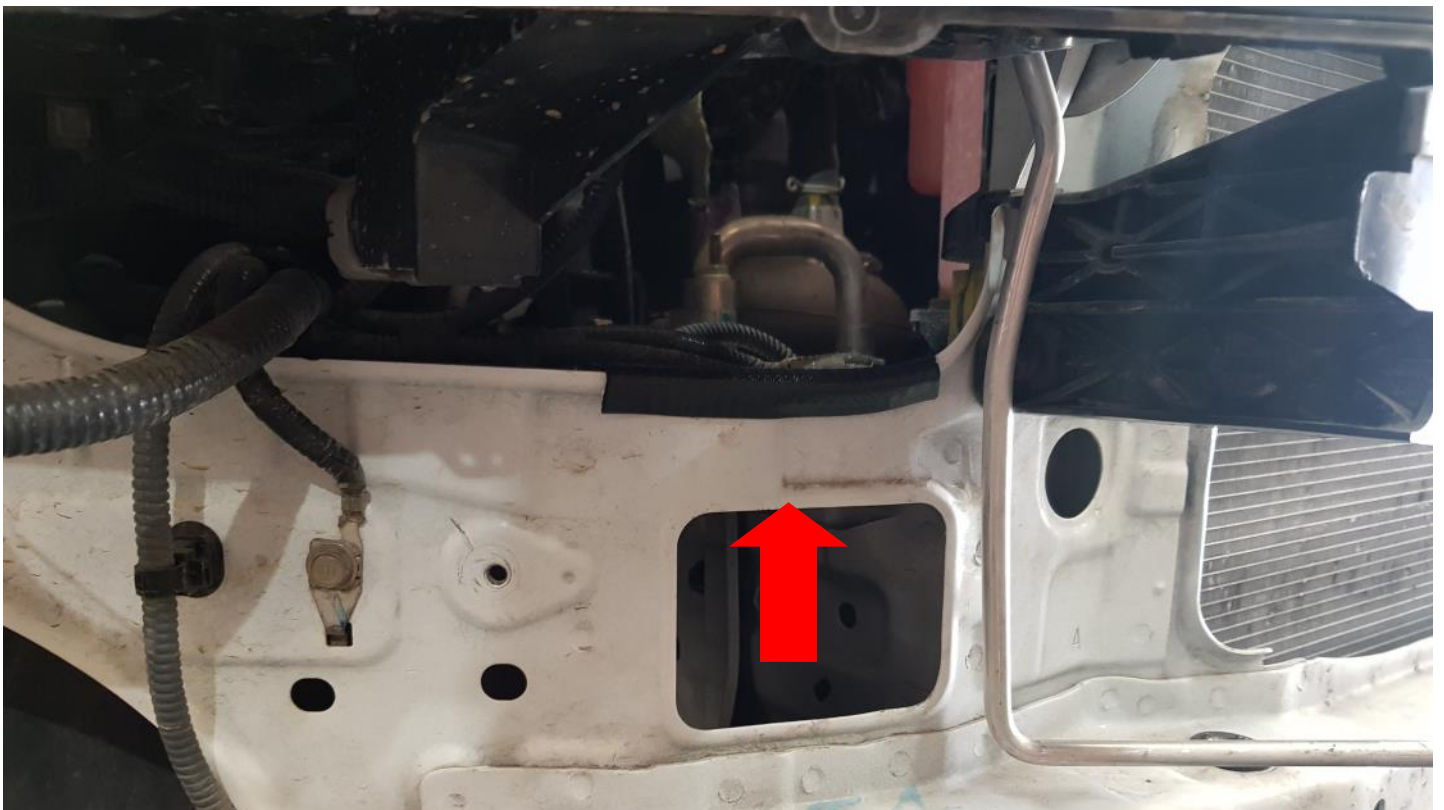




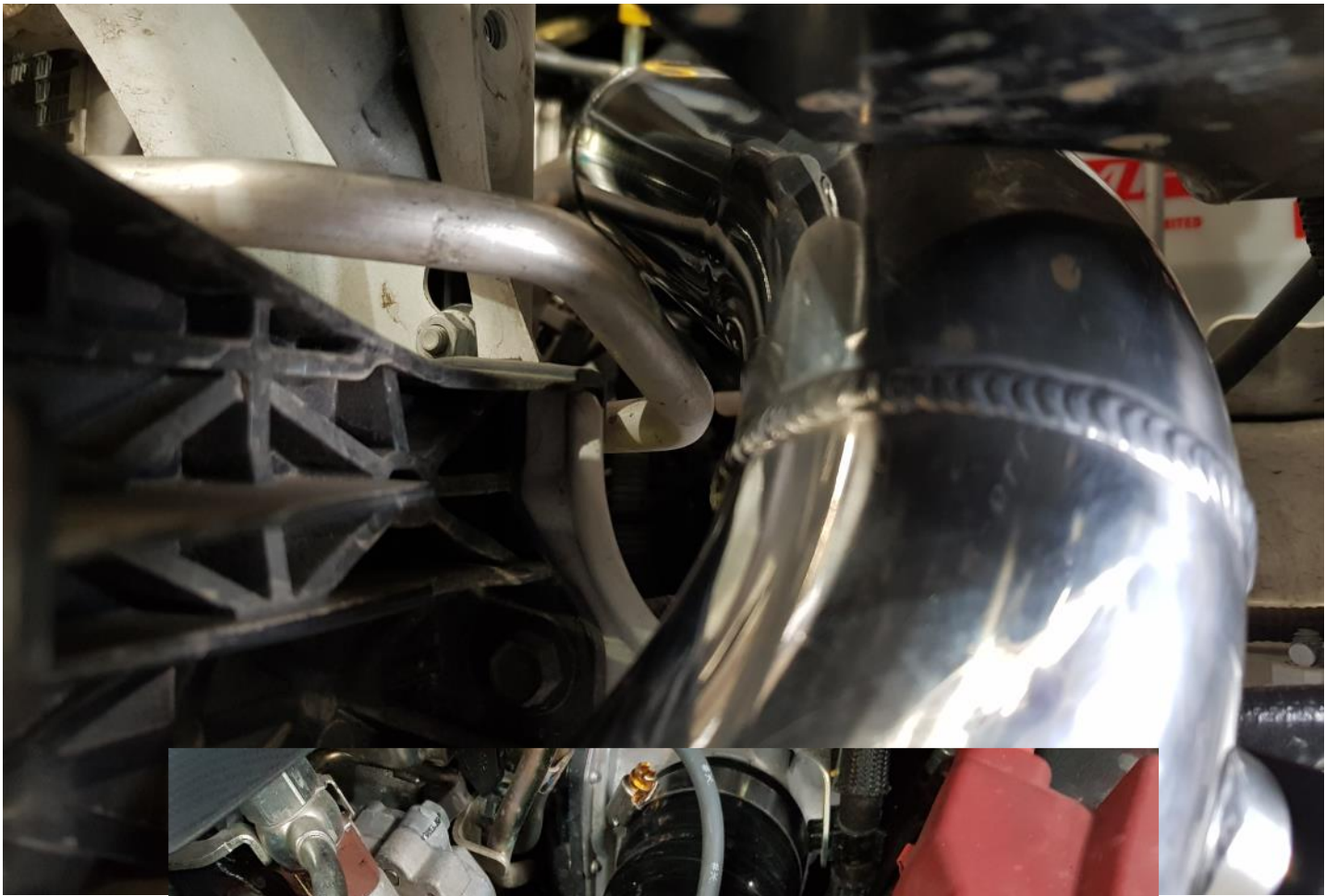
INSTALL PINCH WELD AS SHOWN.

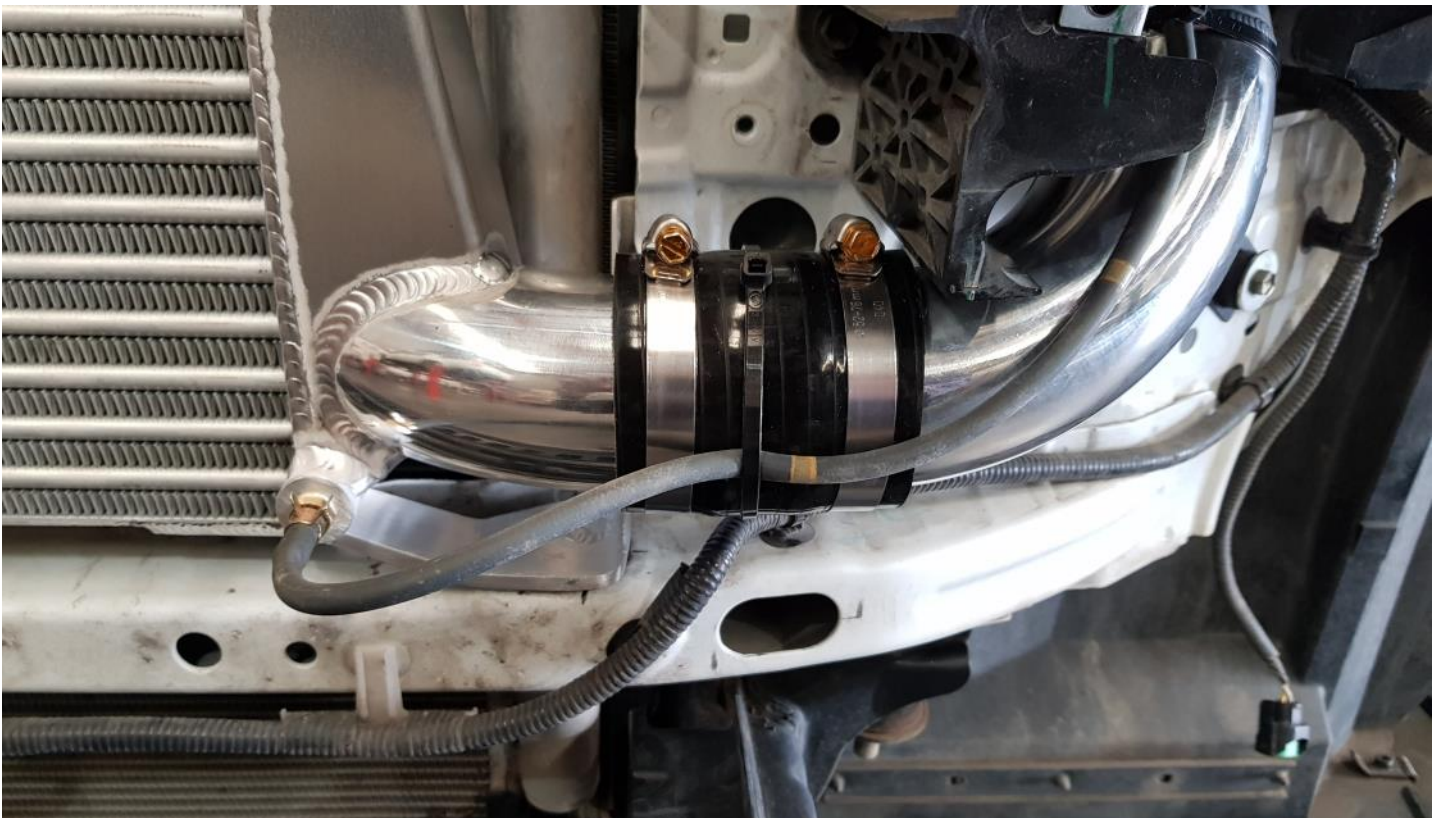
INSTALL TURBO SIDE AND MANIFOLD PIPES. INSTALL PIPE MOUNTING BRACKETS USING THE FACTORY RUBBERS AND CRUSH TUBES FROM THE FACTORY PIPE WORK. LEAVE LOOSE.

CONNECT TEMP SENSOR







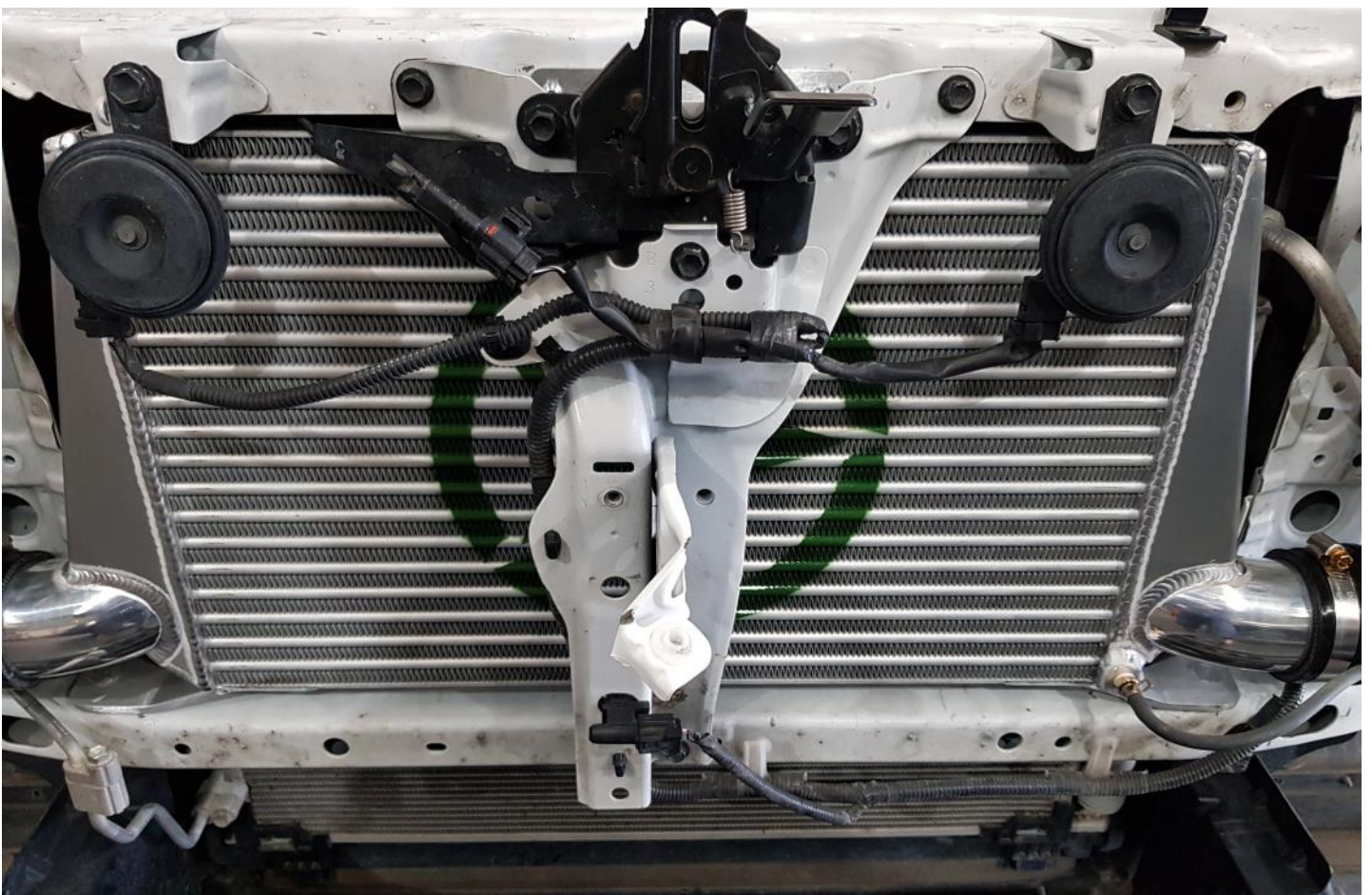


MANOEUEVER PIPE WORK AND AIRCON LINES SO THERE IS CLEARANCE TO THE LIGHTS AND BODY WORK. WHEN HAPPY WITH THE FITMENT TIGHTEN PIPE SUPPORT BRACKETS AND HOSE CLAMPS.

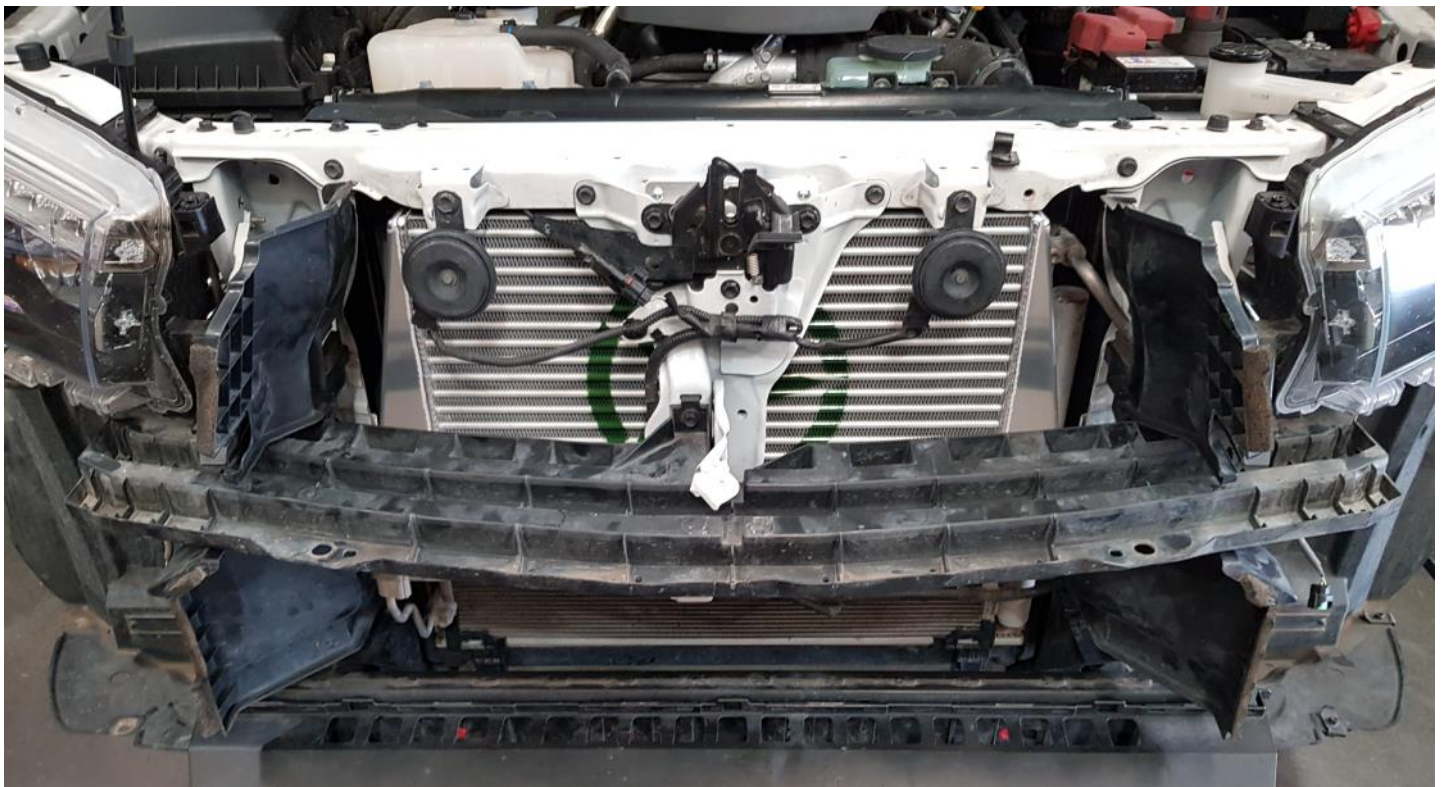
ORIENTATE HOSE SLAMPS SO THEY CAN BE CHECKED PERIODICALLY.

REINSTALL HORNS, BONNET LATCH AND SUPPORT.

CONNECT OIL SCAVENGE HOSE TO INTERCOOLER.



TRIM DUCTING BOTH SIDES TO CLEAR NEW PIPE WORK AND INSTALL. REINSTALL PLASTIC SUPPORT .



REINSTALL BUMPER AND GRILL.

TEST DRIVE VEHICLE

AFTER A WEEK OF DRIVING RETENSION THE HOSE CLAMPS AND CHECK AT REGULAR SERVICE INTERVALS.

IF PIPE WORK IS REMOVED THE OUTLETS AND INSIDE ENDS OF THE SILICONES NEED TO BE CLEANED WITH A SOLVENT LIKE BRAKE CLEANER SO NO OIL IS PRESENT BEFORE REINSTALLING.

