



HOLDEN COLORADO RG 2.8LT

2014-2020

INTERCOOLER UPGRADE

 **W A R N I N G**

WARNING: Failure to follow this procedure will void your warranty.

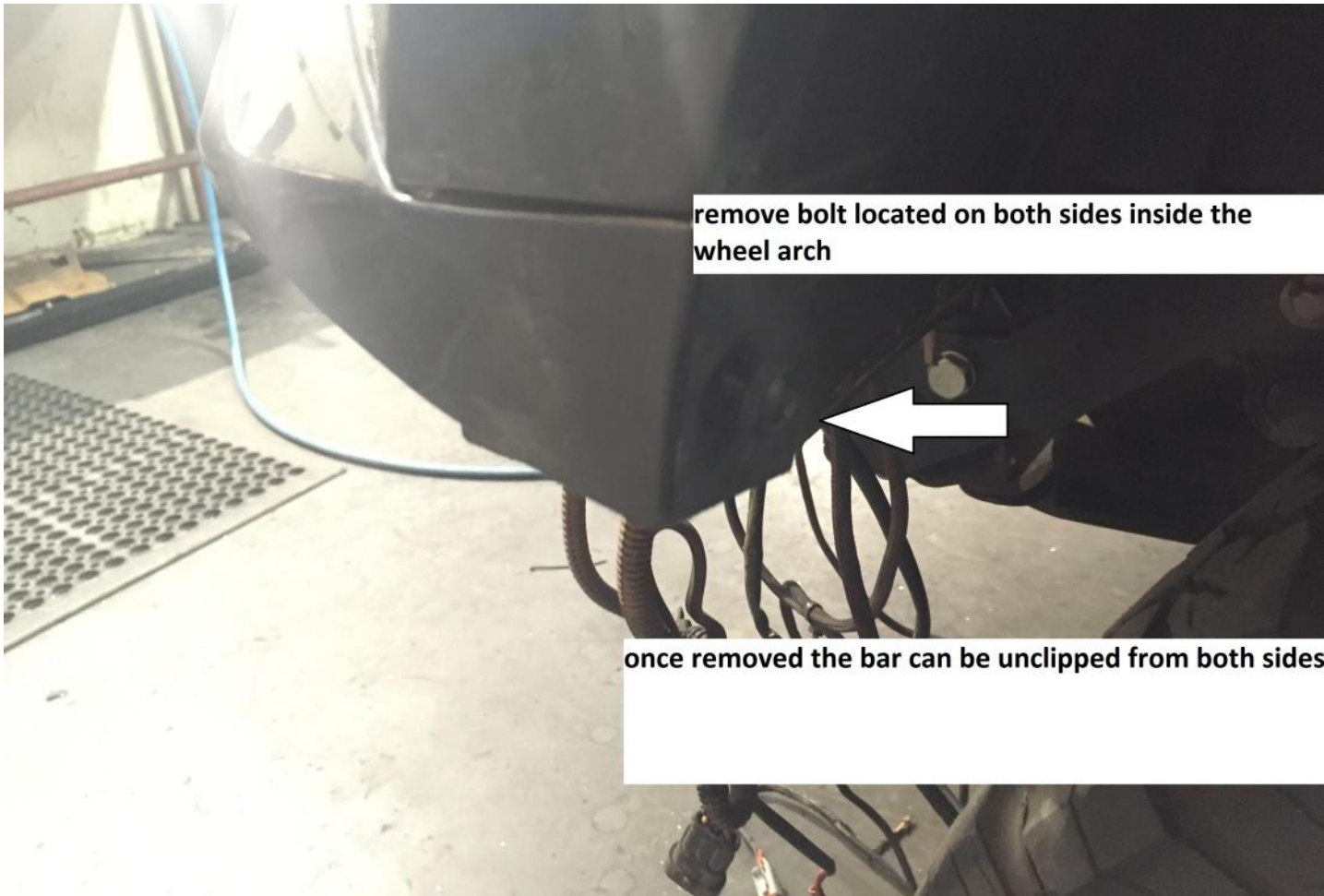
- Do not use this product in any other motor vehicle for which it is not designed.
- Do not use any other mounting location / method other than described in this instruction.
- It is advisable to seek assistance of another person when installing this product.
- Do not repair or modify this product and / or its mounting bracket in any way - repair or modification may affect proper operation of the vehicle or cause destruction of property.
- Be sure to clean and remove any loose debris before removing pipe work as debris entering the engine could be detrimental to the engine and or components



**For the removal for the factory intercooler.
If fitted with a bull bar it must be removed.**



undo all bolts as shown



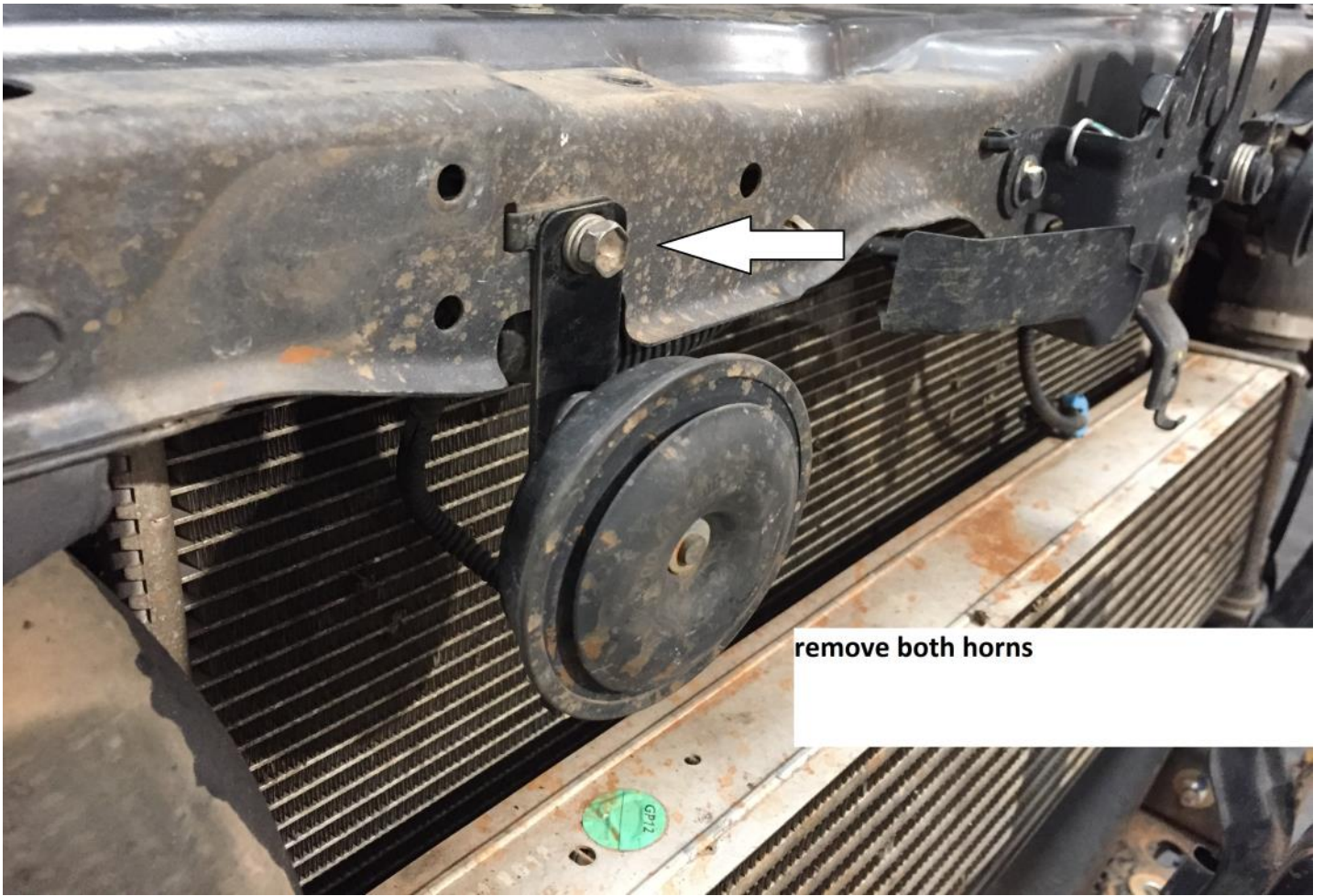
remove bolt located on both sides inside the wheel arch



once removed the bar can be unclipped from both sides







remove both horns



remove nuts located on the back of the horn

refit the horn in the lower hole as shown



both horns should be now relocated as shown



remove factory clamp
new clamps are supplied

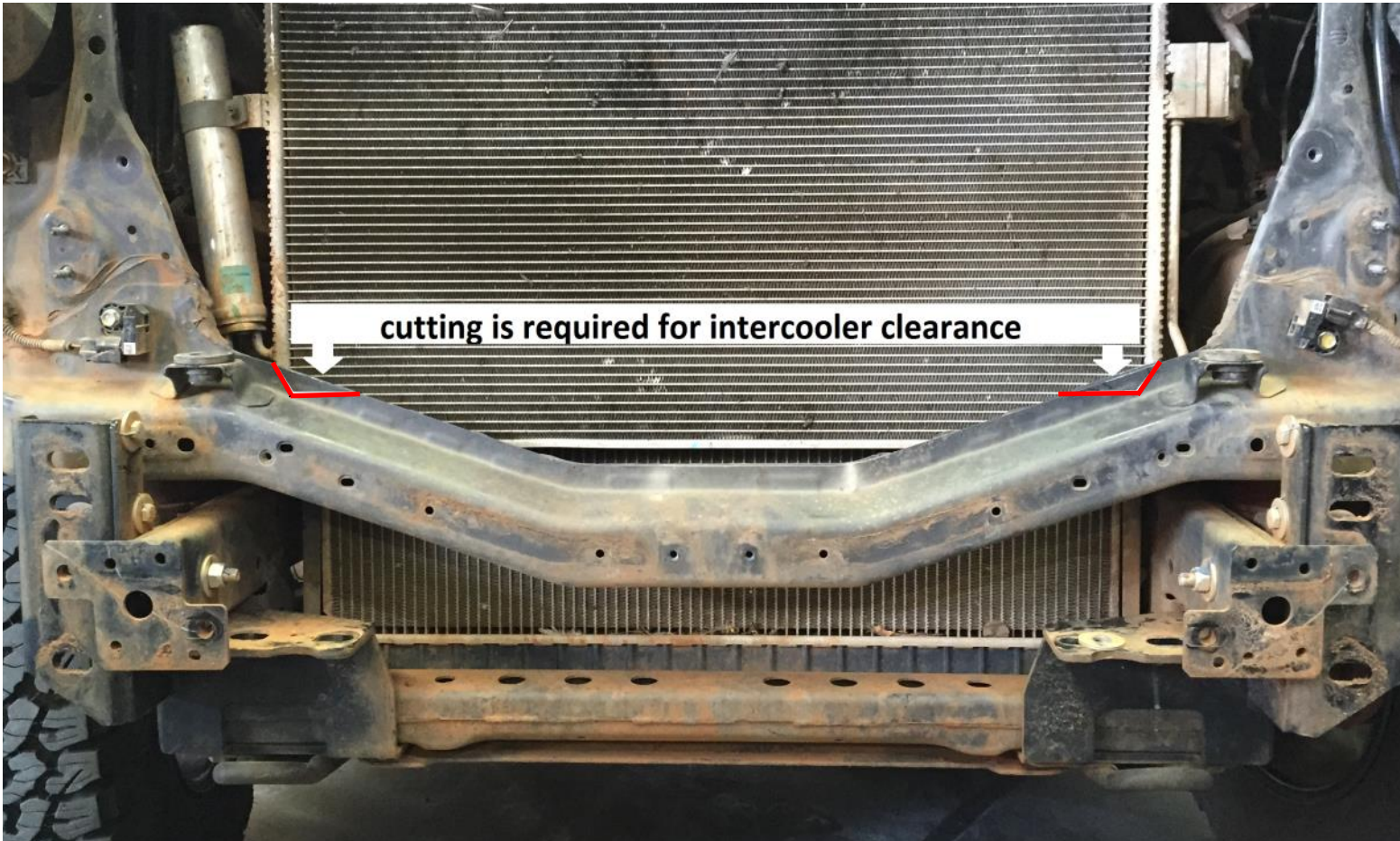


once the driver's side hose is removed one side must be shortened

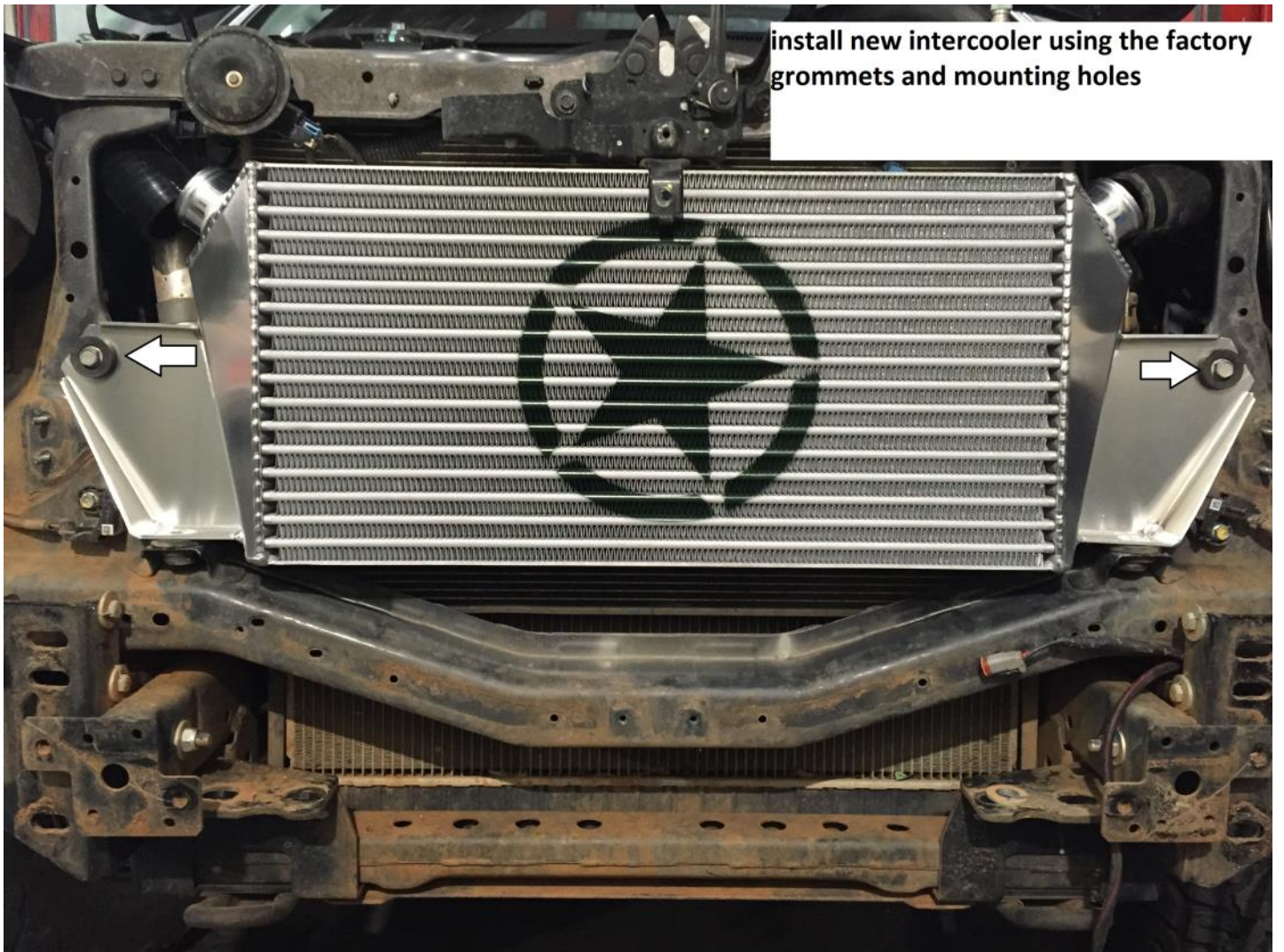


110mm



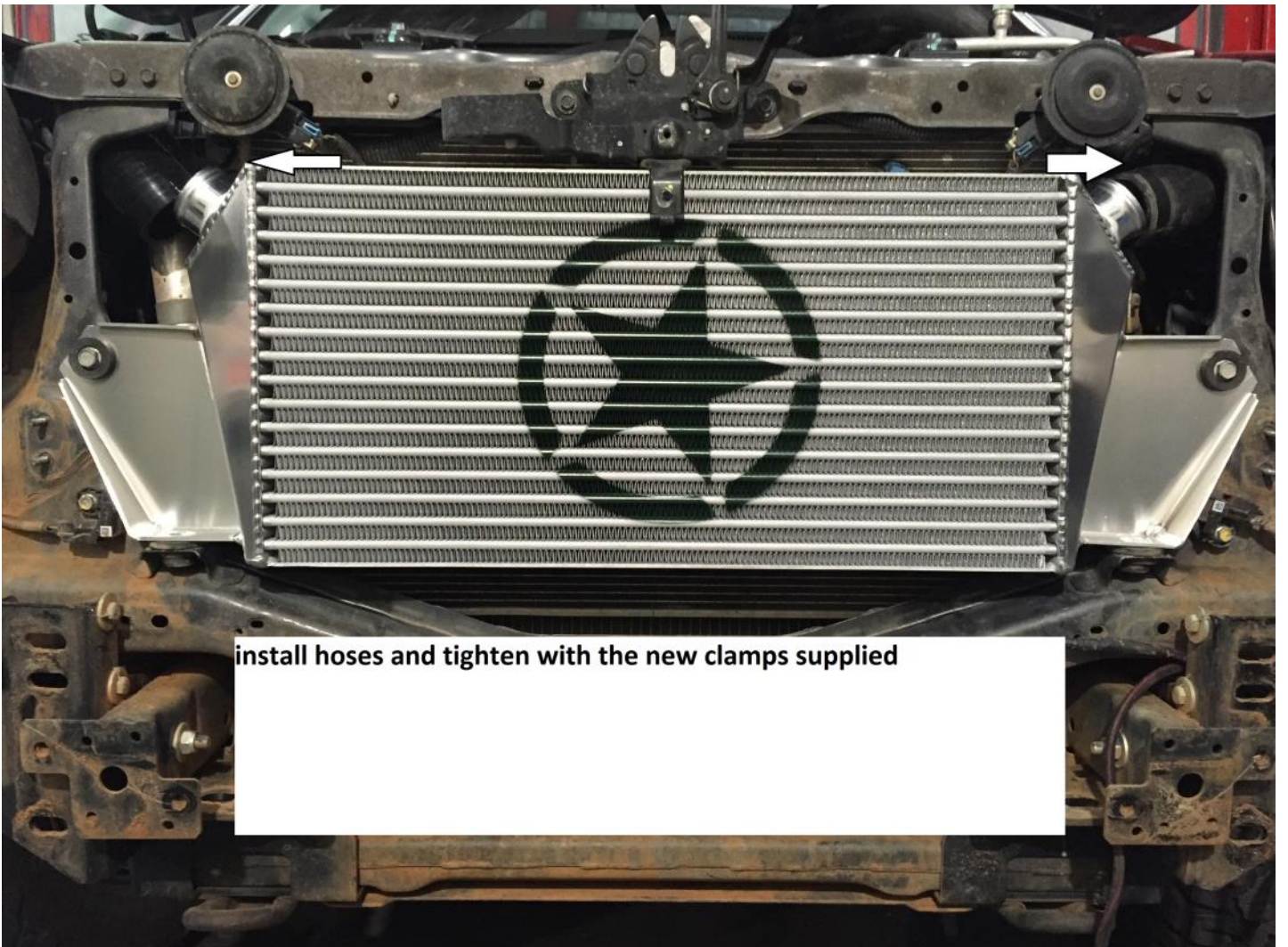


cutting is required for intercooler clearance



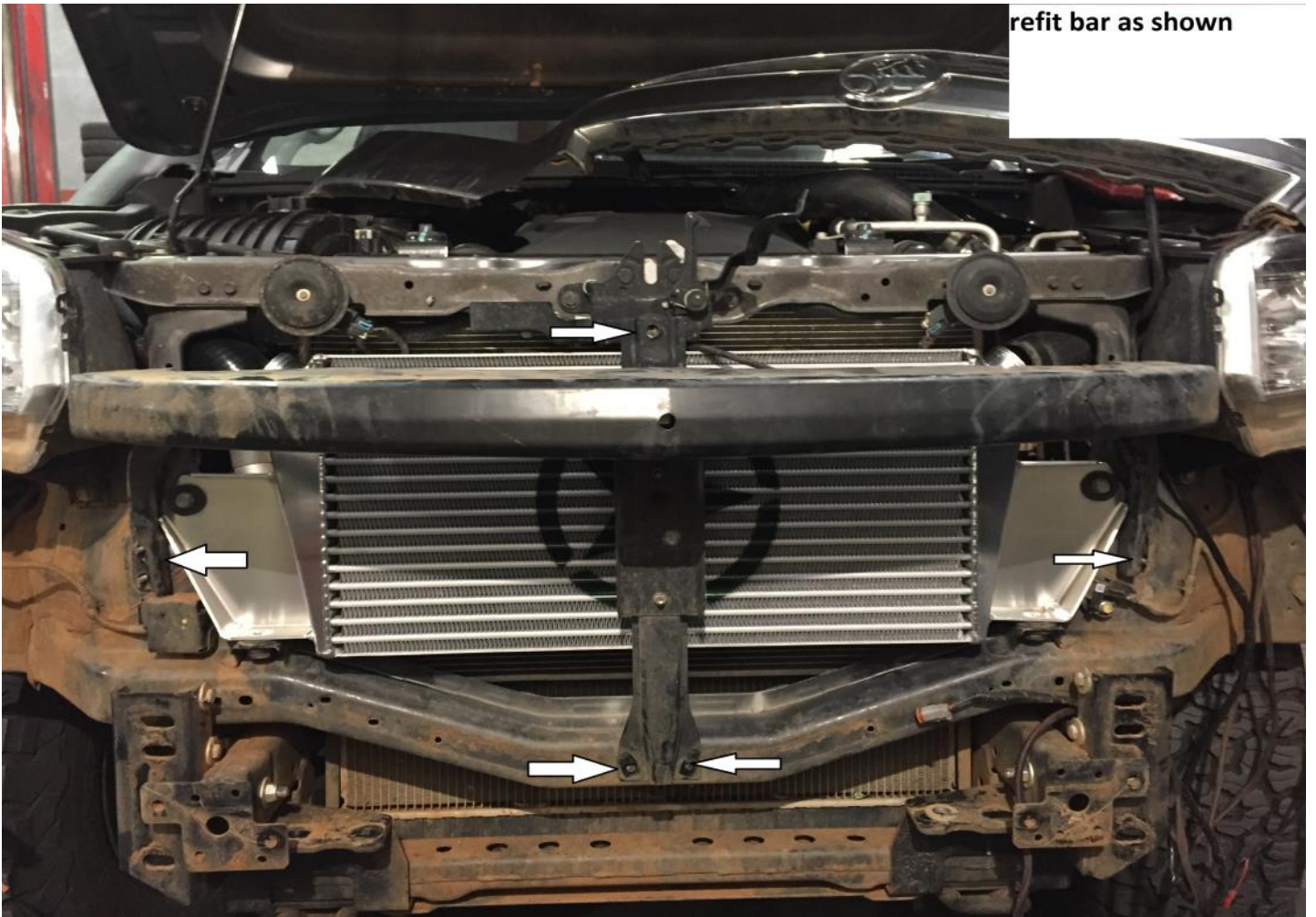
install new intercooler using the factory grommets and mounting holes

refit hose on driverside pipe as shown

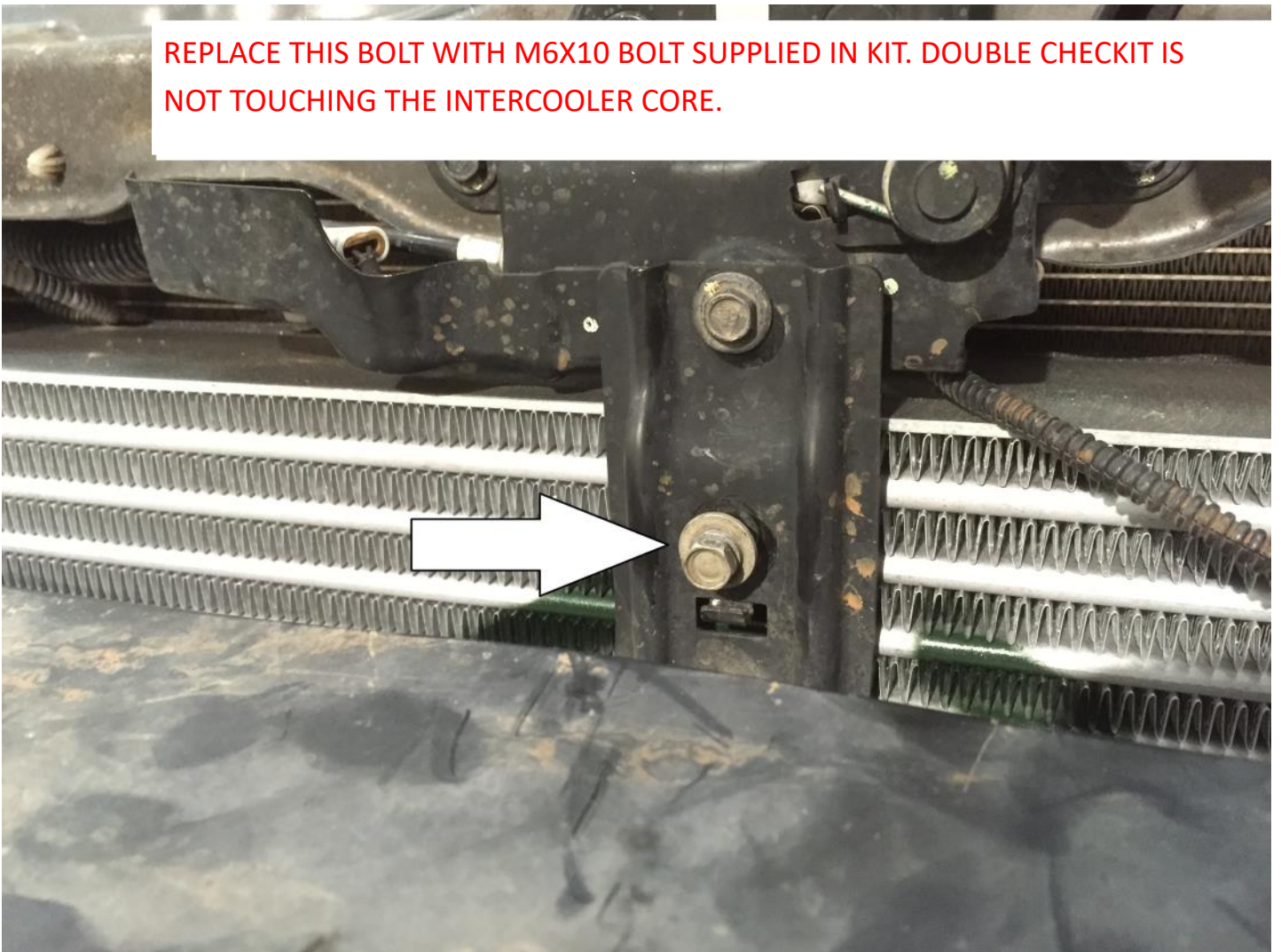


install hoses and tighten with the new clamps supplied

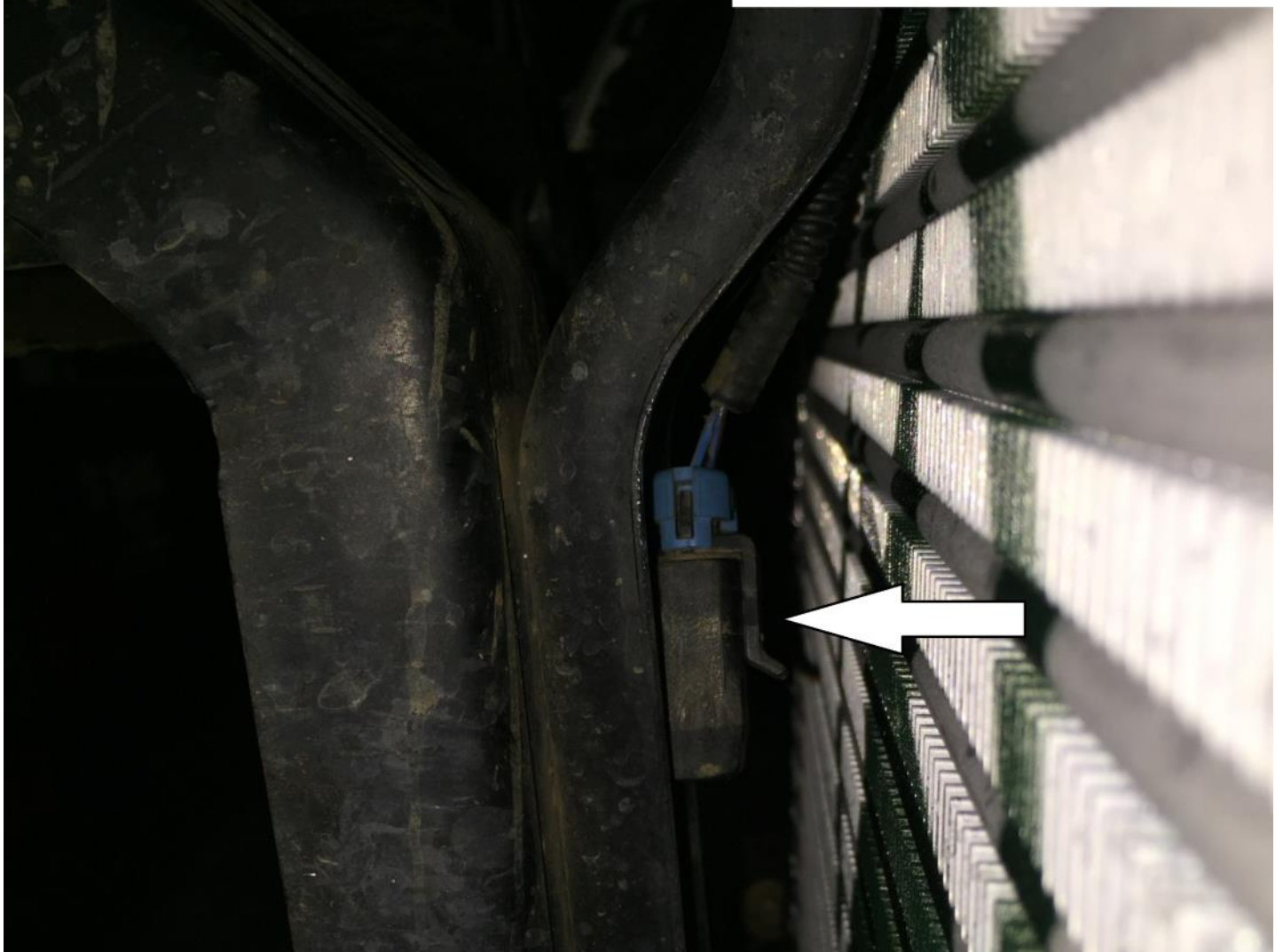
refit bar as shown



REPLACE THIS BOLT WITH M6X10 BOLT SUPPLIED IN KIT. DOUBLE CHECK IT IS NOT TOUCHING THE INTERCOOLER CORE.



connect plug as shown



refit support bars



install panel as shown



once bar is clipped back in
tighten bolts as shown



refit both bolts located inside the wheel arch on both sides



WITH THE INSTALL COMPLETE TEST DRIVE THE VEHICLE. AFTER 100KM OF DRIVING CHECK THE NEW HOSE CLAMPS AND RE TENSION IF NECESSARY.

INSPECT AT REGULAR SERVICE INTERVALS.