



NISSAN PATROL GQ 4.2 PREMIUM LOW MOUNT AND HIGHMOUNT FITTING INSTRUCTIONS

W A R N I N G

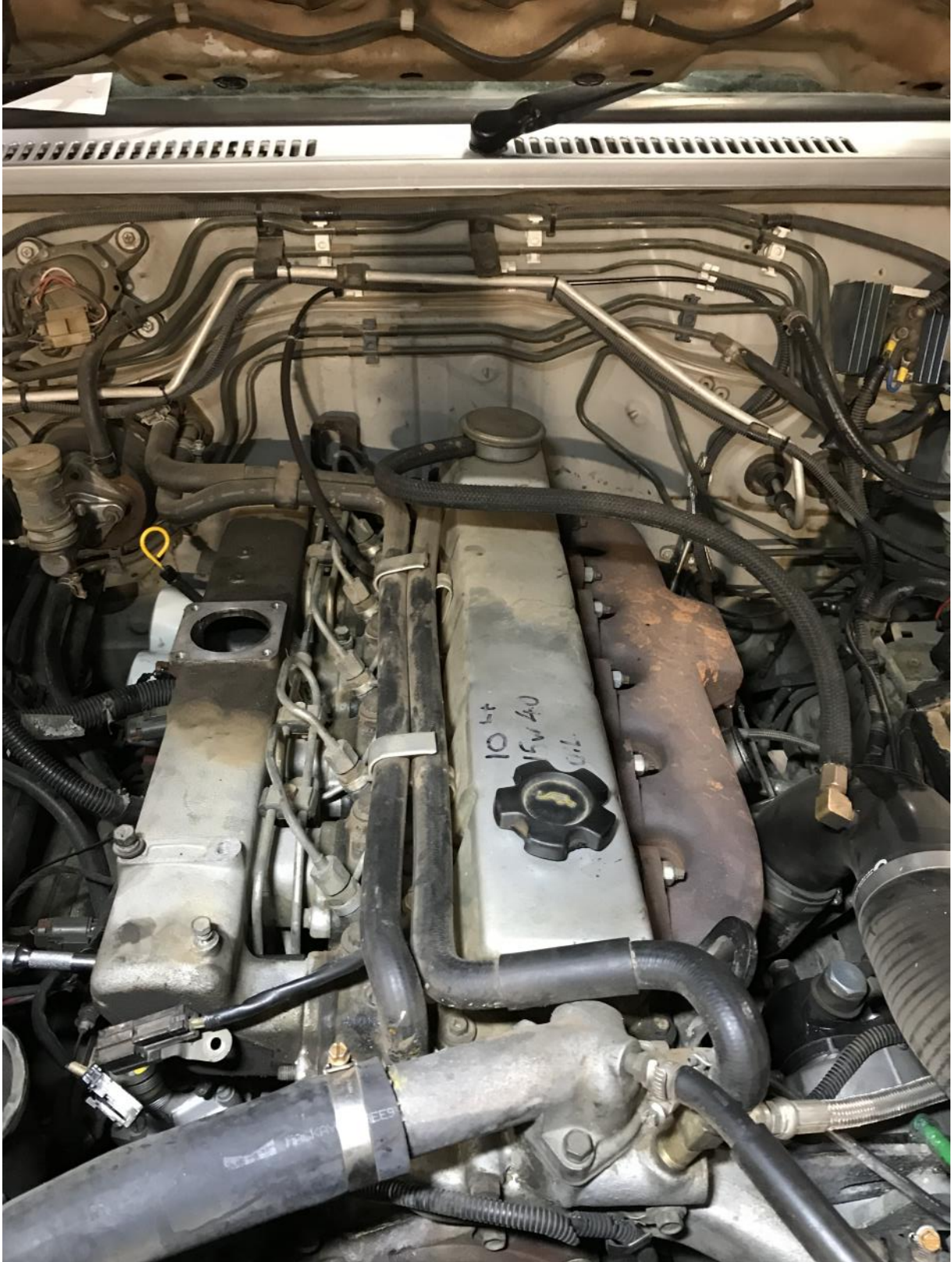
WARNING: Failure to follow this procedure will void your warranty.

- Do not use this product in any other motor vehicle for which it is not designed.
- Do not use any other mounting location / method other than described in this instruction.
- It is advisable to seek assistance of another person when installing this product.
- Do not repair or modify this product and / or its mounting bracket in any way - repair or modification may affect proper operation of the vehicle or cause destruction of property.
- Be sure to clean and remove any loose debris before removing pipe work as debris entering the engine could be detrimental to the engine and or components

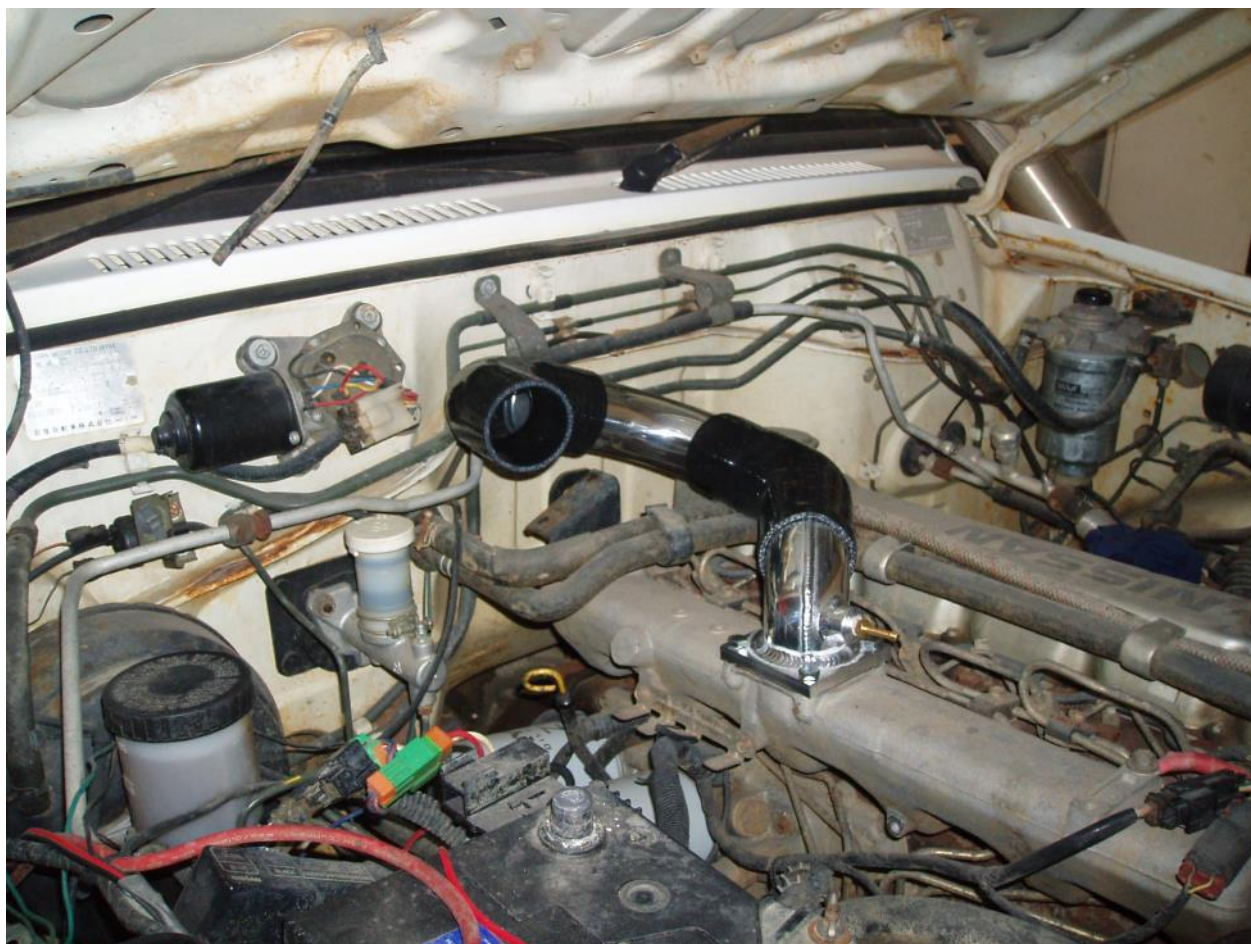
REMOVE SOUND DEADENING FROM THE BONNET USING A TRIM REMOVAL TOOL.

DISCONNECT WASHER HOSE.

REMOVE CROSSOVER PIPE/ AIRBOX / TURBO PIPES.

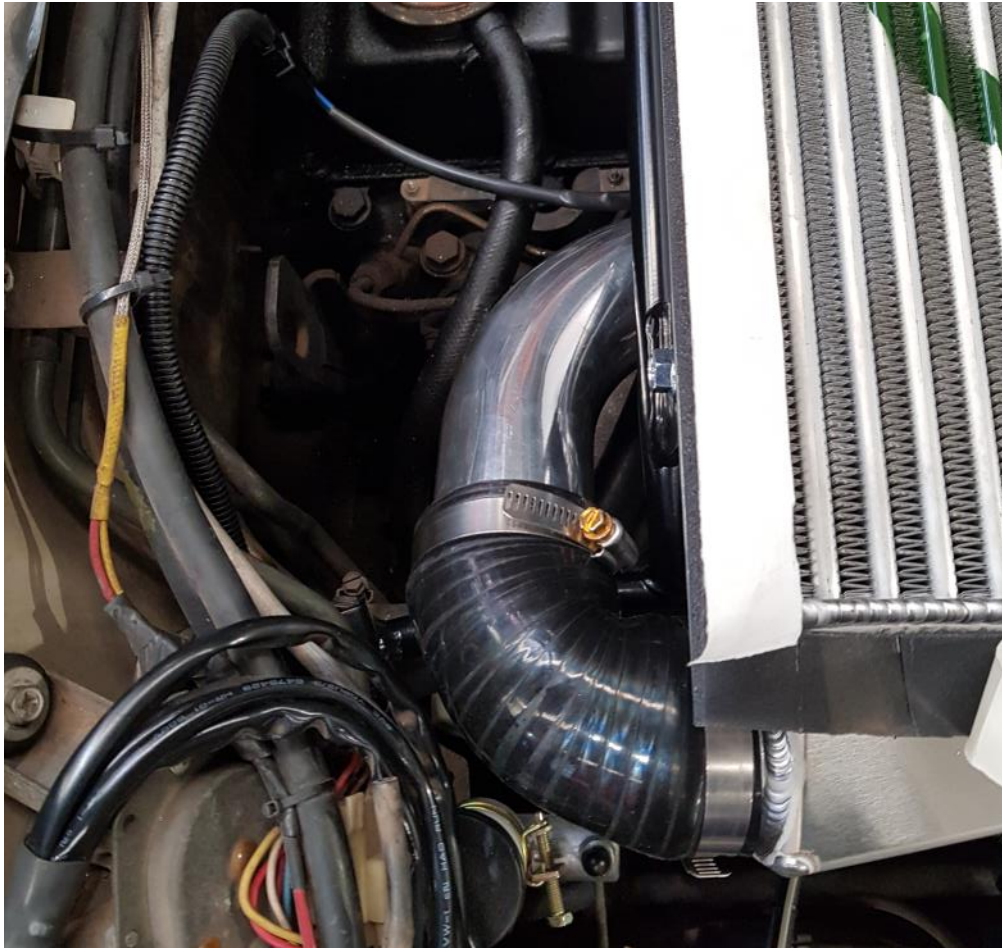


CLEAN THE MATING SURFACE ON THE INTAKE MANIFOLD AND INSTALL INLET ADAPTOR SUPPLIED AS SHOWN USING A SILICONE SEALANT (NOT SUPPLIED). INSTALL 2 1/4" PIPEWORK AS SHOWN LEAVING LOOSE. IF APPLICABLE RUN A HOSE FOR BOOST REFERENCE TO THE FUEL PUMP. IF NOT BLANK FITTING.

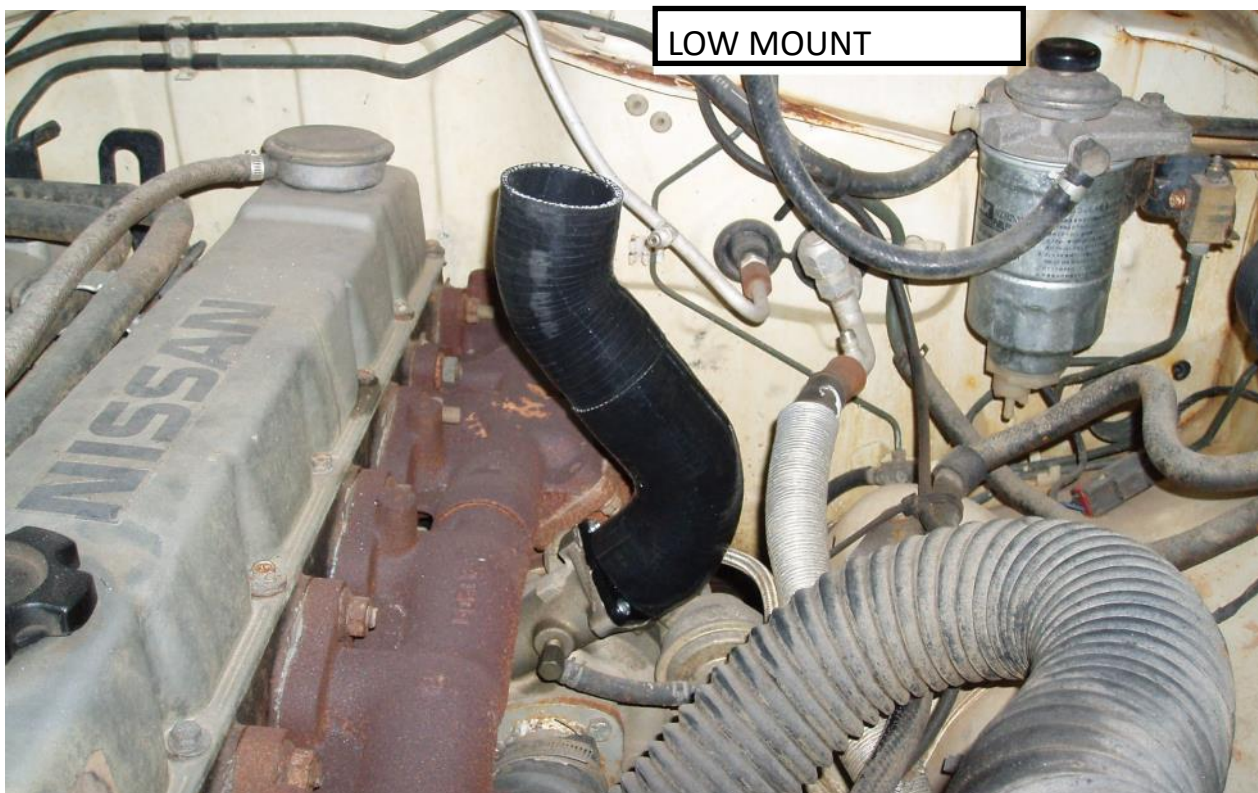


INSTALL THE INTERCOOLER BY FIRST LOOSENING THE CLAMPS ON THE REAR OF THE FRAME, UNDO THE TOP RADIATOR SUPPORT BOLTS. SLIDE THE REAR OF THE INTERCOOLER FRAME OVER THE LIP ON THE FIREWALL AS SHOWN. LOCATE THE FRONT OF THE FRAME WITH THE TOP RADIATOR MOUNTS AND INSTALL BOLTS FINGER TIGHT. CONFIRM LOCATION OF THE PIPEWORK ALREADY INSTALLED. REMOVE INTERCOOLER AND TIGHTEN HOSE CLAMPS. REINSTALL THE INTERCOOLER AND TIGHTEN FRONT BOLTS AND REAR INTERCOOLER FRAME CLAMPS TO THE FIREWALL. INSTALL PIPEWORK TO THE INTERCOOLER AND TIGHTEN HOSE CLAMP.





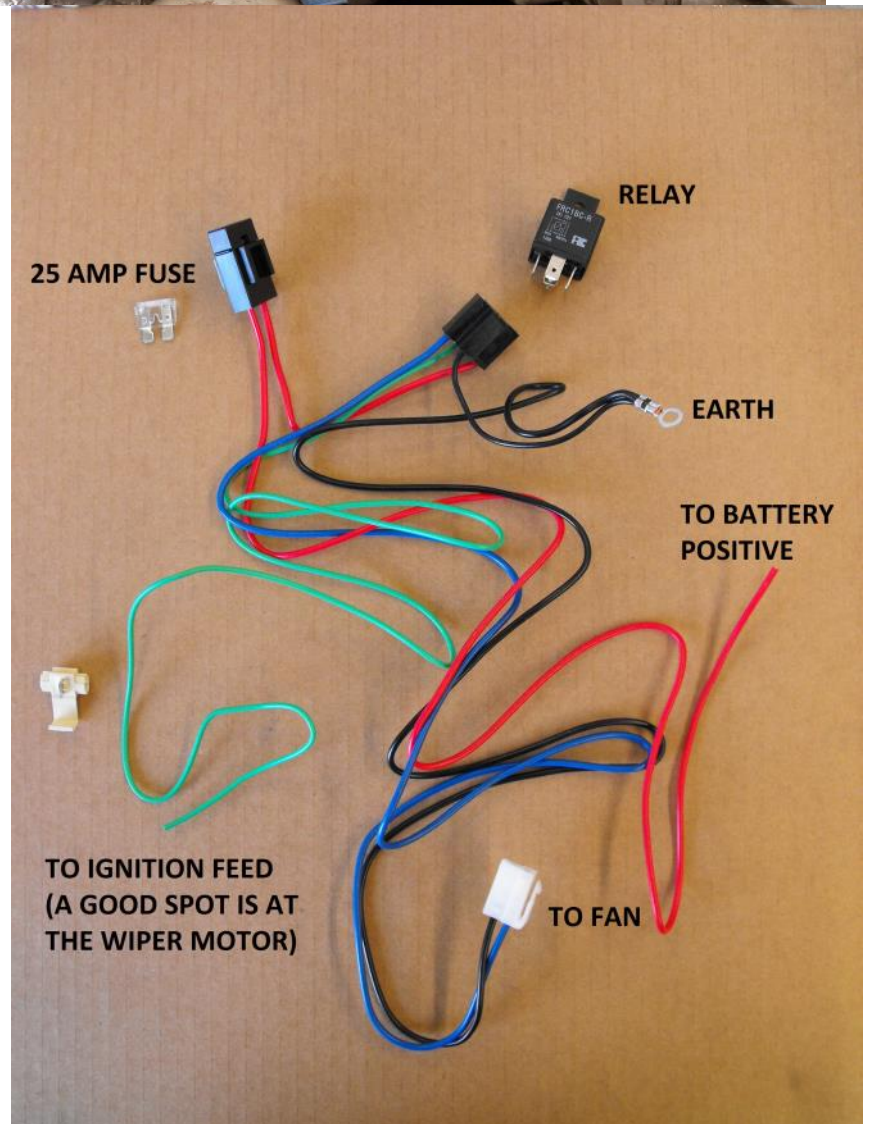
FOR LOW MOUNT TURBO SETUPS TRIM SUPPLIED 2" SILICONES AS SHOWN AND INSTALL USING JOINER AND HOSE CLAMPS. FOR HIGH MOUNT SETUPS CUT AND TRIM SILICONES AS SHOWN USING 2" JOINER AND HOSE CLAMPS. PLEASE NOTE HIGHMOUNT SETUPS MAY VARY TO THE PICTURE SHOWN.



HIGHMOUNT



WITH INTERCOOLER INSTALLED
WIRE THE FAN AS SHOWN. WE
RECOMMEND RUNNING THE FAN
OFF THE IGNITION CURCUIT. A
GOOD PLACE FOR AN IGNITION
FEED ON NISSAN PATROLS IS THE
WIPER MOTOR.

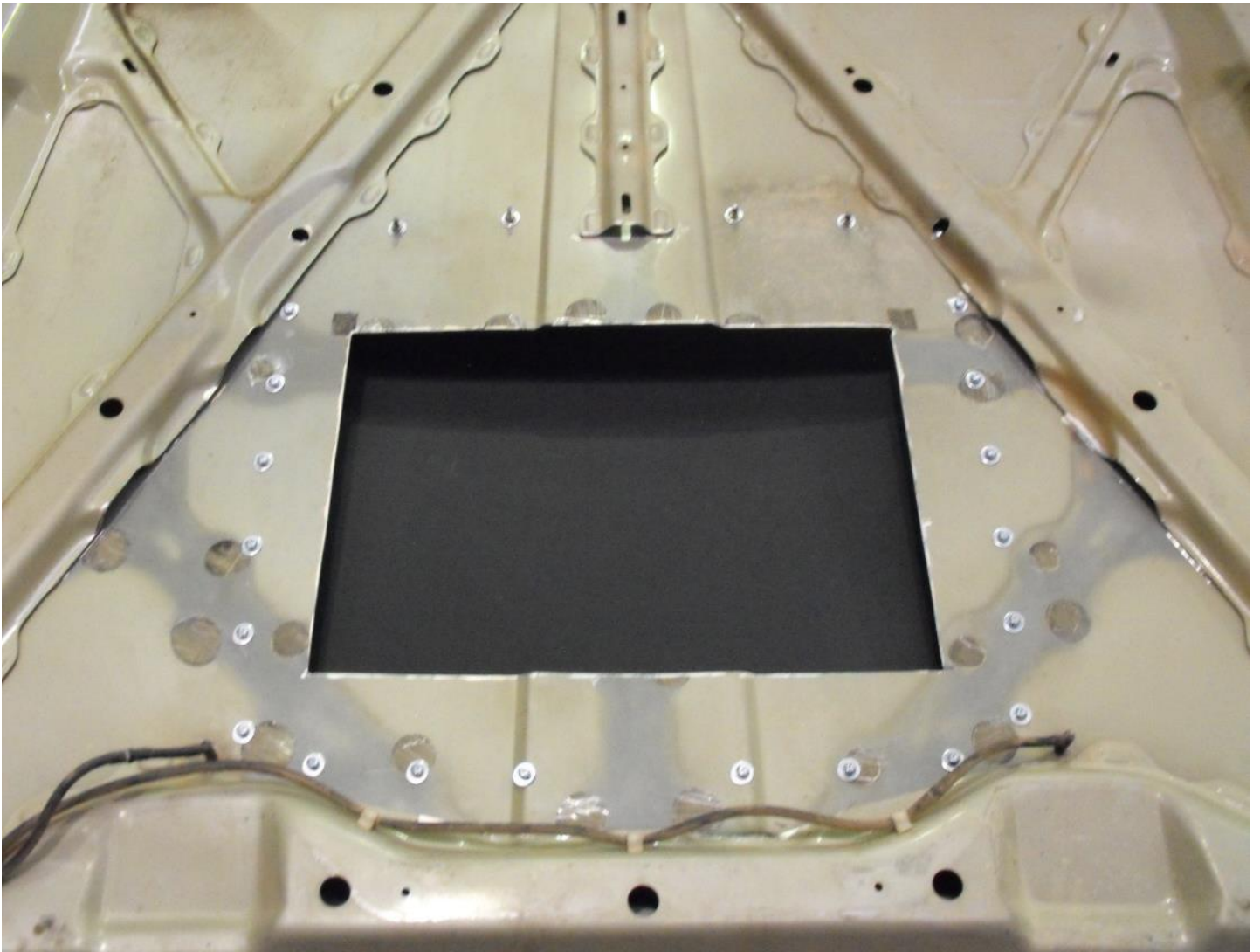


WITH THE INTERCOOLER INSTALLED PLACE SUPPLIED FOAM SQUARES AS SHOWN STICKY SIDE UP IN THE OUTSIDE CORNERS OF THE FOAM (ULTIMATE SHOWN). THE CUT OUT FOR THE INTERCOOLER SHOULD ONLY BE THE SIZE OF THE INTERCOOLER CORE ITSELF. IN THIS INSTANCE THE CUTOUT WILL BE TO THE INSIDE OF THE FOAM SQUARES. GENTLY CLOSE BONNET SO THE FOAM SQUARES TRANSFER TO THE BONNET. REMOVE BONNET.



READ THE SCOOP FITING INSTRUCTIONS SUPPLIED WITH THE SCOOP (ALSO BELOW). CUT OUT THE UNDERBONNET WEBBING AS SHOWN.

WE POSITION THE SCOOP SO THE INTERNAL LIP OF THE SCOOP IS AT THE REAR EDGE OF THE CUT OUT FOR THE INTERCOOLER (SCOOP WILL BE JUST IN FRONT OF THE WASHER JETS). SIT THE SCOOP ON THE BONNET AND MARK WHERE THE RECESS OF THE BONNET IS FRONT AND REAR ON THE SCOOP. INSTALL THIN FOAM AROUND THE PEREMITER OF THE SCOOP AND THEN TRIM AND INSTALL SMALL INFILL FOAM SUPPLIED.



BONNET SCOOP FITTING INSTRUCTIONS

After fitting the intercooler, use the supplied foam squares to transfer the intercooler hole location to the bonnet. Depending on what intercooler you have place the foam squares sticky side up on the outside corners of the foam or if your intercooler has small angle place them on the outside corners of the core itself. Some packers may be needed.

Remove the bonnet from the vehicle. Double check the measurements of the foam squares against where the intercooler sits. THE HOLE FOR THE INTERCOOLER IS ONLY TO BE THE SIZE OF THE CORE ITSELF. Confirm which side of the foam squares need to be marked by measuring the intercooler core size and comparing the measurement to the foam squares on the bonnet. After confirming the position drill a 3mm pilot hole in each corner. DO NOT cut the hole out for the intercooler yet.

Cut out the appropriate under bonnet webbing as shown in pictures and deburr all edges.
Once finished turn the bonnet over (top of bonnet facing up) and place paper template on the bonnet.

Take measurements from the back edge of the scoop to the rear lip of the bonnet. This location varies on what vehicle you have. Please see below list for the approximate fitting position.

GQ patrol just in front of washer jets (excluding Extreme)

GU PATROL 5-10 mm

60 LANDCRUSIER 80 mm

75/79 LANDCRUISER 140 mm

80 LANDCRUSIER 45 mm

100/105 LANDCRUSIER just in front of washer jets

200 LANDCRUSIER 50mm

Confirm the scoop will not interfere with the intercooler hole cut out by using previously drilled pilot holes and compare to scoop template. When in correct position tape down the edges of the template making sure there are no creases. Drill 3mm pilot holes through the mounting points marked on the scoop template. Going through the bonnet skin and any webbing underneath.

Turn the bonnet over and if applicable drill the holes going through the under-bonnet webbing NOT THE BONNET SKIN to 20mm to allow clearance for the washers. Once the clearance holes are drilled, drill the holes going through the bonnet skin to 8mm. Deburr all holes.

Mark out the hole for the intercooler using the 4 pilot holes as reference points and cut out with a grinder with a 1mm disc, making multiple shallow cuts reduces the likelihood of the paint blistering. Once cut clean up any burrs.

Test fit scoop before painting to make sure all mounting holes are correct. Prime and paint all bare metal.

Attach foam tape supplied to the underside outside edge of the scoop and fit bonnet scoop to bonnet using supplied bolts and nuts. If applicable refit trimmed sound deadening.

Fit bonnet back to car.

PLEASE NOTE WASHER JETS AND SCOOP IN PICTURE IN DIFFERENT LOCATION DUE TO VEHICLE HAVING DIFFERENT SCOOP PRIOR TO FITTING THE CROSS COUNTRY SCOOP AND INTERCOOLER KIT.



WITH SCOOP FITTED RE INSTALL THE BONNET AND CONNECT THE WASHER HOSE. CHECK THE FAN OPERATION. CHECK ALL HOSE CLAMPS AND FASTENERS ARE TIGHT AND TEST DRIVE THE VEHICLE.

AFTER A WEEK OF DRIVING RE TENSION THE HOSE CLAMPS AND CHECK AT REGULAR SERVICE INTERVALS. IF THE INTERCOOLER IS REMOVED CLEAN THE PIPE OUTLETS AND INSIDE THE ENDS OF THE SILICONE WITH BRAKE CLEANER BEFORE REINSTALLING.

PLEASE DON'T HESITATE TO CALL CROSS COUNTRY 4X4 ON 08 8357 5993 IF YOU HAVE ANY QUESTIONS REGARDING THE INSTALL.