



TOYOTA LANDCRUISER 80 SERIES 1HZ/1HDT ULTIMATE INTERCOOLER INSTRUCTIONS

WARNING

WARNING: Failure to follow this procedure will void your warranty.

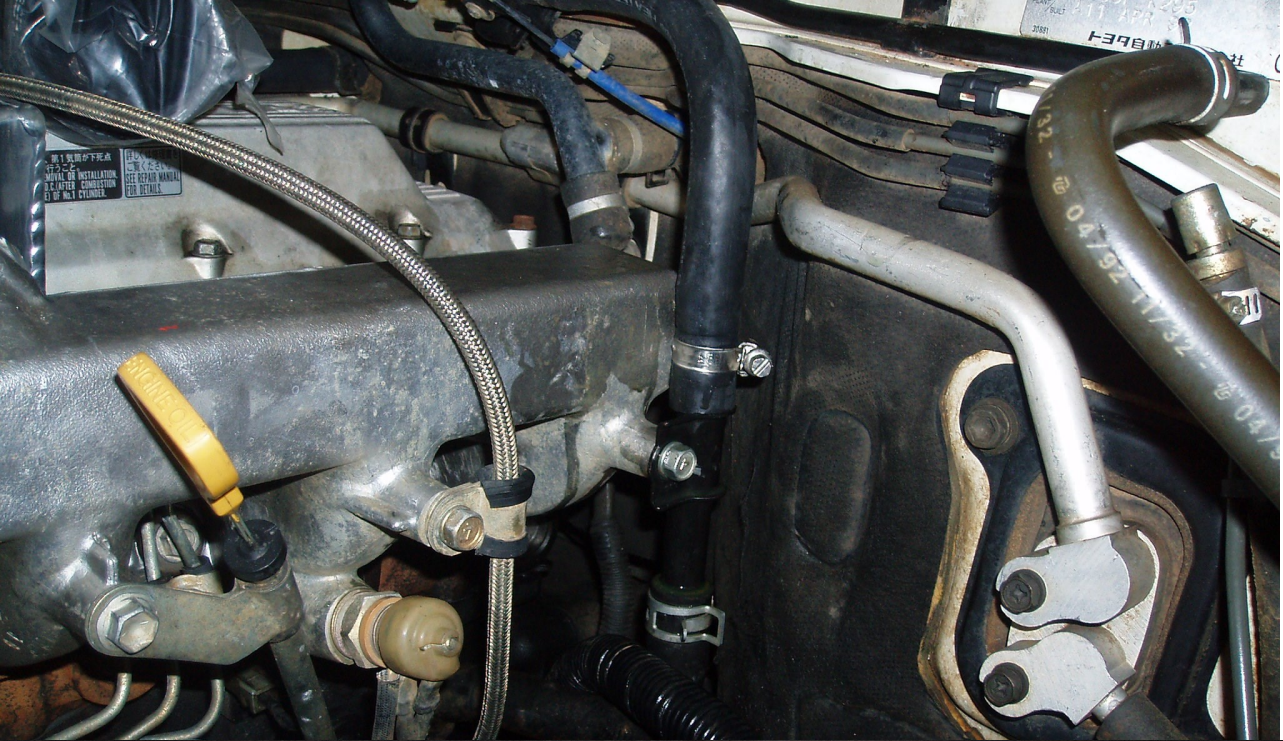
- Do not use this product in any other motor vehicle for which it is not designed.
- Do not use any other mounting location / method other than described in this instruction.
- It is advisable to seek assistance of another person when installing this product.
- Do not repair or modify this product and / or its mounting bracket in any way - repair or modification may affect proper operation of the vehicle or cause destruction of property.
- Be sure to clean and remove any loose debris before removing pipe work as debris entering the engine could be detrimental to the engine and or components

REMOVE BONNET SOUND DEADENING

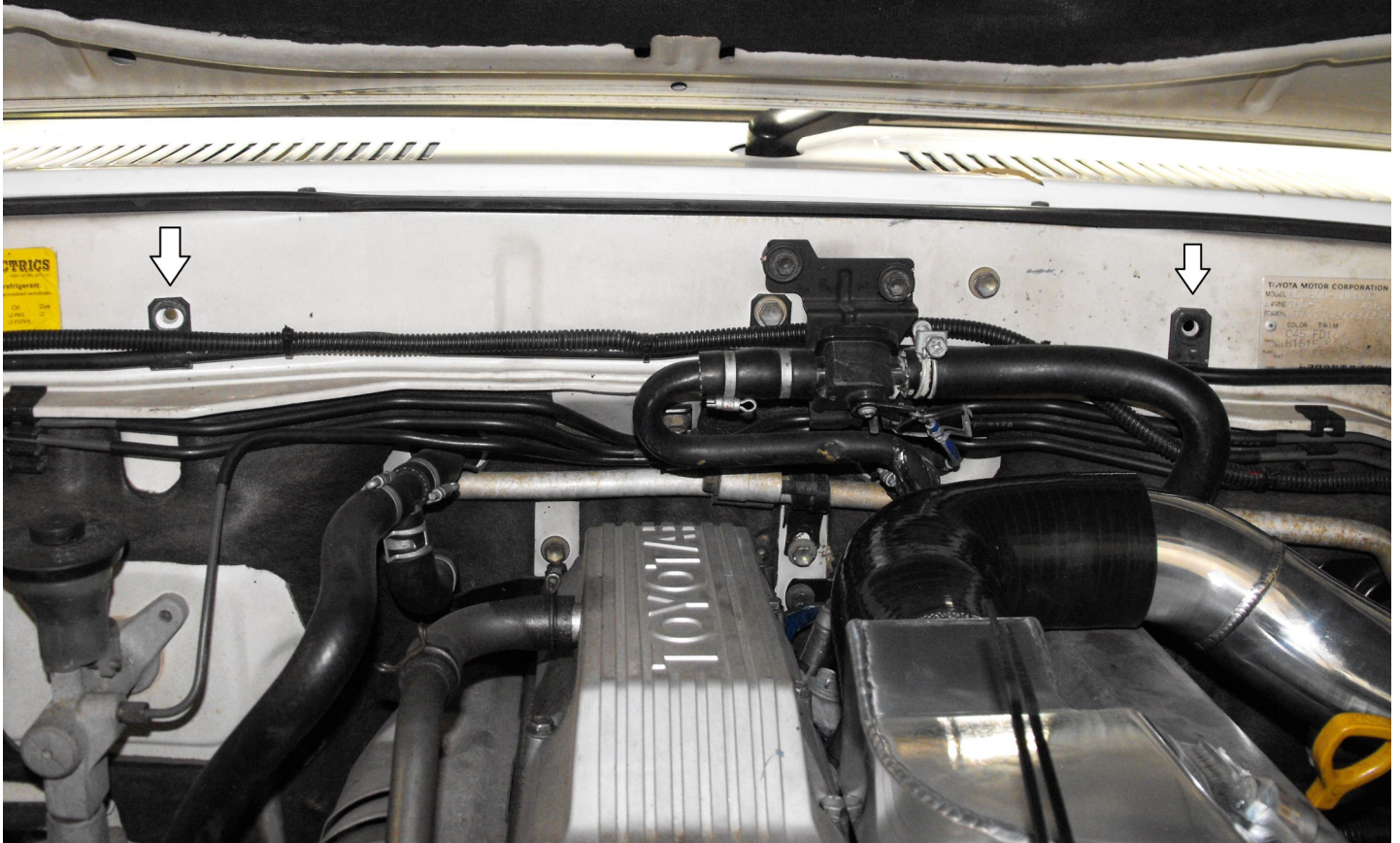
REMOVE FACTORY CROSSOVER PIPE AND THROTTLE CABLE BRACKET.

REMOVE BOLTS SHOWN ON THE FIREWALL

THE HEATER HOSE WILL NEED TO BE ROTATED TO ALLOW CLEARANCE TO THE PIEPWORK.

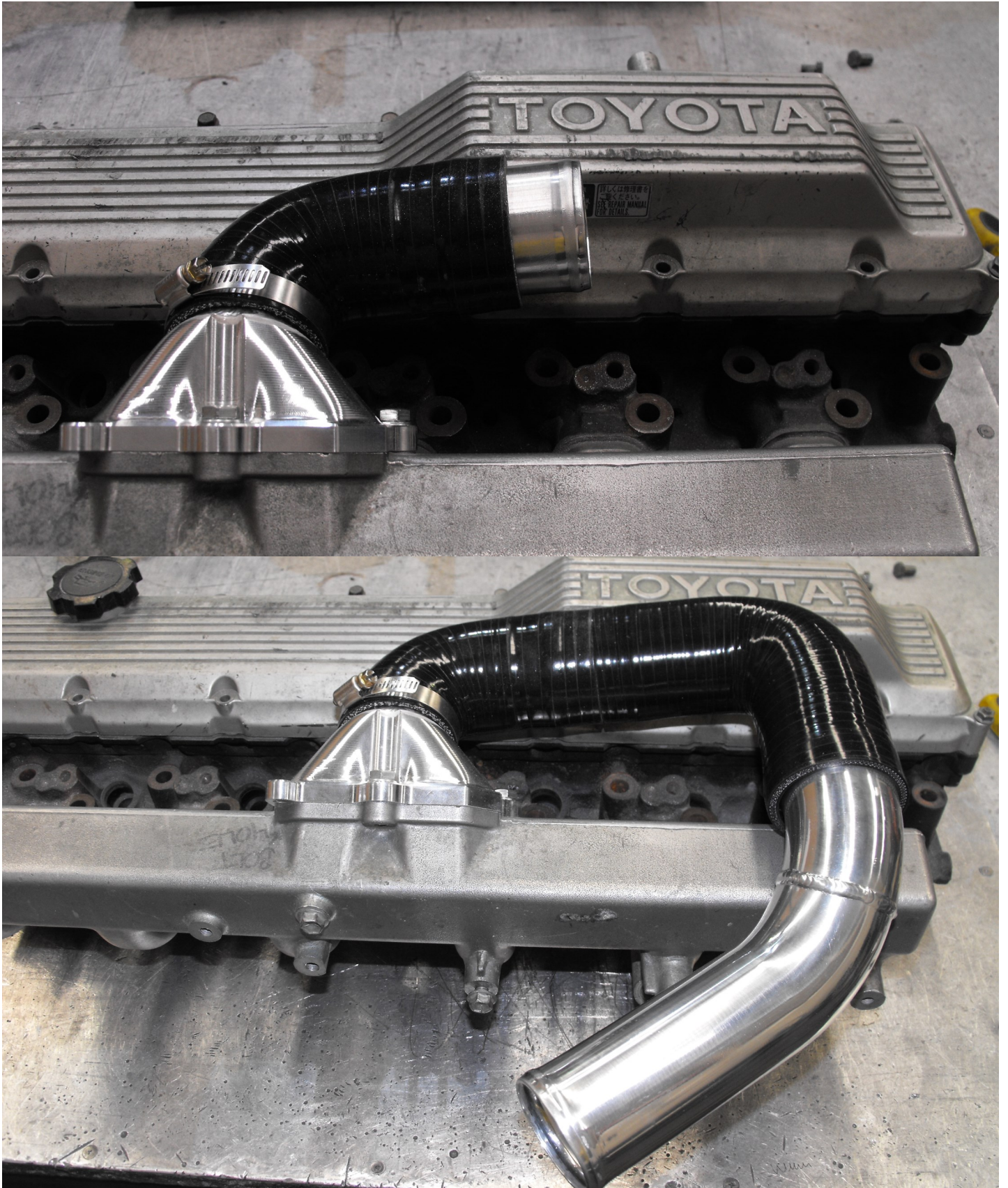


REMOVE BOLTS SHOWN FOR MOUNTING THE REAR OF THE INTERCOOLER FRAME TO THE FIREWALL. USE SUPPLIED M8X20 BOLTS WHEN INSTALLING INTERCOOLER.



CLEAN SURFACES AND INSTALL INLET ADAPTOR USING SILICONE SEALANT AND REBOLT THROTTLE CABLE BRACKET TO ADAPTOR. RUN THE VAC LINE FROM FITTING ON THE INLET ADAPTOR (NOT SHOWN) TO THE BOOST LINE T PIECE OR FUEL PUMP.

INSTALL PIPEWORK AS SHOWN. NOTE THIS MAY NEED TO BE TRIMMED.



SIT INTERCOOLER ON THE CAR USING THE FIREWALL MOUNTING POINTS SHOWN EARLIER. INSTALL WITH SUPPLIED M8 BOLTS. MARK THE 2 FRONT FRAME HOLES IN THE RADIATOR SUPPORT.

REMOVE THE INTERCOOLER AND DRILL THE FRONT HOLES. BEING CAREFUL TO NOT DRILL THE WIRING LOOM OR THE CONDENSOR BELOW.

INSTALL HOSE CLAMPS ON THE MANIFOLD PIPEWORK AND TIGHTEN MAKING SURE THEY WILL NOT TOUCH THE INTERCOOLER.

RE INSTALL THE INTERCOOLER AND TIGHTEN FRONT AND REAR WITH SUPPLIED BOLTS.

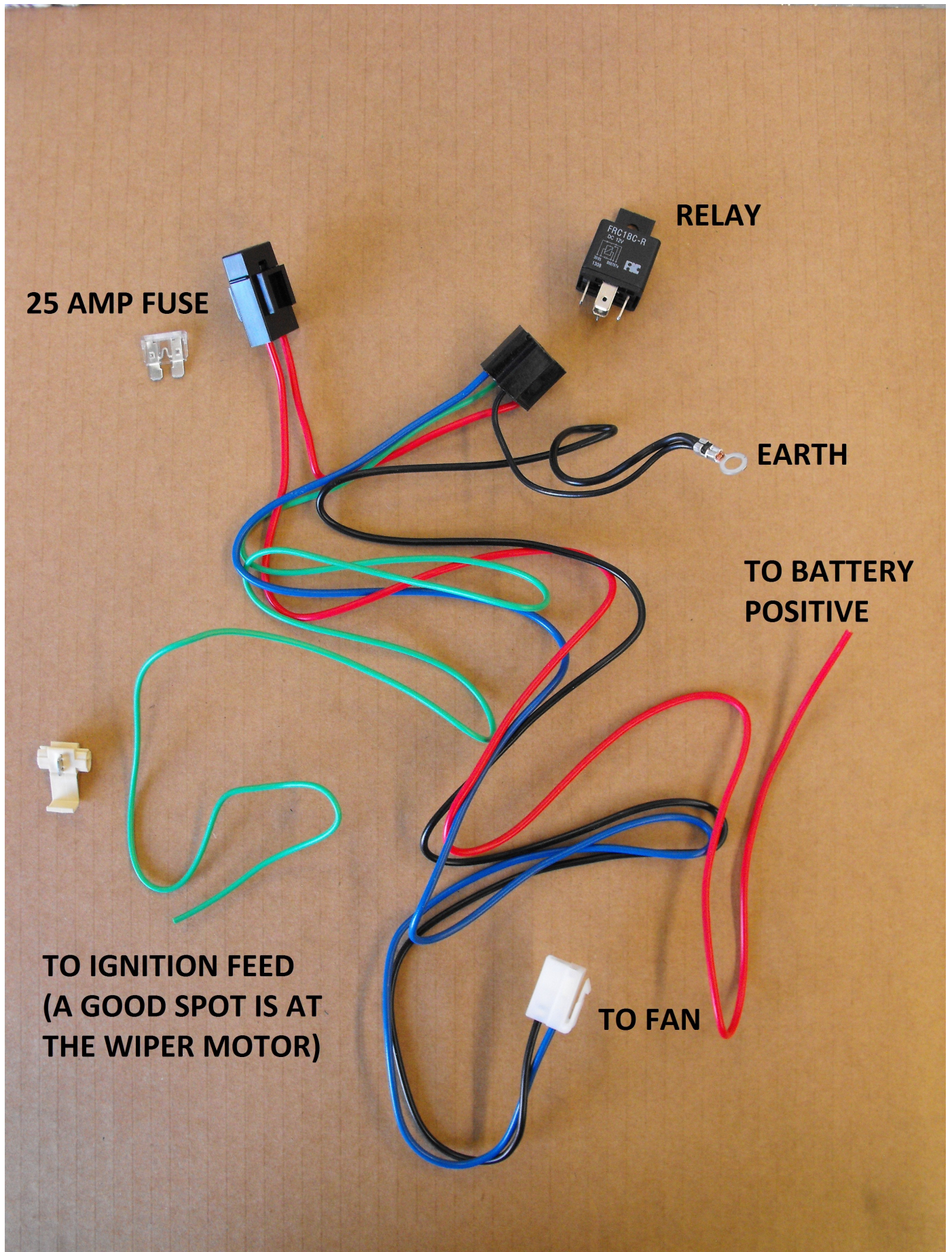


INSTALL MANIFOLD PIPEWORK AS SHOWN. THE SILICONE WILL NEED TO BE TRIMMED. ONCE INSTALLED TIGHTEN HOSE CLAMPS.

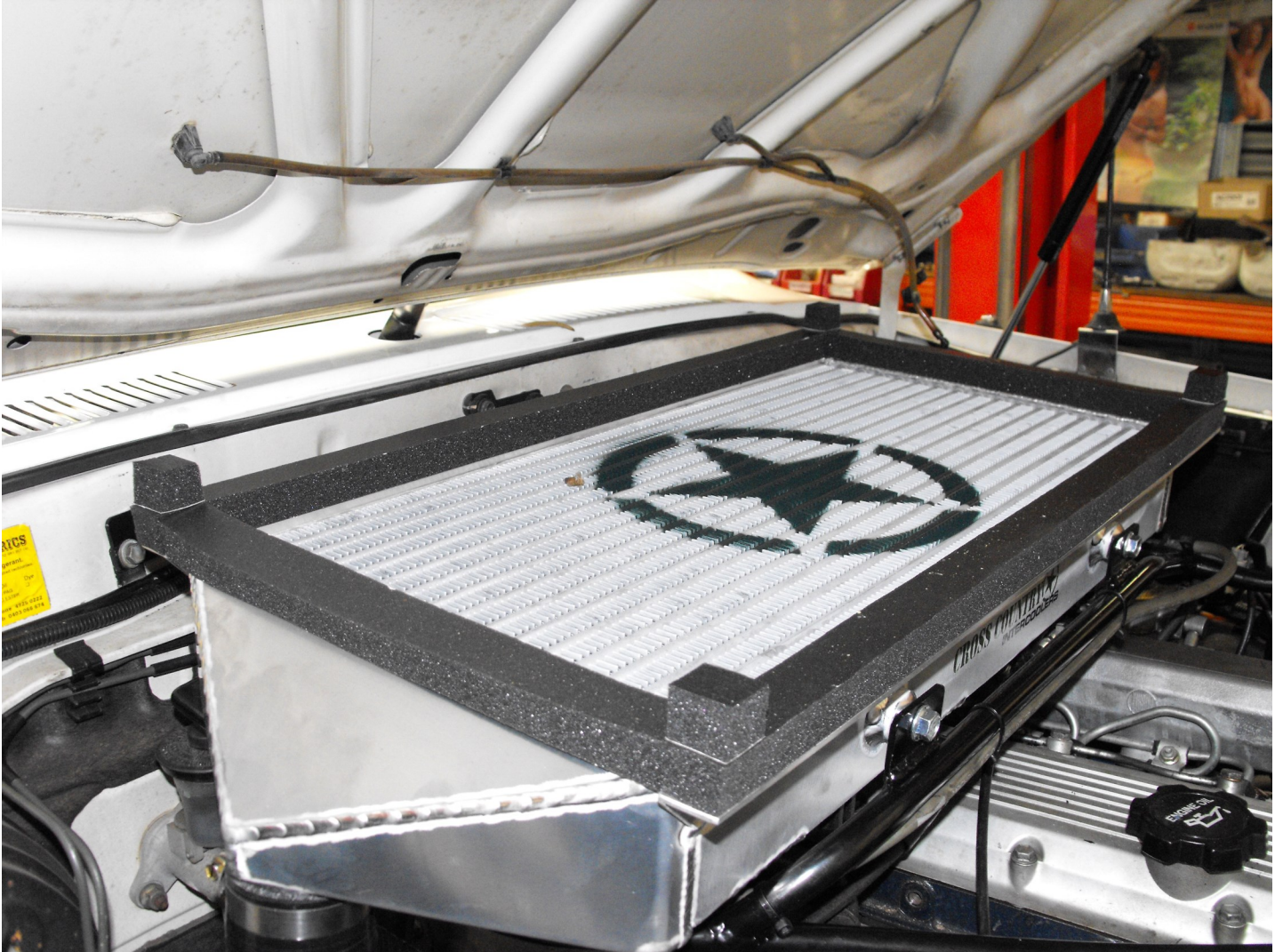
CLEAN TURBO OUTLET AND INSTALL SILICONES TO TURBO SIDE. THESE WILL NEED TO BE TRIMMED. ONCE TRIMMED TO FIT INSTALL USING ALUMINIUM JOINER AND TIGHTEN ALL HOSE CLAMPS.



INSTALL THE WIRING LOOM FOR THE FAN AS SHOWN.



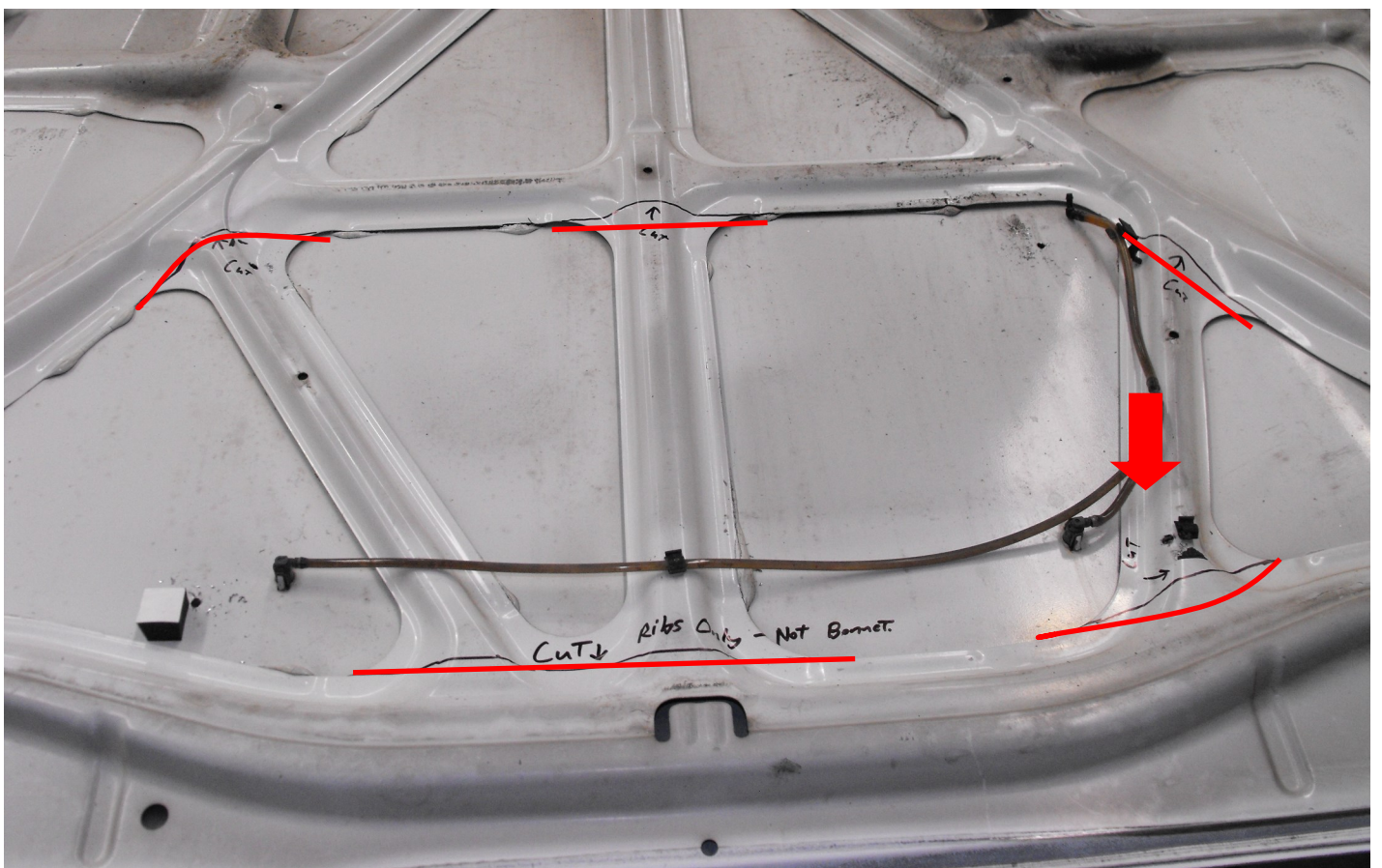
INSTALL FOAM SQUARES ON THE OUTSIDE EDGES OF THE INTERCOOLER AS SHOWN. GENTLY CLOSE THE BONNET SO THE FOAM SQUARES STICK TO THE INDERSIDE OF THE BONNET. REMOVE THE BONNET FROM THE VEHICLE. COMPARE THE PLACEMENT AND DIMENSIONS BETWEEN THE FOAM SQUARES TO THE INTERCOOLER.



FOLLOW THE INSTRUCTIONS SUPPLIED WITH THE SCOOP. SEE BELOW PICS FOR FURTHER INFORMATION



CUT WEBBING AS SHOWN BELOW. TAKING INTO ACCOUNT PART SHOWN BY ARROW.





THE WASHER JETS NEED TO BE MOVED OUTWARDS 50MM FROM THE SCOOP BOLT HOLES
IN LINE WITH ORIGINAL WASHER JETS



AFTER PAINTING AND INSTALLING THE SCOOP INSTALL THE WASHER JETS AND HOSE SUPPLIED.

REINSTALL THE BONNET AND ADJUST WASHER JETS

CHECK THE FAN IS WORKING AND CHECK ALL HOSE CLAMPS AND FASTENERS ARE TIGHT.

TEST DRIVE THE VEHICLE. AFTER A WEEK OF DRIVING RETIGHTEN THE HOSE CLAMPS AND CHECK AT REGULAR SERVICE INTERVALS.



IF THE INTERCOOLER IS REMOVED CLEAN PIPE OUTLETS AND INSIDE THE ENDS OF THE SILICONES WITH BRAKE CLEANER OR ACETONE BEFORE REINSTALLING.

